

Shaping the effortless laundry

Line 6000 Dryers



Work comfortably, dry more in less space



Space-saving

The new range **takes less than one square meter** of floor space, regardless of heating system (gas, electric, steam or heat pump).

The door that makes the difference:



Ideal height

The door is positioned at the most ergonomically **suitable height**. This makes a real difference for loading and unloading.



Sturdy and reliable

Because the door is **built to last**, it will optimize performance throughout the life of the dryer.



A better grip

Open and shut the door smoothly thanks to the handle design and easy-close magnetic door.



Safer for users

The insulated glass door* stays cool on the outside so there is **no risk of burned fingers or hands**. It also keeps the heat inside, so the room temperature is not affected.

*The insulated glass door and space saving are specific features of TD6-14 and TD6-20

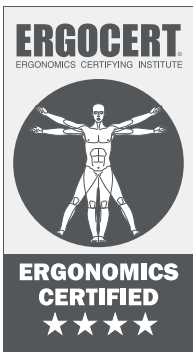
Our design is all about you



CompassPro, comes with a new design and improved user experience. **Flexible and customizable**, comes with preset programs as well as free programs slots. Up to 18 languages available.

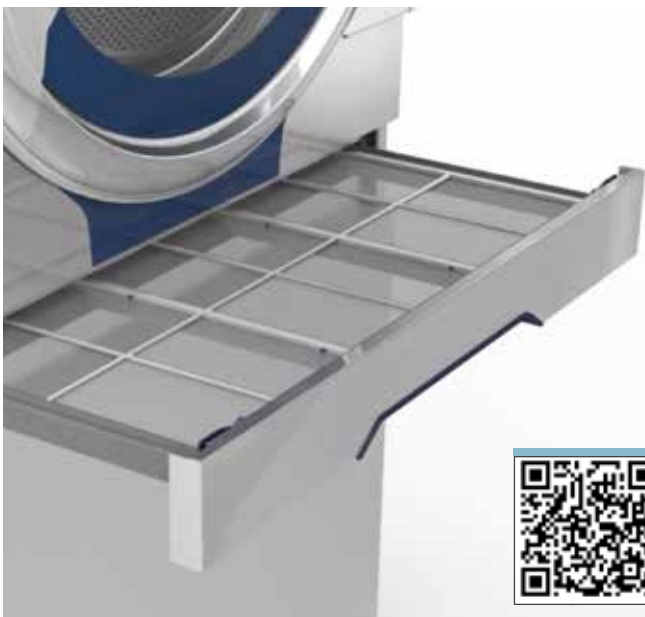
UNIQUE
in the industry

Pioneers in usability

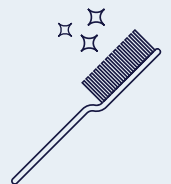


Ergonomic interventions can reduce work-related musculoskeletal disorders (WMSDs) by **59%**, with an average decrease of **75%** in sick days and a **25%** increase in productivity.

Washington State
Department of Labor & Industries



A filter drawer right where you need it



Maximum comfort

The horizontal filter drawer is positioned for **easy access and cleaning** without the need to bend down. Human-centered design down to the smallest details **takes the stress out of a physically demanding job.**

Watch the video and find out more!



Premium control. Day by day

Line 6000 is several laps ahead of other dryers in terms of energy savings and speed. This is good for the world around us and good for your bottom line. By investing heavily in **advanced technology**, we have achieved **outstanding drying times** while also reducing the dryer's life cycle costs.



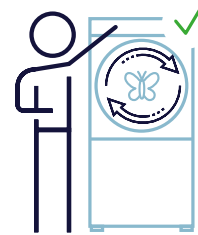
Dry not overdry

Moisture Balance measures the exact moisture level throughout the drying process. Protects garments and saves energy by stopping as soon as they are dry, or at the moisture level you set.



Best result with all fabrics

From delicate silk to heavy cotton: manually **adjusts the drum speed to control the mechanical action**. Garments will move correctly in the drum for the fastest drying.



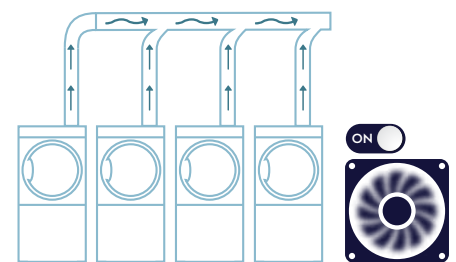
Available only for TD6-14 and TD6-20 models.



High performance, less noise

The **Adaptive Fan control*** **adjusts the fan speed automatically to save energy, reduce drying time, and provide an even drying result**.

It can also be used to reduce the noise level when needed, and makes it easier to install dryers in a challenging environment. Adaptive Fan turns on automatically, for example if filters are clogged or if ventilation ducts are too small. It also makes the fan last longer, to save you time and money.



100% air release

Available only for TD6-14 and TD6-20 models.

*The Adaptive Fan control is only available with the electric version.

Save more than

60%

on your energy
consumption

Thanks to
the Heat Pump
technology

No need for:

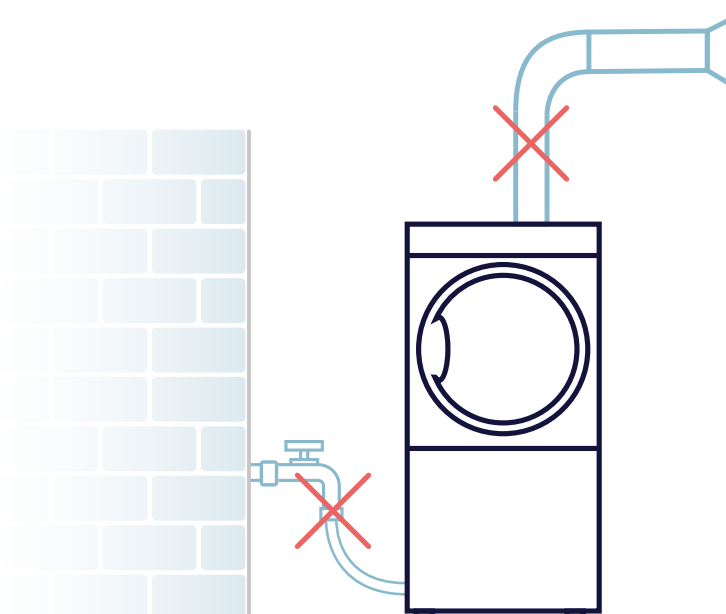
- exhaust
- water cooling system

The Heat Pump dryers can
operate in an ambient temperature
in between **+10/+45 °C**

Efficient in every way

The Heat Pump line is suitable for installation almost anywhere thanks to a small footprint and **plug & play capabilities**. This saves money on installation costs because there is no need for exhaust or a water cooling system.

For a tumble dryer with heat pump it is important to have good ventilation into the laundry room. Please contact an authorized ventilation technician for advice.



The OnE partner for your sustainable laundry

Electrolux Professional is **The OnE trusted partner** making your work-life easier, more profitable – and truly sustainable every day.

With **sustainability** at heart, we are leading the way in designing full and integrated solutions that deliver **high productivity, lowest life cycle costs**, and are the most **easy to use, to maintain and to service**.

Electrolux Professional is The OnE trusted partner for single and full solutions because the way we shape processes and solutions comes from human centric legacy and longstanding expertise in what makes your business more efficient.



Line 6000 Washers & Dryers

When you choose an Electrolux Professional solution, you are not just buying a machine. You are selecting a **comprehensive package of services and benefits**: technological innovation, certified ergonomics, guaranteed customer care services and cutting-edge connectivity.

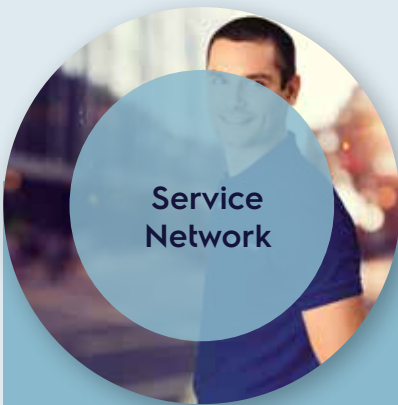




Essentia is the heart of superior Customer Care: a dedicated service of value that becomes foremost for your competitive advantage. We provide you the needed support, taking care of your processes with a reliable **service network**, a range of tailored-made exclusive **service agreements**, genuine **accessories and consumables** and an innovative technology.



Watch the video and find out more



Service Network

You can count on more than 2.200 authorized service partners, always available, always on duty. We stand ready and committed to support you with an unique service network that makes your work-life easier.



Service agreements

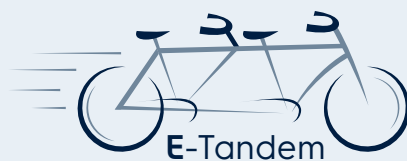
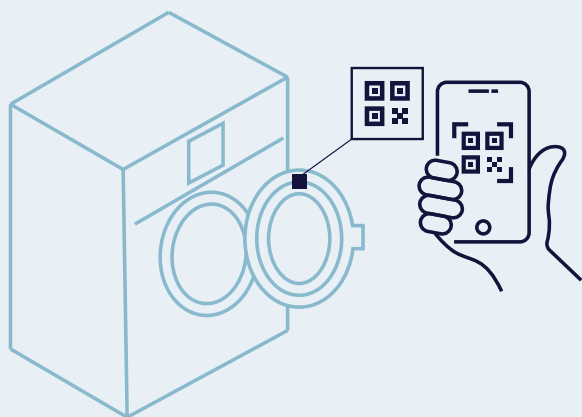
You can choose from flexible tailored made packages, according to your business needs, offering a variety of Products maintenance and support services.



Accessories & Consumables

You can rely on original **Accessories & Consumables**, rigorously tested by Electrolux Professional experts to ensure efficiency and durability of your equipment, together with the safety of the users.

Range overview



Let us ride with you

Are you looking for the user manual or do you need other support materials?

E-Tandem, the Electrolux Professional Digital Service will help you get immediate access to numerous tools.

Simply scan the **QR code** you can find inside the machine and start your ride.

Tumble Dryers

Line 6000



Experience
4-stars



Line 6000 range is powered by the Global Hygiene Advanced program package



to assure 99,9999% reduction of SARS-CoV-2 virus through the combination of washing and drying, or washing and ironing cycles. Deliver clean and disinfected linen in every laundry installation.

This efficacy is endorsed by RISE (The Research Institute of Sweden) on the basis of Electrolux Professional Laboratory data.



	TD6-6	TD6-7	TD6-10	TD6-10 HP	TD6-14	TD6-16
Drum volume (l)	130	135	190	190	255	290
Dry weight capacity (kg/lb)*	6/13	7/15	10.6/23	10.6/23	14/30	16.1/35.5
Width (mm-in)	597 - 23 1/2"	600 - 23 5/8"	720 - 28 3/8"	720 - 28 3/8"	790 - 31 1/8"	715 - 28 1/8"
Depth (mm-in)	725 - 28 9/16"	845 - 33 1/4" (el) 875 - 34 7/16" (gas)	765 - 30 1/8" (el) 805 - 31 1/16" (gas)	775 - 30 1/2"	965 - 38" (el/gas/HP) 1105 - 43 1/2" (steam)	1210 - 47 5/8"
Height (mm-in)	839 - 33"	1050 - 41 5/16"	1115 - 43 7/8"	1685 - 66 5/16"	1770 - 69 11/16"	1690 - 66 5/16"
Electric/Gas/Heat Pump/Steam	✓/X/X/X	✓/✓/✓/✓	✓/✓/✓/✓	X/X/✓/✓	✓/✓/✓/✓	✓/✓/ X/✓
Horizontal filter	X	●	●	●	●	●
Drum Speed control	X	X	X	X	○	X
Adaptive Fan control	X	X	X	X	○	X
Moisture Balance	X	○	○	○	○	○
Stainless steel drum	●	○	○	○	○	○
Galvanized steel drum	X	●	●	●	●	●
Compass Pro	●	●	●	●	●	●
Reversing drum	X	●	●	●	●	●
Ergonomics rating	★★★★	★★★★	★★★	★★★	★★★★	★★★

*Filling factor 1:18. Front and side panel in stainless steel as option.

● standard ○ optional ✓ available X not available ★ ergonomics certified

Wash & dry 60 kg per day in less than 0.4 m²!

The WH6-6 Washer and the TD6-7 Dryer are both full-featured professional models in a compact size. With their small footprint, they fit into challenging spaces, providing optimal results.

Stackable!

They can be stacked to save space. In this case, the control panel on the dryer is moved to the bottom so it stays within easy reach.





	TD6-17S	TD6-20	TD6-24S	TD6-30	TD6-37	TD6-45 TD6-45SLD	TD6-60 TD6-60SLD
Drum volume (l)	2x300	360	2x423	550	675	900	1200
Dry weight capacity (kg/lb)*	2x16.7/2x37	20/44	2x23.5/ 2x51.7	30.5/67.2	37.5/82.7	45 / 100	60 / 132
Width (mm-in)	790 - 31 1/2"	790 - 31 1/8"	870 - 34 1/4"	960 - 37 13/16"	960 - 37 13/16"	1290 - 50 25/32"	1290 - 50 25/32"
Depth (mm-in)	1115 - 43 7/8"	1202 - 47 5/16" (el/gas/HP) 1340-52 3/4" (steam)	1335 - 52 9/16"	1365 - 53 3/4"	1560 - 61 7/16"	1215 - 47 53/64"	1405 - 55 5/16"
Height (mm-in)	1940 - 67 11/16"	1770 - 69 11/16"	2085 - 82 1/16"	1855 - 73"	1855 - 73"	2465 - 97 3/64"	2465 - 97 3/64"
Electric/Gas/Heat Pump/Steam	✓/✓/✗/✗	✓/✓/✓/✓	✗/✓/✗/✗	✓/✓/✗/✓	✓/✓/✗/✓	✓/✓/✗/✓	✓/✓/✗/✓
Horizontal filter	●	●	●	●	●	✗	✗
Drum Speed control	✗	○	✗	✗	✗	●	●
Adaptive Fan control	✗	○	✗	✗	✗	✗	✗
Moisture Balance	○	○	✗	○	○	○	○
Stainless steel drum	○	○	○	○	○	○	○
Galvanized steel drum	●	●	●	●	●	●	●
Compass Pro®	●	●	●	●	●	●	●
Reversing Drum	●	●	●	●	●	●	●
Ergonomics rating	★★★	★★★★	★★★	★★	★★	★★★	★★★

*Filling factor 1:18. Front and side panel in stainless steel as option.

● standard ○ optional ✓ available ✗ not available ★ ergonomics certified

A wide range of Accessories & Consumables allows efficiency and best ergonomics:

Maintain a high standard drying experience with a periodic cleaning of your tumble dryers thanks to a fast and easy descaling process allowing the automatic residual moisture control to act efficiently and also ensuring to remove any eventual soap/softener that could remain.



Code 0S2394
C25 Rinse & Descale Tab

Code	Description	Part number
0W1XFY	Canvas Trolley RV-74 - 200 lt	0W1XX5 432730555
0W1Y2F	Stainless Steel Trolley BV-220 / BV-131lt	0W1Y2F 432730562
0W1Y2C	Bulk Transport Cart HV-52	0W1Y2C 432730558

- More information on product data sheet.
- Consult your Electrolux Professional contact regarding special Cleanroom constructions for Dryers.



Watch the video and find out more!

lagoon® Advanced Care



lagoon® Advanced Care: delicate on fabrics and gentle on the environment, is a game changer for the business of professional textile cleaning. lagoon® Advanced Care system makes it possible to operate wet cleaning with less process time, higher productivity and seamless handling of dry cleaning. Two detergents and a conditioner come as essential requirements to the results of the system. **Imagine... to be able to offer excellent cleaning results in a truly sustainable way.**



	TD6-7LAC	TD6-14LAC	TD6-20LAC	TD6-30LAC	TD6-37LAC
Drum volume (l)	135	255	360	550	675
Dry weight capacity (kg/lb)*	7 / 15	14 / 30	20 / 44	30.5 / 67.2	37.5 / 82.7
Width (mm-in)	600 - 23 5/8"	790 - 31 1/8"	790 - 31 1/8"	960 - 37 13/16"	960 - 37 13/16"
Depth (mm-in)	845 - 33 1/4" (el) 875 - 34 7/16" (gas)	965 - 38" (el/gas/HP) 1105 - 43 1/2" (steam)	1202 - 47 5/16" (el/gas/HP) 1340 - 52 3/8" (steam)	1365 - 53 3/4"	1560 - 61 7/16"
Height (mm-in)	1050 - 41 5/16"	1770 - 69 11/16"	1770 - 69 11/16"	1855 - 73"	1855 - 73"
Electric/Gas/Heat Pump/Steam	✓/✓/✓/✗	✓/✓/✓/✓	✓/✓/✓/✓	✓/✓/✗/✓	✓/✓/✗/✓
Horizontal filter	●	●	●	●	●
Drum Speed control	✗	○	○	✗	✗
Adaptive Fan control*	✗	○	○	✗	✗
Moisture Balance	●	●	●	●	●
Stainless steel drum	●	●	●	●	●
Galvanized steel drum	✗	✗	✗	✗	✗
Compass Pro®	●	●	●	●	●
Reversing Drum	●	●	●	●	●
Double glass door	●	●	●	✗	✗
Ergonomics rating	★★★★	★★★★	★★★★	★★	★★

● standard ○ optional ✓ available ✗ not available ★ ergonomics certified * On EI models only



Excellence is central to everything we do. By anticipating our customers' needs, we strive for Excellence with our people, innovations, solutions and services. To be The OnE making our customers' work-life easier, more profitable – and truly sustainable every day.

Follow us on



www.electroluxprofessional.com

Scan the cover to see Line 6000 in **augmented reality**



Excellence with the environment in mind

- ▶ All our factories are ISO 14001-certified
- ▶ All our solutions are designed for low consumption of water, energy, detergents and harmful emissions
- ▶ In recent years over 70% of our product features have been updated with the environmental needs of our customers in mind
- ▶ Our technology is RoHS and REACH compliant and over 95% recyclable
- ▶ Our products are 100% quality tested by experts

