



Where sustainability meets performances

Heat Pump Dryers

Heat Pump Dryers



A revolutionary dryer

Line 6000 Heat Pump Dryers provides outstanding results with easy installation, low running costs and positive impact on the environment



Energy Savings

Save up to 65% in energy compared to a traditional vented machine, enjoy in easy installation process and a quick return on investment



Environmental Impact

Proudly reduce greenhouse gas emissions by 33%* in kg CO₂ per drying cycle and contribute to the emissions reductions
*will vary from country to country



High Productivity

Features like the Moisture Balance, guarantee that the dryer stops as soon as the garments are dry, with no waste of productive time



Easy Installation

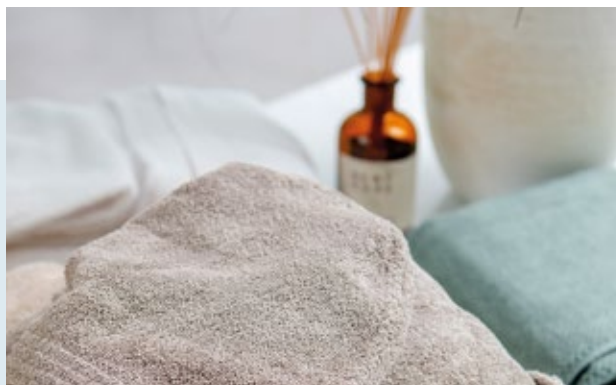
The Heat Pump line is suitable for installation almost anywhere thanks to a small footprint and plug&play capabilities

Electrolux Professional technology

Our Heat Pump Dryers features patented technologies which enhance productivity and energy efficiency:

- Inverter-driven compressor which allows quickly reaching the right temperature and reducing the duration of the cycle*
- Electronic valve significantly reduces temperature fluctuations versus traditional mechanical valve regulation, resulting in better temperature control and faster dewatering.*

**Patented JP7216728B2 and related family"



Your efficient & sustainable choice

Avoid micro lint pollution

No micro lint release into the fresh air, complying to regulations against micro lint release outside buildings.

Less impact on the environment

It reduces greenhouse gas emission by 33%* in kg CO₂ per drying cycle.

Silent operations

Line 6000 heat pump dryers work with only 56dB, almost in complete silence, perfect for shared laundries.



Raise your productivity while saving

Energy prices have been constantly rising, Line 6000 Heat Pump Dryers provides high number of cycles while having a substantial saving in energy.



More Cycles in less time: more success!

Professionals have access to a heat pump dryer that can run a cycle in 35 mins – just 5 minutes longer than a vented dryer, and nearly twice as fast as traditional heat pump dryers.

Better than regular dryer: consume just as a washer

Dryers normally consume 3x as much energy as a washer*, this gap now is reduced, getting the amount of energy used from the heat pump dryers close to the washers.



Save on utility costs, **65%** in energy consumption annually

The equivalent annual energy usage of three traditional family homes.*

*Based on TD6-20 heat pump dryer model



=



Exploring the range

Our Line 6000 Heat Pump Dryers range will amaze you with its life cycle costs reduction, energy savings and outstanding drying times.



TD6-7 HP



TD6-10 HP

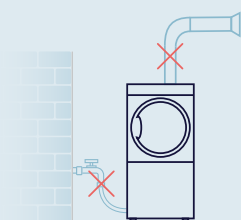


TD6-14 HP



TD6-20 HP

	TD6-7 HP	TD6-10 HP	TD6-14 HP	TD6-20 HP
Drum volume (l)	135	190	255	360
Dry weight capacity (kg/lb)	7/15	10.6 / 23	14/30	20/44
Width (mm-in)	600 - 23 5/8"	720 - 28 3/8"	790 - 31 1/8"	790 - 31 1/8"
Depth (mm-in)	845 - 33 1/4"	775 - 30 1/2"	965 - 38"	1202 - 47 5/16"
Height (mm-in)	1050 - 41 5/16"	1685 - 66 5/16"	1770 - 69 11/16"	1770 - 69 11/16"
Horizontal Filter	Standard	Standard	Standard	Standard
Drum Speed Control	X	X	Optional	Optional
Water Cooling	X	Standard	X	X
Moisture Balance	Optional	Optional	Optional	Optional
Stainless Steel Drum	Optional	Optional	Optional	Optional
Galvanized Steel Drum	Standard	Standard	Standard	Standard
Compass Pro	Standard	Standard	Standard	Standard
Reversing Drum	Standard	Standard	Standard	Standard
Ergonomics rating	★★★★	★★★	★★★★	★★★★



Plug and play

Electrolux Professional Line 6000 heat pump tumblers can be installed anywhere. There is no need for exhaust ducts water cooling.

Hence, save money on installation costs!

The Heat Pump dryers can operate in an ambient temperature in between +10/+45° C

For a tumble dryer with heat pump it is important to have good ventilation into the laundry room. Please contact an authorized ventilation technician for advice.

Moisture Balance

Dry not overdry

Moisture Balance measures the exact moisture level throughout the drying process. Protects garments and saves energy by stopping as soon as they are dry, or at the moisture level you set

Drum Speed

Best result with all fabrics

From delicate silk to heavy cotton, you can ensure that garments move correctly in the drum to ensure the fastest drying possible while respecting every type of garment

Best-in-class for all your needs

Line 6000 Heat Pump Dryers is a sustainable opportunity for your business to maintain high productivity level while saving money and energy.



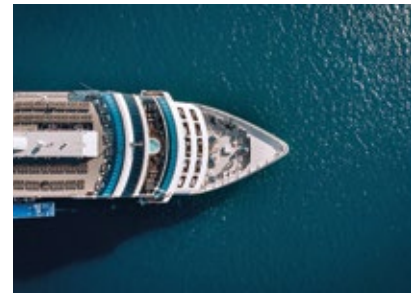
Multi-Housing Laundry

When tenants do their laundry, they want a fast and trouble-free experience. What turns a chore into a pleasure is the assurance that they will get dried to perfection. Run a sustainable laundry room and save on energy costs. Keep your tenants happy by providing a fast and user-friendly experience.



On Premises Laundries

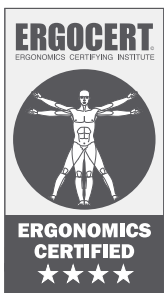
Get things clean and dried on your schedule and in the convenience of your own premises. Reliability, low maintenance and low costs mean you can concentrate on the rest of your job. Clean tough stains without the wait and expect total hygiene with long-lasting machines.



Marine

Cargo ships, oil rigs, passenger ships and other marine vessels need to rely on high-performance laundry equipment that's flexible, cost effective, and easy to maintain. Get clothing and textiles clean and dry in a difficult environment and handle all fabrics, from delicates to rugged apparel.

Pioneers in usability



Ergonomic interventions can reduce work-related musculoskeletal disorders (WMSDs) by **59%**, with an average decrease of **75%** in sick days and a **25%** increase in productivity.

UNIQUE
in the industry



Everything under your control with COMPASSPRO

CompassPro comes with a new design and improved user experience. Flexible and customizable, comes with preset programs as well as free programs slots. Up to 18 languages available.



Excellence is central to everything we do.
By anticipating our customers' needs, we strive for
Excellence with our people, innovations, solutions and services.
To be the OnE making our customers' work-life easier,
more profitable – and truly sustainable every day.

Follow us on



www.electroluxprofessional.com

Excellence with the environment in mind

- ▶ All our factories are ISO 14001-certified
- ▶ All our solutions are designed for low consumption of water, energy, detergents and harmful emissions
- ▶ In recent years over 70% of our product features have been updated with the environmental needs of our customers in mind
- ▶ Our technology is RoHS and REACH compliant and over 95% recyclable
- ▶ Our products are 100% quality tested by experts

