

Instruction for installation CMIS card

**WP4700H – WP4900H – WP41100H
WPB4700H – WPB4900H – WPB41100H**



The mechanical and electrical installation of the machine should only be done by qualified personnel.

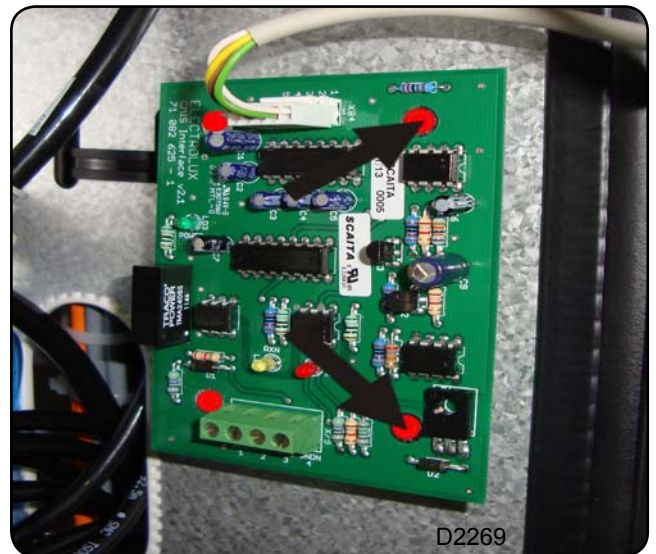
Thinking of you
 **Electrolux**

Action on the machine

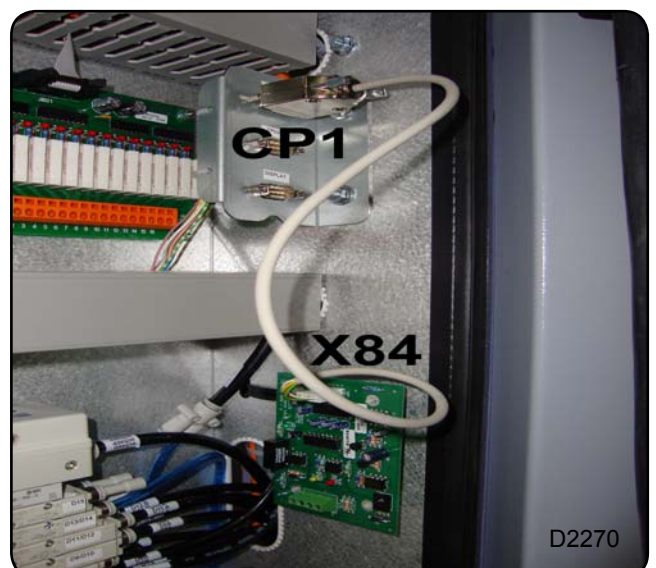
- A connecting cable **A** (no. 3115086) CP1 / X84
- Kit (no. 988916257) is supplied with a set of spare parts including :
 - 1 CMIS Machine Interface
 - 1 Stuffing box
 - 4 Plastic spacers
 - 1 Connecting cable to CMIS Interface / Machine

- 1 Switch off the machine with the main switch.
- 2 Remove the side panel of protection of the switch cabinet

- 3 Mount the four plastic spacers on the support of the In/Out card of the machine or on the CMIS card support plate (place this plate near the In/Out card).
- 4 Mount the CMIS card on the four plastic spacers.



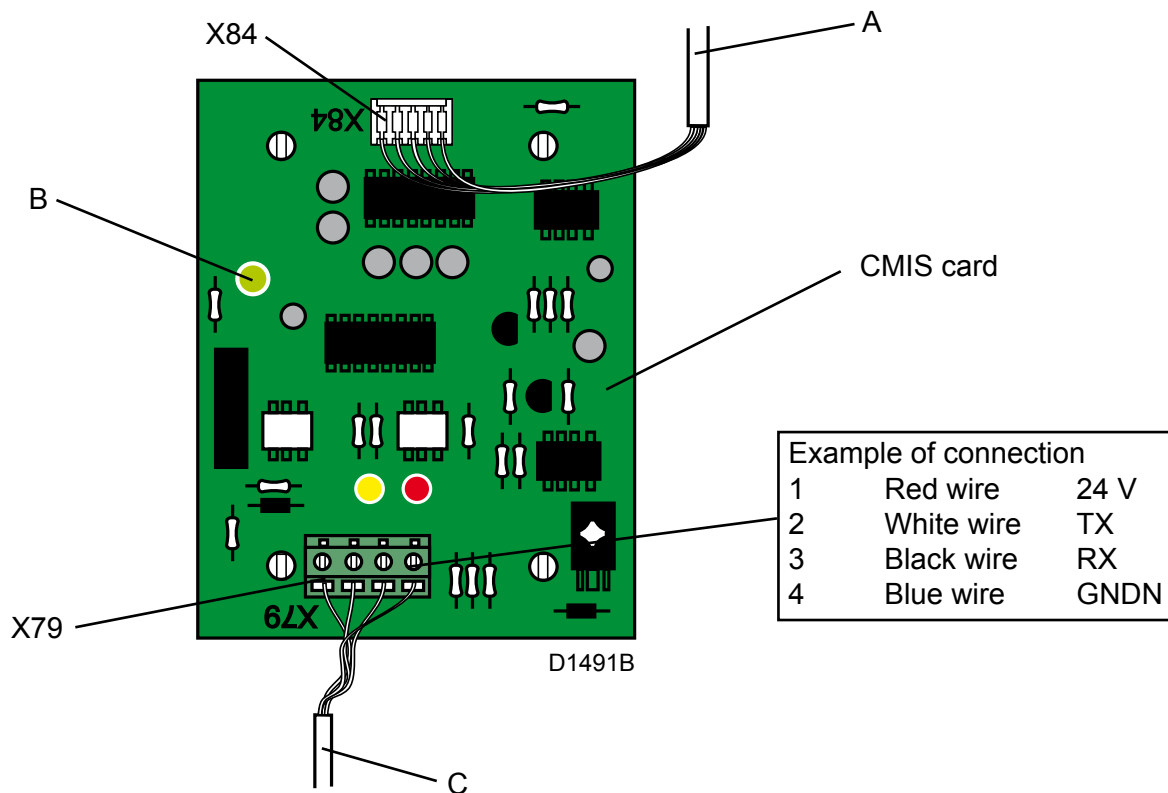
- 5 Connect the plug of Network cable **A** to terminal X84 of the CMIS Machine Interface.
Connect DB9 male plug to the CP1 female plug in the electric cabinet.



Installation

4

- 6 Connect the wire-network cable **C** (4 x 0.22 mm²) from CMIS Interface PC to terminal X79 of the machine card.



- 7 Mount the grommet in the hole Ø 16 on the top of the machine. Pass the wire-network cable **C** (4 x 0.22 mm²) in this grommet.

Note that terminals 1, 2, 3, 4 on the CMIS Machine Interface should be connected to corresponding terminals 1, 2, 3, 4 on CMIS Interface PC. Wire should NOT be twisted.

When the network is powered-up, the green LED **B** should light up.

For connecting and configuring, see separate manual "Installation manual CMIS".



D0926



www.electrolux.com/laundrysystems

Share more of our thinking at www.electrolux.com