

# Washer extractor

## H7-55

### Features and benefits

- **Intelligent control offers:**
  - Large display and one control knob for easy program selection
  - Language selection
  - Quick selection and option buttons for the most frequently used wash programs and options
  - Wash program packages optimized on Economy, Performance and Time. (Available on general programs)
- Extremely low water and energy consumption – see table below
- Four compartment detergent box for manual dosing of powder or liquid detergent
- High extraction force for efficient dewatering
- Door with gasket and strong hinges built for heavy duty operation
- Stainless and galvanized steel in all vital parts for high degree of rust protection



Images shown are a representation of the product only and variations may occur.

### Main options

- Automatic liquid detergent supply (optional I/O board)
- Connection to booking- /payment- system or coin meter
- Drain pump
- Stacking kit to install tumble dryer D7-130 on top to save space

Main specifications				H7-55	
Max. capacity	filling factor 1:9	kg/lb		6/13	
Drum,	volume	litre		53	
	diameter	ø mm		452	
Extraction		rpm		1450	
G-factor				530	
Heating alternatives, 230/400V	electricity	kW		2.2 / 2.8 / 4.4	
	non-heated			x	
<b>Consumption data "Normal 60°C"</b>					
<b>Economy*</b>					
Total time		min		Full load, 6 kg	Half load, 3 kg
Water consumption (cold+hot)		litre		49	46
Energy consumption (motor/heating/hot water)		kWh		38+10	18+5
Residual moisture		%		0.2/0.2/0.6	0.2/0.1/0.3
				46	48

\* Water temperature 15°C cold water and 65°C hot water.

Produced according to ISO 9001 and ISO 14001.

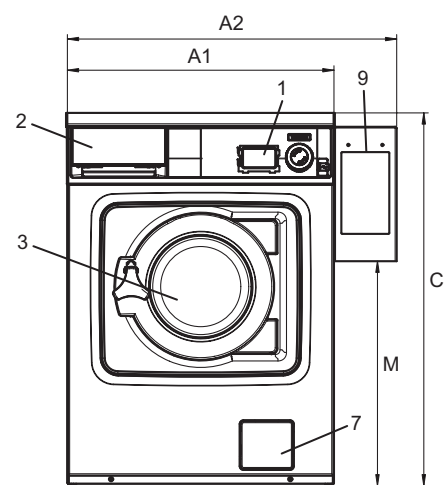
Certified with CB certificate for Low Voltage Directive and S-mark according to the Machinery Directive. Protection class IP X4D.

Electrical connections					
Heating alternative	Main voltage		Heating power	Total power	Recommended fuse
		Hz	kW	kW	A
Electric heated	220-240V 1N ~	50/60	2.2/2.8	2.4/3.0	16
	220-240V 1N ~	50/60	4.4	4.6	20
	220-230V 1N ~	50/60	4.4	4.6	25
	220-240V 3 ~	50/60	4.4	4.6	16
	220-230V 3 ~	50/60	4.4	4.6	20
	380-415V 3N ~	50/60	4.4	4.6	10
	380-415V 3 ~	50/60	3.6	3.8	10
	440V/480V 3 ~	60	4.0/4.4	4.3/4.7	10
Non heated	110-480V 1/3 ~	50/60	-	0.5	10

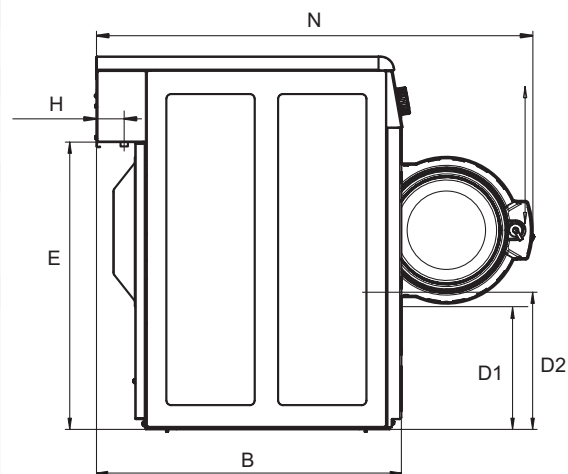
Water connections		H7-55
Water valves	DN	20
Water pressure	kPa	200-500
Capacity at 300 kPa	l/min	17
Drain valve	ø mm	50
Draining capacity	l/min	160
Liquid detergent supplies		5
Floor requirements		
Frequency of the dynamic force	Hz	24.2
Floor load at max extraction	kN	1.02 ± 0.3
Sound levels		
Sound power/pressure level at extraction*	dB(A)	70/56
Sound power/pressure level at wash*	dB(A)	56/42
Heat emission		
% of installed power, max		5
Shipping data**		
Shipping volume	net, kg crated, m <sup>3</sup>	100 0.46
Accessories		
Stainless steel fluff collector		x
Stacking kit with tumble dryer		x
Steel base		x
Dimensions in mm		
<b>A1</b> Width		595
<b>A2</b> Width		735
<b>B</b> Depth		681
<b>C</b> Height		832
<b>D1</b>		284
<b>D2</b>		310
<b>E</b>		641
<b>F</b>		84
<b>G</b>		194
<b>H</b>		48
<b>I</b>		65
<b>J</b>		78
<b>K</b>		120
<b>L</b>		119
<b>M</b>		501
<b>N</b>		974
<b>O</b>		764
<b>1</b> Operating panel	<b>6</b> Drain valve	
<b>2</b> Detergent box	<b>7</b> Drain pump	
<b>3</b> Door opening ø 255 mm	<b>8</b> Electrical connection	
<b>4</b> Cold water	<b>9</b> Payment system	
<b>5</b> Hot water		

\* Sound power levels measured according to ISO 60704.

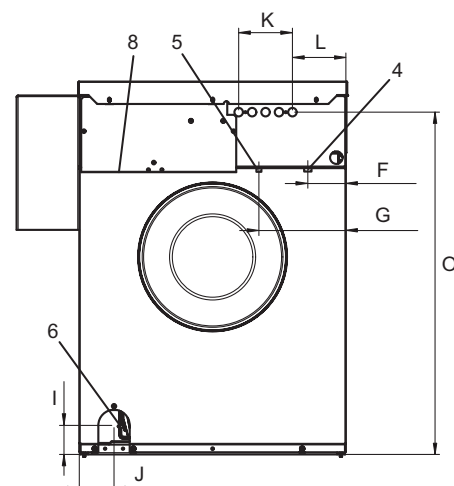
\*\* Average data. Crated weight/shipping volume depends on configuration. Please contact logistics for exact measures.



Front



Side view



Rear