

Industrial ironers

IC64821, IC64825, IC64832



4 stars Ergonomic Certification



Certified ergonomics

Reducing workload, easing stress, intuitive and user friendly



Outstanding productivity

Brilliant results with optimised staffing costs maintaining strict standards of hygiene



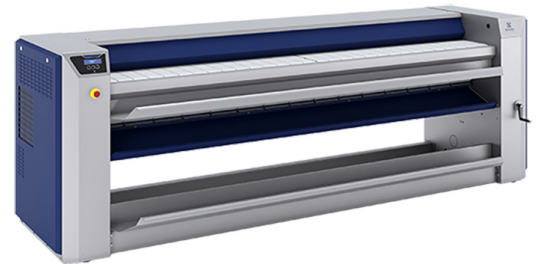
Full flexibility

Multiple solutions designed for your specific needs



Tried & tested durability

Guaranteeing consistent results without interruption



Images shown are a representation of the product only and variations may occur.

| OPTIONS & AREA CONCERNED BY THE OPTIONS | | Active | Performance | Superior |
|--|--|--------|-------------|----------|
| Basic Model - Electric and Gas heated | | | | |
| Manual Feeding: | | | | |
| Feed Alone + Vacuum Table | Stop the feeding table (while you are still ironing) to feed alone large item | No | No | Yes |
| Vacuum Table | To optimise the feeding and by consequence the ironing quality | No | Yes | No |
| Folding: | | | | |
| Antistatic Bar | To avoid polyester to stick on the cylinder | No | No | No |
| Productivity: | | | | |
| Feed Now | To inform operator when and which area the ironer cylinder is ready to iron | Yes | No | No |
| Dubixium | Keep the cylinder temperature always uniform and optimise the productivity | No | Yes | Yes |
| DIAMMS | Operates automatically at optimum speed whilst perfectly managing the moisture in your laundry | No | No | No |

| OPTIONS & AREA CONCERNED BY THE OPTIONS | | Active | Performance | Superior |
|---|--|--------|-------------|----------|
| Basic Model - Steam heated | | | | |
| Manual Feeding: | | | | |
| Feed Alone + Vacuum Table | Stop the feeding table (while you are still ironing) to feed alone large item | No | No | Yes |
| Vacuum Table | To optimise the feeding and by consequence the ironing quality | No | Yes | No |
| Folding: | | | | |
| Antistatic Bar | To avoid polyester to stick on the cylinder | No | No | No |
| Productivity: | | | | |
| DIAMMS | Operates automatically at optimum speed whilst perfectly managing the moisture in your laundry | No | No | No |

| Main specifications | | IC64821 | IC64825 | IC64832 |
|---|------------|--------------|--------------|--------------|
| Capacity, max. water evaporation, el / steam / gas ¹ | l/h | 40 / 63 / 37 | 48 / 75 / 46 | 59 / 93 / 59 |
| Cylinder, diameter, el & gas / steam | ø mm | 479 / 457 | 479 / 457 | 479 / 457 |
| Cylinder, length | mm | 2120 | 2540 | 3170 |
| Ironing speed | m/min | 1.5-9 | 1.5-9 | 1.5-9 |
| Heating, electricity | kW | 37 | 44 | 54 |
| Heating, steam (900 kPa) | kg/h | 92 | 110 | 141 |
| Heating, gas | Btu/h (kW) | 150100 (44) | 177400 (52) | 221800 (65) |

1. 50% residual moisture content cotton 180g/m² and 100% cylinder use (ISO 9398-1).

| Electrical connections ¹ | | IC64821 | IC64825 | IC64832 |
|-------------------------------------|-------|---------|---------|----------|
| Electric heated: | | | | |
| 400-415V 3AC 50/60 Hz | kW(A) | 38 (63) | 45 (80) | 56 (100) |
| Gas heated: | | | | |
| 208-240V 3AC 60 Hz | kW(A) | 2 (16) | 2 (16) | 2 (16) |
| Steam heated: | | | | |
| 400V 3 AC 50/60 Hz | kW(A) | 2 (16) | 2 (16) | 2 (16) |

1. Other voltages available, see installation manual.

| Steam, gas and air connections | | IC64821 | IC64825 | IC64832 |
|-------------------------------------|-------------------|-------------|-------------|-------------|
| Steam | DN | 20 | 20 | 20 |
| Rec. steam pressure | kPa | 900 | 900 | 900 |
| Condensate | DN | 10 | 10 | 10 |
| Gas | DN | 20 | 20 | 20 |
| Gas pressure, natural gas (G20/G25) | Pa | 2000 / 2500 | 2000 / 2500 | 2000 / 2500 |
| Gas pressure, propane (G31) | Pa | 3700 / 5000 | 3700 / 5000 | 3700 / 5000 |
| Air outlet | ∅ mm | 150 | 150 | 150 |
| Evacuated air, gas | m ³ /h | 830 | 950 | 1010 |
| Evacuated air, el, steam | m ³ /h | 740 | 880 | 960 |
| Pressure drop | max. Pa | 200 | 200 | 200 |
| Sound levels | | | | |
| Airborne sound level | dB(A) | 73 | 73 | 73 |
| Heat emission | | | | |
| % of installed power, max | | 3 | 3 | 3 |
| Shipping data¹ | | | | |
| Weight | net, kg | 950 | 1120 | 1295 |
| Shipping volume | m ³ | 5.63 | 6.43 | 7.64 |

1. Average data. Crated weight/shipping volume depends on configuration. Please contact logistics for exact measures.

| Dimensions in mm | IC64821 | IC64825 | IC64832 |
|---|---------|---------|---------|
| A Overall width | 2785 | 3205 | 3835 |
| B Ironing width | 2120 | 2540 | 3170 |
| 1. Control panel 2. Exhaust connection 3. Steam connection 4. Condensate connection 5. Electrical connection 6. Gas connection | | | |

