

# Washer extractor

## H7-180

### Features and benefits

- **Intelligent controller offers:**
  - Large display and one control knob for easy program selection
  - Language selection
  - Create new programs in your PC with the Laundry Program Manager, then transfer them to machines via USB port
  - Wash program packages optimized on Economy, Performance and Time. (Available on general programs)
- Low water and energy consumption – see table below
- Four compartment detergent box for manual dosing of powder or liquid detergent
- High extraction force for efficient dewatering
- Door with gasket and strong hinges built for heavy duty operation
- Stainless and galvanized steel in all vital parts for high degree of rust protection
- **Proven robustness:**
  - Maximises the extraction force, leading to highest dewatering and savings in drying
  - Minimizes the stress on the machine, leading to trouble-free operation and increased machine lifetime
  - Reduces vibrations, making it possible to install the machine in all locations



Images shown are a representation of the product only and variations may occur.

### Main options

- Automatic liquid detergent supply (optional I/O board)
- Connection to booking- /payment- system or coin meter

| Main specifications                                     |                    |       |             | H7-180 |         |
|---|--------------------|-------|-------------|--------|---------|
| Max. capacity   | filling factor 1:9 | kg/lb |             | 20/45  |         |
| Drum, volume  |                    | litre |             | 180    |         |
|   | diameter           | ø mm  |             | 725    |         |
| Extraction  |                    | rpm   |             | 1055   |         |
| G-factor  |                    |       |             | 400    |         |
| Standard heating alternatives                           | electricity        | kW    |             | 18.0   |         |
|   | steam              |       |             | x      |         |
|   | non-heated         |       |             | x      |         |
| <b>Consumption data "Normal 60°C" Economy*</b>          |                    |       |             | EI     | Steam** |
| Total time  |                    | min   | 46          | 46     |         |
| Water consumption (cold+hot)                            |                    | litre | 128+31      | 159+0  |         |
| Energy consumption (motor/heating/hot water)            |                    | kWh   | 0.5/0.9/2.0 | 0.5/-  |         |
| Steam consumption                                       |                    | kg    | -           | 4.35   |         |
| * Water temperature 15°C cold water and 65°C hot water. |                    |       |             |        |         |
| ** Depending on steam pressure.                         |                    |       |             |        |         |

| Electrical connections |               |       |                  |                |                    |
|------------------------|---------------|-------|------------------|----------------|--------------------|
| Heating alternative    | Main voltage  |       | Heating power kW | Total power kW | Recommended fuse A |
|                        |               | Hz    |                  |                |                    |
| Electric heated        | 220-240V 3 ~  | 50/60 | 18.0             | 18.3           | 50                 |
|                        | 380-415V 3N ~ | 50/60 | 18.0             | 18.3           | 35                 |
|                        | 440V 3 ~      | 60    | 18.0             | 18.4           | 25                 |
|                        | 480V 3 ~      | 60    | 18.0             | 18.4           | 25                 |
| Steam or Non heated    | 220-480V 1 ~  | 50/60 | -                | 2.3            | 10                 |

| Water and steam connection |       | H7-180  |
|----------------------------|-------|---------|
| Water valves               | DN    | 20      |
| Water pressure             | kPa   | 200-600 |
| Capacity at 300 kPa        | l/min | 30      |
| Drain valve                | ø mm  | 75      |
| Draining capacity          | l/min | 170     |
| Steam valve                | DN    | 15      |
| Steam pressure             | kPa   | 300-600 |
| Liquid detergent supplies  |       | 5       |

| Floor requirements             |    |           |
|--------------------------------|----|-----------|
| Frequency of the dynamic force | Hz | 17.6      |
| Floor load at max extraction   | kN | 4.2 ± 1.0 |

| Sound levels                              |       |       |
|---|-------|-------|
| Sound power/pressure level at extraction* | dB(A) | 84/68 |
| Sound power/pressure level at wash*       | dB(A) | 66/50 |

| Heat emission             |   |
|---------------------------|---|
| % of installed power, max | 5 |

| Shipping data** |                |      |
|-----------------|----------------|------|
| Weight          | net, kg        | 354  |
| Shipping volume | m <sup>3</sup> | 1.66 |

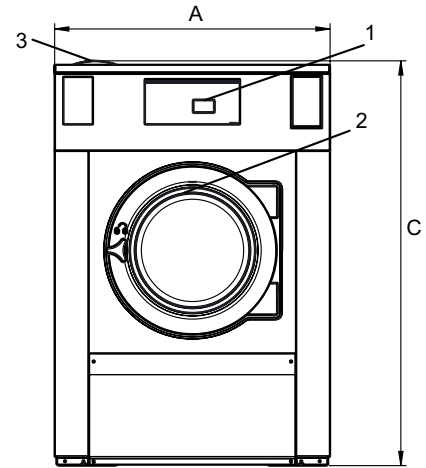
| Accessories                  |   |
|------------------------------|---|
| Steel base                   | x |
| Hose kits for water or steam | x |

| Dimensions in mm |        |      |
|------------------|--------|------|
| A                | Width  | 970  |
| B                | Depth  | 947  |
| C                | Height | 1426 |
| D1               |        | 461  |
| D2               |        | 526  |
| E                |        | 1501 |
| F                |        | 1130 |
| G                |        | 150  |
| H                |        | 1329 |
| I                |        | 397  |
| J                |        | 317  |
| K                |        | 1289 |
| L                |        | 1204 |
| M                |        | 348  |
| N                |        | 100  |
| O                |        | 335  |

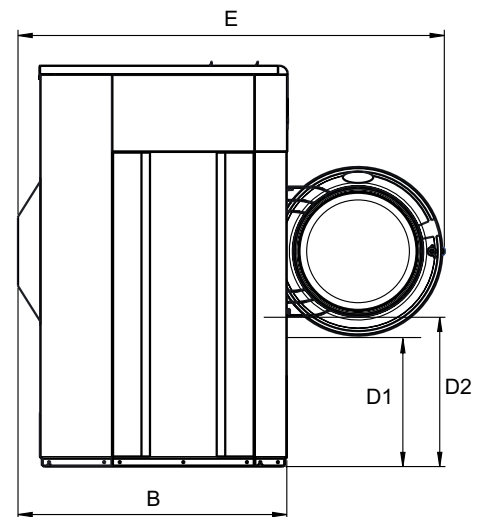
|   |                       |    |                         |
|---|-----------------------|----|-------------------------|
| 1 | Operating panel       | 7  | Drain                   |
| 2 | Door opening ø 435 mm | 8  | Liquid detergent supply |
| 3 | Detergent box         | 9  | Electrical connection   |
| 4 | Cold water            | 10 | Steam connection        |
| 5 | Hot water             |    |                         |
| 6 | Re-used water         |    |                         |

\* Sound power levels measured according to ISO 60704.

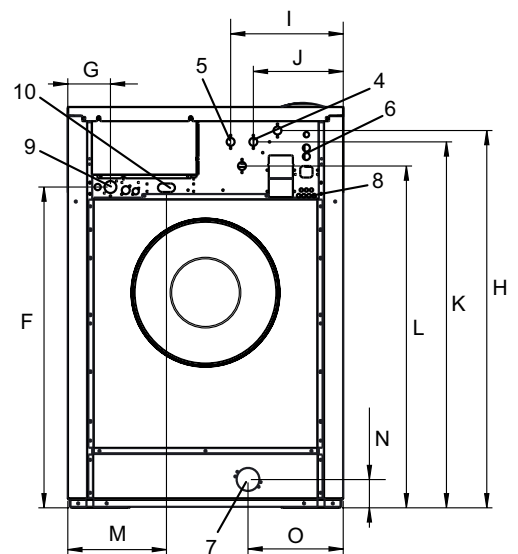
\*\* Average data. Crated weight/shipping volume depends on configuration. Please contact logistics for exact measures.



Front



Side view



Rear