

Washer extractor

H7-75

Features and benefits

- **Intelligent controller offers:**
 - Large display and one control knob for easy program selection
 - Language selection
 - Create new programs in your PC with the Laundry Program Manager, then transfer them to machines via USB port
 - Wash program packages optimized on Economy, Performance and Time. (Available on general programs)
- Low water and energy consumption – see table below
- Four compartment detergent box for manual dosing of powder or liquid detergent
- High extraction force for efficient dewatering
- Door with gasket and strong hinges built for heavy duty operation
- Stainless and galvanized steel in all vital parts for high degree of rust protection
- **Proven robustness:**
 - Maximises the extraction force, leading to highest dewatering and savings in drying
 - Minimizes the stress on the machine, leading to trouble-free operation and increased machine lifetime
 - Reduces vibrations, making it possible to install the machine in all locations



Images shown are a representation of the product only and variations may occur.

Main options

- Automatic liquid detergent supply (optional I/O board)
- Stainless steel front panel
- Connection to booking- /payment- system or coin meter
- Drain pump

Main specifications				H7-75	
Max. capacity	filling factor 1:9	kg/lb		8/18	
Drum, volume		litre		75	
	diameter	ø mm		520	
Extraction		rpm		1245	
G-factor				400	
Standard heating alternatives	electricity	kW		7.5	
Other energy heating alternatives	electricity	kW		2.0* / 3.0* / 5.4*	
	steam			x	
	non-heated			x	
Consumption data "Normal 60°C"				EI	Steam***
Economy**					
Total time		min	47		47
Water consumption (cold+hot)		litre	50+12		62+0
Energy consumption (motor/heating/hot water)		kWh	0.15/0.35/0.75		0.15/-
Steam consumption		kg	-		1.65
<small>* Special requirement on request. ** Water temperature 15°C cold water and 65°C hot water. *** Depending on steam pressure.</small>					

Produced according to ISO 9001 and ISO 14001.

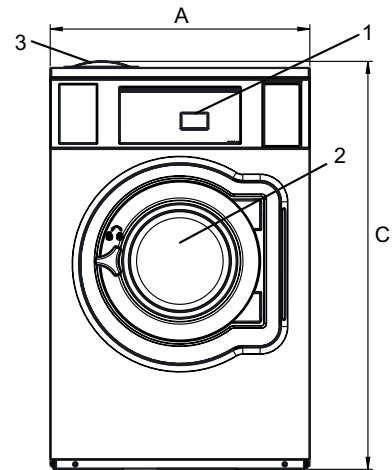
Certified with CB certificate for Low Voltage Directive and S-mark according to the Machinery Directive. Protection class IP X4D.

Electrical connections					
Heating alternative	Main voltage		Heating power kW	Total power kW	Recommended fuse A
		Hz			
Electric heated	220-240V 1~	50/60	7.5	7.6	35
	220-240V 3~	50/60	7.5	7.6	20
	380-415V 3N~	50/60	7.5	7.6	16
	440V 3~	60	7.5	7.6	16
	480V 3~	60	7.5	7.6	10
Steam or Non heated	220-480V 1~	50/60	-	1.0	10

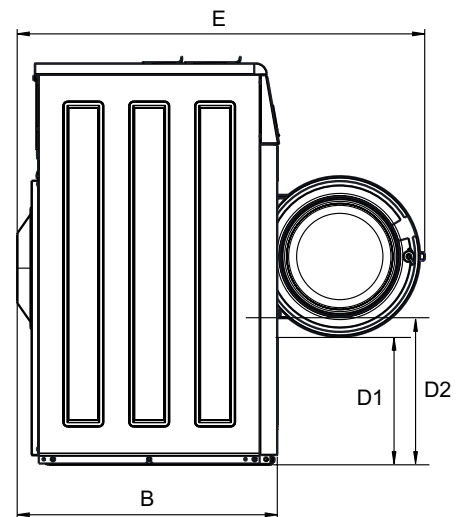
Water and steam connection		H7-75
Water valves	DN	20
Water pressure	kPa	200-600
Capacity at 300 kPa	l/min	20
Drain valve	ø mm	50/75
Draining capacity	l/min	170
Steam valve	DN	15
Steam pressure	kPa	300-600
Liquid detergent supplies		5
Floor requirements		
Frequency of the dynamic force	Hz	20.8
Floor load at max extraction	kN	1.9 ± 0.5
Sound levels		
Sound power/pressure level at extraction*	dB(A)	73/59
Sound power/pressure level at wash*	dB(A)	61/47
Heat emission		
% of installed power, max		5
Shipping data**		
Weight	net, kg	158
Shipping volume	m ³	0.81
Accessories		
Steel base		x
Hose kits for water or steam		x
Dimensions in mm		
A Width		720
B Depth		721
C Height		1132
D1		352
D2		406
E		1130
F		831
G		80
H		1030
I		224
J		124
K		1010
L		910
M		278
N		98
O		239
1 Operating panel	7 Drain	
2 Door opening ø 310 mm	8 Liquid detergent supply	
3 Detergent box	9 Electrical connection	
4 Cold water	10 Steam connection	
5 Hot water		
6 Re-used water		

* Sound power levels measured according to ISO 60704.

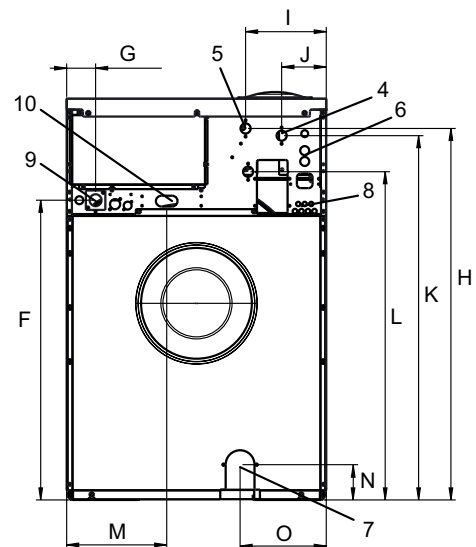
** Average data. Crated weight/shipping volume depends on configuration. Please contact logistics for exact measures.



Front



Side view



Rear