

## Roll-in 1 Full & 1 Glass Door Refrigerator, 1600 lt (+2/+10) - Pass-through

ITEM # \_\_\_\_\_

MODEL # \_\_\_\_\_

NAME # \_\_\_\_\_

SIS # \_\_\_\_\_

AIA # \_\_\_\_\_



729168 (ARI16R2FGT)

1-full and 1-glass door roll-in  
pass-through refrigerator  
1600lt, +2+10°C, AISI 304

### Short Form Specification

**Item No.** \_\_\_\_\_

External and internal in AISI 304 stainless steel. Body insulation thickness 75mm. N. 1 full door and N. 1 glass door with heated frame. Built-in refrigeration unit; ventilated operating mode; digital control; automatic defrost; external digital temperature display. Operating temperature +2+10°C. For ambient temperatures up to 32°C. CFC and HCFC free. R134a gas in refrigeration circuit. Gas in foam: Cyclopentane.

### Main Features

- Certified safety CE requirements.
- One full door and one glass door.
- Adjustable temperature range from -2 °C to +10 °C to suit meat, fish and dairy storage requirements.
- Large digital white-digit display with humidity selection button (3 preset level), internal temperature display and setting, manual activation of defrost cycle and turbo frost cycle (to rapidly cool warm loads).
- Equipped with Optiflow forced air circulation system for rapid cooling and temperature distribution within the cell.
- Tropicalized unit (43°C ambient temperature).
- Fitted with 90 mm thickness of cyclopentane insulation for best insulating performance (thermal conductivity: 0,020 W/m\*K) and lowest environmental impact (GWP=3).
- 0mm clearance installation space: tower configuration cooling unit guarantee performance with frontal ventilation only; this unique solution allows installation against the wall or side by side with other appliances, even on the cooling unit side to maximize the use of kitchen space.
- Frost Watch Control starts automatically the defrosting process only when needed and ends once ice is melted, improving energy efficiency results.
- Combination of doors and drawers to suit any configuration needed, with the possibility to change the configuration on site. Right cooling unit available on request.
- Fully compliant HACCP digital control: when temperature exceeds critical limits, acoustic and visual alarms are activated. Up to two months of event are kept in memory.
- Anti-tilt runners accept GN 1/1 containers.
- Self closing stainless steel doors (< 90°).
- Prearranged to fit RS485 port to facilitate connection to a remote computer and integrated HACCP systems.
- Hydrocarbon refrigerant gas R290 for the lowest environmental impact (GWP=3) - CFC and HCFC free.
- The operating temperature can be adjusted from +2 to +10°C to suit both meat and dairy storage requirements.
- Performance guaranteed at ambient temperatures of +32°C.
- Simple control panel: on/off switch, high/low humidity switch and digital temperature display.
- Automatic defrost and automatic evaporation of defrost water.
- Ventilated cooling for optimal temperature distribution.
- Simple cooling unit easily accessible from the rear of the appliance.
- Universal shock-protectors on all sides.
- Complies with main international certification bodies and is CE marked.

APPROVAL: \_\_\_\_\_

- Plug-in installation: 1 phase, 220/240V supply.
- CFC and HCFC free, highly ecological refrigerant type: R290 (ecological gas in foam: cyclopentane). Hydrocarbon refrigerant gas R290 for the lowest environmental impact (GWP=3), to reduce green house and ozone depletion effects.

### Construction

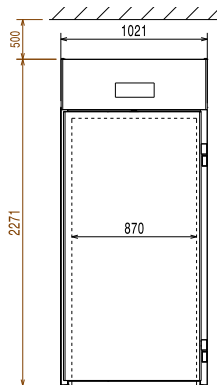
- Interior base with rounded corners, pressed from a single sheet.
- Ease of cleaning and high hygiene standards thanks to the rounded internal corners, the easily removable runners, grids and air conveyors.
- Internal structure with 15 charging positions (3 cm pitch) available to host GN 1/1 grids, ensuring higher net capacity and a greater storage space.
- Built-in compressor to suit operating conditions.
- Interior cell and external panel are constructed in 304 AISI stainless steel.
- 75 mm thick insulation, with cyclopentane injection for long-term insulation and energy saving.
- Refrigerant type: R134a.
- Finished in top quality materials to ensure durability.
- Removable triple-chamber balloon magnetic gasket to improve insulation and reduce energy consumption and ease of cleaning.
- Internal structure with numerous charging positions available to host grids, ensuring higher net capacity and a greater storage space.
- Internal and external doors, front and side panels and removable worktop in AISI 304 Stainless steel.
- External bottom panel in stainless steel.
- External back panel in galvanized steel.
- Developed and produced in ISO 9001 and ISO 14001 certified factory.
- Fault code display.

### Optional Accessories

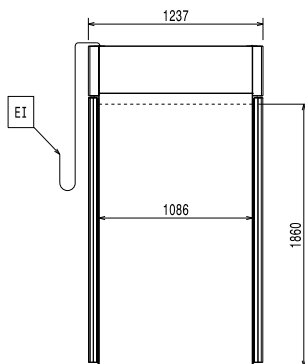
- |   |                                     |
|---|-------------------------------------|
| • Trolley for 2/1GN roll-in rack  | PNC 880017 <input type="checkbox"/> |
| • Base for roll-in-rack   | PNC 880018 <input type="checkbox"/> |
| • 2/1GN roll-in rack  | PNC 881449 <input type="checkbox"/> |
| • Banquet trolley with rack holding 92 plates for 20x2/1GN oven and blast chiller freezer, 85mm pitch | PNC 922055 <input type="checkbox"/> |
| • Trolley for 20x2/1GN roll-in rack   | PNC 922134 <input type="checkbox"/> |
| • Base for 20x2/1GN roll-in rack  | PNC 922142 <input type="checkbox"/> |
| • Kit HACCP EKIS  | PNC 922166 <input type="checkbox"/> |
| • 60mm pitch roll-in rack for 20x2/1GN  | PNC 922204 <input type="checkbox"/> |
| • 80mm pitch roll-in rack for 14x2/1GN  | PNC 922206 <input type="checkbox"/> |



**Front**

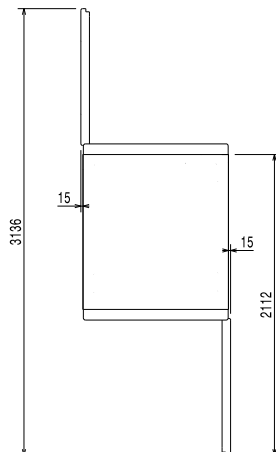


**Side**



**EI** = Electrical inlet (power)  
**RI** = Refrigerant Inlet  
**RO** = Refrigerant Outlet

**Top**



### Electric

Supply voltage:	729168 (ARI16R2FGT)	230 V/1 ph/50 Hz
Electrical power max.:		0.58 kW
Defrost Power:		1 kW
Current consumption:		3.8 Amps
Plug type:		CE-SCHUKO
Energy consumption (min,default):		0 - 0 kW/h

### Key Information:

Gross capacity:	1630 lt
Net Volume:	
Door hinges:	
External dimensions, Width:	1021 mm
External dimensions, Height:	2271 mm
External dimensions, Depth:	1237 mm
Number and type of doors:	2 Full;Glass
Internal Dimensions (depth):	1105 mm
Internal Dimensions (height):	1860 mm
Internal Dimensions (width):	870 mm
Net weight:	220 kg
Shipping volume:	3.79 m <sup>3</sup>
Height adjustment:	0/0 mm
Number and type of grids (included):	- GN 2/1

### Refrigeration Data

Control type:	Digital
Compressor power:	3/8 hp
Refrigerant type:	R134a
GWP Index:	1430
Refrigeration power:	546 W
Refrigeration power at evaporation temperature:	-10 °C
Refrigerant weight:	340 g
Min/Max internal humidity:	60/72
Operating temperature min.:	2 °C
Operating temperature max.:	10 °C
Operating mode:	Ventilated

### Product Information (EU Regulation 2015/1094)

**Energy Class:**  
**Yearly and daily energy consumption:**  
**Climate class:**  
**Energy Efficiency Index (EEI):**