

## Roll-in Roll-in Compact Refrigerator 750 lt - 1 door, left hinged

ITEM # \_\_\_\_\_

MODEL # \_\_\_\_\_

NAME # \_\_\_\_\_

SIS # \_\_\_\_\_

AIA # \_\_\_\_\_



729176 (ARI075R1FL)

1-door roll-in refrigerator 750lt,  
0+10°C, AISI 304, left-hinged

### Short Form Specification

#### Item No.

External and internal in AISI 304 stainless steel. Insulation thickness mm60. Left hinged full door with lock. Bottom door gasket adjustable. Built-in refrigeration unit; ventilated operating mode; digital control; evaporator; automatic defrost; external digital temperature display; high/low humidity switch. Operating temperature 0+10°C. For ambient temperatures up to 43 ° C. CFC and HCFC free. R134a gas in refrigeration circuit. Gas in foam: Cyclopentane.

### Main Features

- Adjustable bottom door gasket.
- Automatic defrost and automatic evaporation of defrost water.
- Excellent space optimisation thanks to the compact dimensions (footprint 0.56m<sup>2</sup>).
- Lift-up control panel to better access main components.
- Simple control panel: on/off switch, high/low humidity switch and digital temperature display.
- Simple cooling unit easily accessible from the rear of the appliance.
- Suitable for all kinds of 18 shelves GN 1/1 trolleys, designed to fit the 18 shelves GN 2/1 trolley available as optional accessory.
- The operating temperature can be adjusted from 0 to +10 ° C to suit both meat and dairy storage requirements.
- Ventilated cooling for optimal temperature distribution.
- One full door.
- Inner side protectors to protect the internal walls.
- Left hinged door.
- Certified safety CE requirements.
- Adjustable temperature range from -2 °C to +10 °C to suit meat, fish and dairy storage requirements.
- Large digital white-digit display with humidity selection button (3 preset level), internal temperature display and setting, manual activation of defrost cycle and turbo frost cycle (to rapidly cool warm loads).
- Equipped with Optiflow forced air circulation system for rapid cooling and temperature distribution within the cell.
- Tropicalized unit (43°C ambient temperature).
- Fitted with 90 mm thickness of cyclopentane insulation for best insulating performance (thermal conductivity: 0,020 W/m\*K) and lowest environmental impact (GWP=3).
- 0mm clearance installation space: tower configuration cooling unit guarantee performance with frontal ventilation only; this unique solution allows installation against the wall or side by side with other appliances, even on the cooling unit side to maximize the use of kitchen space.
- Frost Watch Control starts automatically the defrosting process only when needed and ends once ice is melted, improving energy efficiency results.
- Combination of doors and drawers to suit any configuration needed, with the possibility to change the configuration on site. Right cooling unit available on request.
- Fully compliant HACCP digital control: when temperature exceeds critical limits, acoustic and visual alarms are activated. Up to two months of event are kept in memory.
- Anti-tilt runners accept GN 1/1 containers.
- Self closing stainless steel doors (< 90°).
- Prearranged to fit RS485 port to facilitate connection to a remote computer and integrated HACCP systems.
- Hydrocarbon refrigerant gas R290 for the lowest environmental impact (GWP=3) - CFC and HCFC free.
- CFC and HCFC free, highly ecological refrigerant type: R290 (ecological gas in foam: cyclopentane). Hydrocarbon refrigerant gas R290 for the lowest environmental impact (GWP=3), to reduce green house and ozone depletion effects.

### Construction

APPROVAL: \_\_\_\_\_

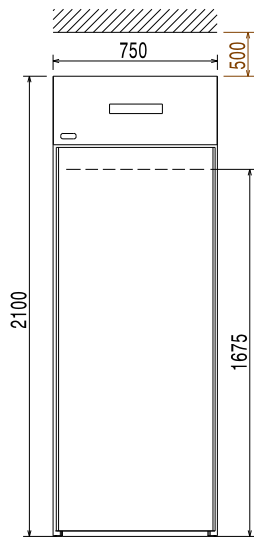
- Built-in compressor to suit operating conditions.
- Interior cell and external panel are constructed in 304 AISI stainless steel.
- Bottom panel with rounded internal corners avoids dirt traps.
- Refrigerant type: R134a.
- Developed and produced in ISO 9001 and ISO 14001 certified factory.
- Cabinet fitted with up to 60 mm thickness of Cyclopentane insulation for best insulating performance (thermal conductivity: 0,020 W/m\*K). CFC and HCFC-free insulation.
- Interior base with rounded corners, pressed from a single sheet.
- Ease of cleaning and high hygiene standards thanks to the rounded internal corners, the easily removable runners, grids and air conveyors.
- Internal structure with 15 charging positions (3 cm pitch) available to host GN 1/1 grids, ensuring higher net capacity and a greater storage space.
- Removable triple-chamber balloon magnetic gasket to improve insulation and reduce energy consumption and ease of cleaning.
- Internal structure with numerous charging positions available to host grids, ensuring higher net capacity and a greater storage space.
- Internal and external doors, front and side panels and removable worktop in AISI 304 Stainless steel.
- External bottom panel in stainless steel.
- External back panel in galvanized steel.
- Fault code display.

### Optional Accessories

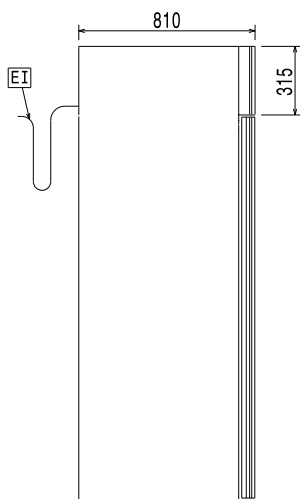
- Trolley for 18x2/1GN roll-in 750L PNC 881521



**Front**

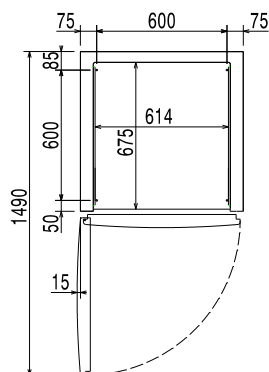


**Side**



**EI** = Electrical inlet (power)  
**RI** = Refrigerant Inlet  
**RO** = Refrigerant Outlet

**Top**



### Electric

Supply voltage:	729176 (ARI075R1FL)	230 V/1 ph/50 Hz
Electrical power max.:		0.39 kW
Defrost Power:		0.45 kW
Current consumption:		3.3 Amps
Plug type:		CE-SCHUKO
Energy consumption (min,default):		0 - 0 kW/h

### Key Information:

Gross capacity:	750 lt
Net Volume:	615 lt
Door hinges:	
External dimensions, Width:	750 mm
External dimensions, Height:	2100 mm
External dimensions, Depth:	810 mm
Number and type of doors:	1 Full
Internal Dimensions (depth):	695 mm
Internal Dimensions (height):	1675 mm
Internal Dimensions (width):	614 mm
Net weight:	150 kg
Shipping volume:	1.69 m <sup>3</sup>
Height adjustment:	0/0 mm
Number and type of grids (included):	- GN 2/1

### Refrigeration Data

Control type:	Digital
Compressor power:	3/8 hp
Refrigerant type:	R134a
GWP Index:	1430
Refrigeration power:	523 W
Refrigeration power at evaporation temperature:	-10 °C
Refrigerant weight:	260 g
Min/Max internal humidity:	70/80
Operating temperature min.:	0 °C
Operating temperature max.:	10 °C
Operating mode:	Ventilated

### Product Information (EU Regulation 2015/1094)

**Energy Class:**  
**Yearly and daily energy consumption:**  
**Climate class:**  
**Energy Efficiency Index (EEI):**