

Digital Undercounter Refrigerated Counter Saladette - 250lt, 2 Door with marble top

ITEM # _____

MODEL # _____

NAME # _____

SIS # _____

AIA # _____



729015 (APTR259)

2-door refrigerated preparation table with marble top 250lt, +2+10°C, AISI 304

Short Form Specification

Item No. _____

Constructed entirely in 304 AISI stainless steel. Marble top. Can accommodate 5 GN 1/6 containers. High-density expanded polyurethane foam, 50 mm in thickness, with cyclopentane injection. Height-adjustable feet. Lower refrigerated compartment designed to accommodate GN 1/1 containers and equipped with N. 2 hinged doors. Built-in refrigeration unit. Ventilated. Refrigerant R134a. Digital control panel. Automatic evaporation of defrost water. Drain outlet. Suitable to operate in ambient temperatures up to +32° C. Temperature range: +2+10°C. CFC and HCFC free.

Main Features

- Suitable for use in ambient temperatures of up to 32 ° C.
- Adjustable temperature range from 2 °C to 10 °C to suit meat, fish and dairy storage requirements.
- Digital control panel.
- Marble worktop suitable for 5 GN 1/6 containers.
- Drain outlet and automatic evaporation of defrost water.
- Certified safety CE requirements.
- Fully removable cooling unit to facilitate maintenance.
- Frontal and easy access to all components in the cooling unit.
- Hot gas automatic evaporation of defrost water.

Construction

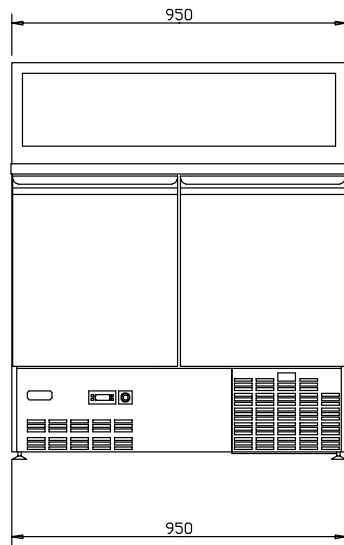
- Mounted on legs with height adjustment.
- Built-in compressor to suit operating conditions.
- Developed and produced in ISO 9001 and ISO 14001 certified factory.
- Interior base with rounded corners, pressed from a single sheet.
- Ease of cleaning and high hygiene standards thanks to the rounded internal corners, the easily removable runners, grids and air conveyors.
- Built-in refrigeration unit.
- Fault code display.

Optional Accessories

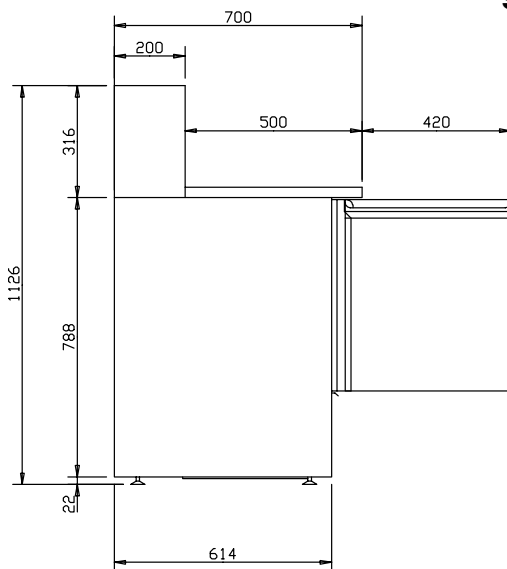
- Kit integrated HACCP for digital refrigerators (IR33) PNC 880252
- 1/1GN gray rilsan grid PNC 881435
- KIT HACCP EKIS PNC 922166

APPROVAL: _____

Digital Undercounter Refrigerated Counter Saladette - 250lt, 2 Door with marble top

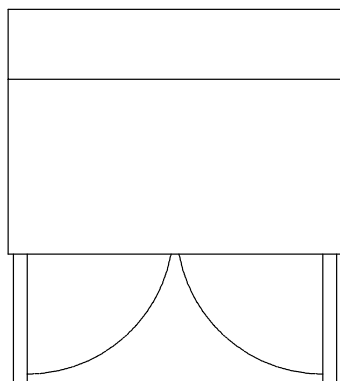


Front



Side

EI = Electrical inlet (power)



Top

Electric

Supply voltage:	729015 (APTR259)	220-240 V/1 ph/50 Hz
Electrical power max.:		0.29 kW
Defrost Power:		
Current consumption:		2 Amps
Plug type:		CE-SCHUKO

Key Information:

Gross capacity:	250 lt
Net Volume:	140 lt
Door hinges:	
External dimensions, Width:	950 mm
External dimensions, Height:	1126 mm
External dimensions, Depth:	700 mm
Internal Dimensions (depth):	550 mm
Internal Dimensions (height):	520 mm
Internal Dimensions (width):	870 mm
Net weight:	99 kg
Shipping volume:	0.95 m ³
Depth with doors open:	1120 mm
Height adjustment:	0/0 mm

Refrigeration Data

Control type:	Digital
Compressor power:	1/5 hp
Refrigerant type:	R134a
GWP Index:	1300
Refrigeration power:	253 W
Refrigeration power at evaporation temperature:	-20 °C
Refrigerant weight:	120 g
Min/Max internal humidity:	50/70/
Operating temperature min.:	2 °C
Operating temperature max.:	10 °C
Operating mode:	Ventilated

Product Information (EU Regulation 2015/1094)

Energy Class:	
Yearly and daily energy consumption:	
Climate class:	
Energy Efficiency Index (EEI):	

Digital Undercounter Refrigerated Counter Saladette - 250lt, 2 Door with marble top

The company reserves the right to make modifications to the products without prior notice. All information correct at time of printing.