

Refrigeration Equipment 1-Door Full Height Reach In Back Room Refrigerator 31" Long

ITEM # _____
MODEL # _____
NAME # _____
SIS # _____
AIA # _____



738251 (KCHRI25R1DRE)

1-Door Full Height Reach In
Back Room Refrigerator 31
" Long

Short Form Specification

Item No.

1 full door refrigerator with door in 430 stainless steel, exterior back and bottom panels in galvanized steel, exterior side and top panels in prepainted steel; interior back, side, top and bottom panels in white High Impact Polystyrene. Control with cabinet temperature display. Self-closing door feature with lock and key. Temperature range: 32 °F min / 46 °F max.

R290 gas in the refrigeration circuit.

ETL Safety and Sanitation certifications.

3/5 Years warranty.

Main Features

- External temperature display.
- Removable gasket for easy cleaning operations.
- Fin & Tube Condenser improves performance in high temperature environments.
- Automatic Defrost Cooling System provides worry-free performance.
- Electronic Temperature Control, quick and simple to set, with control display for easy monitoring.
- Cabinet completely insulated with high density polyurethane for low environmental impact.
- Back bottom mounted cooling unit guarantee an easy access and cleaning.

Construction

- Lockable door.
- Self-closing door with 90-degree stay-open feature.
- Heavy duty casters.
- Pre-wired heavy duty power cord.
- Heavy duty door hinges.
- Magnetic gasket removable without tools for easy cleaning.
- PVC shelves.

Sustainability

- CFC and HCFC free, highly ecological refrigerant type: R290 (ecological gas in foam: cyclopentane). Hydrocarbon refrigerant gas R290 for the lowest environmental impact (GWP=3), to reduce green house and ozone depletion effects.
- Hydrocarbon refrigerant gas R290 for the lowest environmental impact (GWP=3) - CFC and HCFC free.
- High efficiency components to minimize the energy consumption still guaranteeing the highest performances.

Included Accessories

- 3 of Shelf for 25" Reach-In PNC 880678

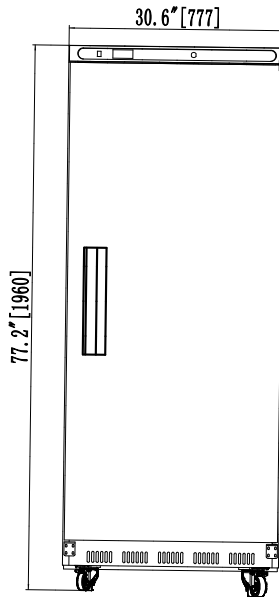
Optional Accessories

- Shelf clips (4-pack) PNC 880611 ☐
- Shelf for 25" Reach-In PNC 880678 ☐

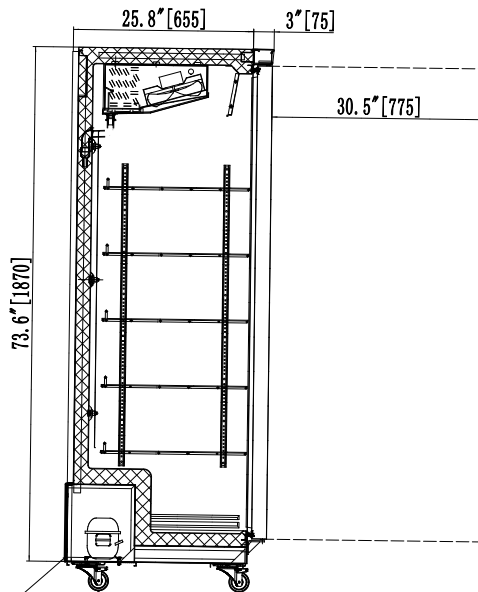
APPROVAL: _____

Refrigeration Equipment 1-Door Full Height Reach In Back Room Refrigerator 31" Long

Front

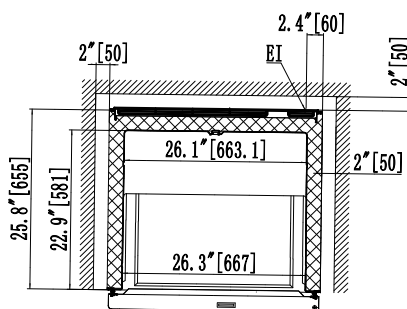


Side



EI = Electrical connection

Top



Electric

Supply voltage: 115 V/1 ph/60 Hz
Plug type: USA NEMA 5-15P

Capacity:

Gross capacity: 22.7 cu.feet

Key Information:

Warranty: 3 / 5 years
Door hinges: Right Side
External dimensions, Width: 30 9/16" (777 mm)
External dimensions, Depth: 28 3/4" (730 mm)
External dimensions, Height: 77 3/16" (1960 mm)
Number and type of doors: 1 Full
Internal Dimensions (depth): 22 3/4" / (578 mm)
Internal Dimensions (height): 65 3/8" / (1660 mm)
Internal Dimensions (width): 26 3/8" / (670 mm)
Shipping height: 82 11/16" (2100 mm)
Shipping weight: 267 lbs (121 kg)
Shipping volume: 47.34 ft³ (1.34 m³)
Type of external material: Prepainted Steel
Type of internal material: High Impact White Polystyrene
Approvals: ETL C&US;ETL SANITATION

Refrigeration Data

Condenser type: Fin & tube
Operating temperature min.: 32 °F
Compressor power: 1/5 hp
Operating temperature max.: 41 °F
Defrost type: auto defrost

Sustainability

Current consumption: 3 Amps
Refrigerant type: R290
GWP Index: 3
Refrigerant weight: 94 g

