



COMMERCIAL

Refrigeration Equipment 2-Drawer Refrigerator Under Counter 27" Long

ITEM # _____

MODEL # _____

NAME # _____

SIS # _____

AIA # _____



738290 (KCHUC27.2DR)

2-Drawer Refrigerator Under
Counter 27" Long

Short Form Specification

Item No. _____

2-drawer refrigerator counter top with exterior back panel in aluminium, exterior bottom panel in galvanized steel, exterior side and top panel in 430 stainless steel; interior back, top and bottom panels in 304 stainless steel.

Fin & tube condenser to improve the performances in high temperature environments. Automatic Defrost Cooling System and temperature control. Vinyl heavy duty adjustable, easy to handle and clean shelves. External temperature display.

R600a gas in refrigeration circuit.
ETL Safety and Sanitation certified.
3/5 Years warranty.

Main Features

- External temperature display.
- Removable gasket for easy cleaning operations.
- Fin & Tube Condenser improves performance in high temperature environments.
- Automatic Defrost Cooling System provides worry-free performance.
- Electronic Temperature Control, quick and simple to set, with control display for easy monitoring.
- Heavy duty Vinyl coated steel shelves.
- Cabinet completely insulated with high density polyurethane for low environmental impact.

Construction

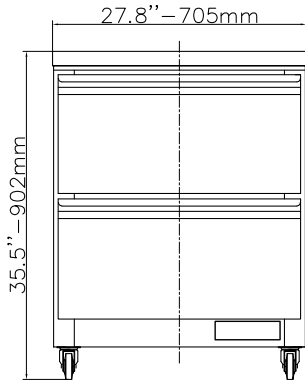
- Stainless steel interior and exterior, durable and easy to clean for daily commercial use.
- Heavy duty casters.
- Pre-wired heavy duty power cord.
- Magnetic gasket removable without tools for easy cleaning.
- Heavy duty drawer runners.

Sustainability

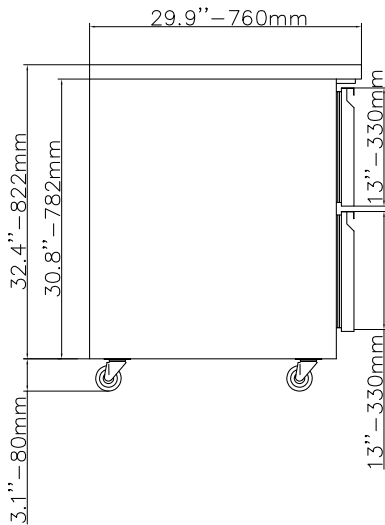
- High efficiency components to minimize the energy consumption still guaranteeing the highest performances.
- CFC and HCFC free (ecological refrigerant type: R600a).

APPROVAL: _____

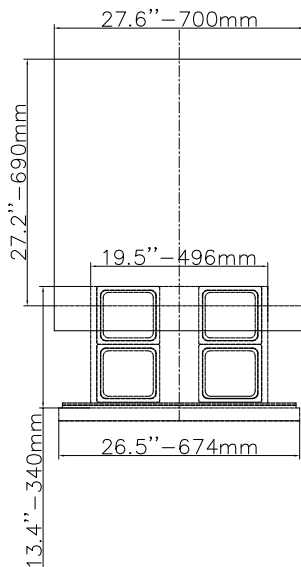
Front



Side



Top



EI = Electrical connection

Electric

Supply voltage:	115 V/1 ph/60 Hz
738290 (KCHUC27.2DR)	
Electrical power, max:	0.2 kW
Plug type:	USA NEMA 5-15P

Key Information:

Capacity (Cu.Ft.)	27
External dimensions, Width:	27 3/4" (705 mm)
External dimensions, Depth:	29 15/16" (760 mm)
External dimensions, Height:	35 1/2" (902 mm)
Number and type of doors:	
Internal Dimensions (depth):	22 13/16"
Internal Dimensions (height):	23 1/2"
Internal Dimensions (width):	22 1/4"
Shipping height:	38 3/16" (970 mm)
Shipping weight:	209 lbs (95 kg)
Shipping volume:	20.41 ft ³ (0.58 m ³)
Number and type of grids (included):	1 - Vinyl-Coated Steel
Type of external material:	Stainless Steel
Type of internal material:	Polystyrene
Warranty:	3 / 5 years

Refrigeration Data

Compressor Horsepower:	1/6
Operating temperature min.:	ISO 9001 °F
Operating temperature max.:	41 °F
Condenser type:	Fin & tube
Defrost type:	Auto Defrost

Sustainability

Current consumption:	1.5 Amps
Refrigerant type:	R600a
Refrigerant weight:	70 g

Refrigeration Equipment
2-Drawer Refrigerator Under Counter 27" Long

The company reserves the right to make modifications to the products without prior notice. All information correct at time of printing.

