

Refrigeration Equipment 2-Drawer Refrigerator Under Counter 27" Long

ITEM # _____
MODEL # _____
NAME # _____
SIS # _____
AIA # _____



738290 (KCHUC27.2DR)

2-Drawer Refrigerator Under
Counter 27" Long

Short Form Specification

Item No. _____

2-drawer refrigerator counter top, 35.5 inches tall, with exterior back panel, exterior bottom panel, and exterior top panel in galvanized steel, exterior side panel in 430 stainless steel; interior back, top and bottom panels in 304 stainless steel. Fin & tube condenser to improve the performances in high temperature environments. Automatic Defrost Cooling System and temperature control. Vinyl heavy duty adjustable, easy to handle and clean shelves. External temperature display.

R600a gas in refrigeration circuit.
ETL Safety and Sanitation certified.
3/5 Years warranty.

Main Features

- External temperature display.
- Removable gasket for easy cleaning operations.
- Fin & Tube Condenser improves performance in high temperature environments.
- Automatic Defrost Cooling System provides worry-free performance.
- Electronic Temperature Control, quick and simple to set, with control display for easy monitoring.
- Cabinet completely insulated with high density polyurethane for low environmental impact.

Construction

- Stainless steel interior and exterior, durable and easy to clean for daily commercial use.
- Heavy duty casters.
- Pre-wired heavy duty power cord.
- Magnetic gasket removable without tools for easy cleaning.
- Heavy duty drawer runners.

Sustainability

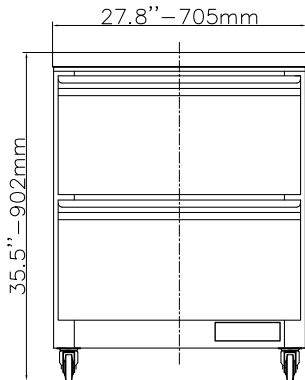
- High efficiency components to minimize the energy consumption still guaranteeing the highest performances.
- CFC and HCFC free (ecological refrigerant type: R600a).

Optional Accessories

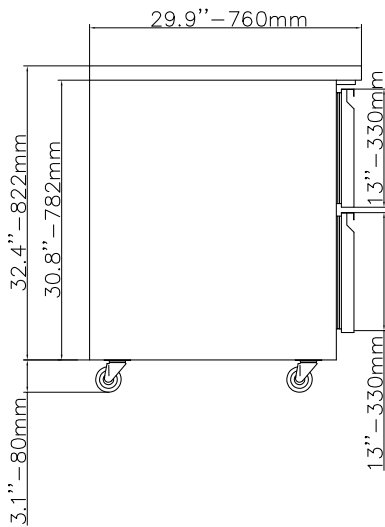
- 1 ADJUSTABLE FOOT PNC 206445 ☐

APPROVAL: _____

Front

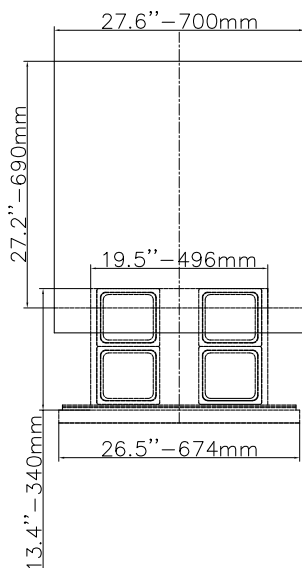


Side



El = Electrical connection

Top



Electric

| | |
|------------------------|------------------|
| Supply voltage: | 115 V/1 ph/60 Hz |
| Electrical power, max: | 0.16 kW |
| Plug type: | USA NEMA 5-15P |

Capacity:

| | |
|-----------------|-------------|
| Gross capacity: | 6.5 cu.feet |
|-----------------|-------------|

Key Information:

| | |
|-------------------------------|--|
| Warranty: | 3 / 5 years |
| Capacity: | 6.50004 cu.ft. |
| External dimensions, Width: | 27 3/4" (705 mm) |
| External dimensions, Depth: | 29 15/16" (760 mm) |
| External dimensions, Height: | 35 1/2" (902 mm) |
| Internal Dimensions (depth): | 22 13/16" / (580 mm) |
| Internal Dimensions (height): | 23 1/2" / (597 mm) |
| Internal Dimensions (width): | 22 1/4" / (565 mm) |
| Shipping height: | 38 3/16" (970 mm) |
| Shipping weight: | 209 lbs (95 kg) |
| Shipping volume: | 20.41 ft ³ (0.58 m ³) |
| Type of external material: | Stainless Steel |
| Type of internal material: | Polystyrene |
| Approvals | ETL C&US;ETL SANITATION |
| N° of drawers: | 2 |

Refrigeration Data

| | |
|-----------------------------|--------------|
| Condenser type: | Fin & tube |
| Operating temperature min.: | 32 °F |
| Compressor power: | 1/10 hp |
| Operating temperature max.: | 41 °F |
| Defrost type: | Auto Defrost |

Sustainability

| | |
|----------------------|----------|
| Current consumption: | 1.5 Amps |
| Refrigerant type: | R600a |
| GWP Index: | 3 |
| Refrigerant weight: | 70 g |