

Refrigeration Equipment 1-Door Refrigerated Work Top 27" Long

ITEM # _____
MODEL # _____
NAME # _____
SIS # _____
AIA # _____



738299 (KCHUCWT27R)

1-Door Refrigerated Work Top
27" Long

Short Form Specification

Item No.

1-door refrigerator counter top, with worktop, with exterior back panel, exterior bottom panel, and exterior top panel in galvanized steel, exterior side panel in 430 stainless steel; interior back, top and bottom panels in 304 stainless steel. Fin & tube condenser to improve the performances in high temperature environments. Automatic Defrost Cooling System and temperature control. Vinyl heavy duty adjustable, easy to handle and clean shelves. On-site reversible door feature, with required left side door hinges, for units with serial number 24020014 or later. External temperature display.

R600a gas in refrigeration circuit.
ETL Safety and Sanitation certified.
3/5 Years warranty.

Main Features

- External temperature display.
- Removable gasket for easy cleaning operations.
- Fin & Tube Condenser improves performance in high temperature environments.
- Automatic Defrost Cooling System provides worry-free performance.
- Electronic Temperature Control, quick and simple to set, with control display for easy monitoring.
- Heavy duty Vinyl coated steel shelves.
- Cabinet completely insulated with high density polyurethane for low environmental impact.

Construction

- Self-closing door with 90-degree stay-open feature.
- Heavy duty casters.
- Pre-wired heavy duty power cord.
- Heavy duty door hinges.
- Magnetic gasket removable without tools for easy cleaning.

Sustainability

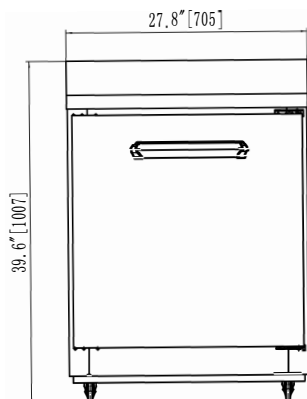
- High efficiency components to minimize the energy consumption still guaranteeing the highest performances.
- CFC and HCFC free (ecological refrigerant type: R600a).

Optional Accessories

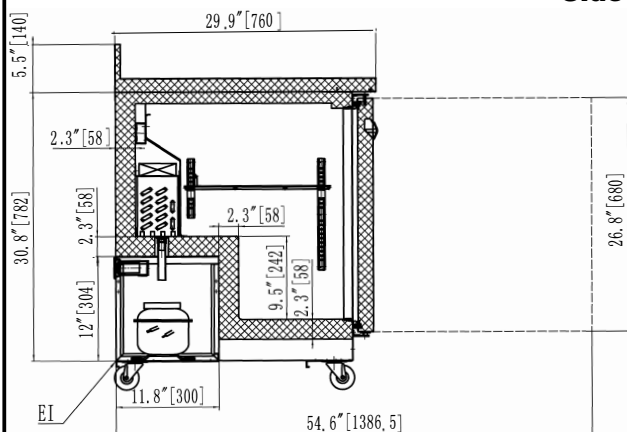
- 1 ADJUSTABLE FOOT PNC 206445 ☐
- Drawer Kit for 27" Undercounter PNC 880614 ☐

APPROVAL: _____

Front

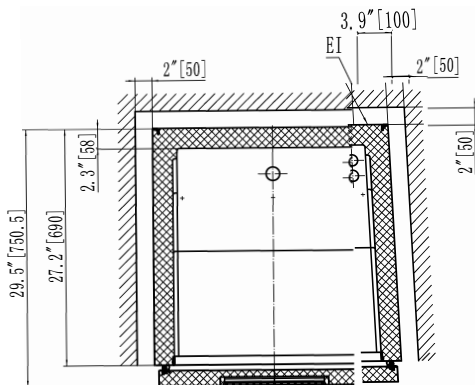


Side



EI = Electrical connection

Top



Electric

Supply voltage:	115 V/1 ph/60 Hz
Electrical power, max:	0.16 kW
Plug type:	USA NEMA 5-15P

Key Information:

Number and type of grids (included):	1 - Vinyl-Coated Steel
Warranty:	3 / 5 years
Door hinges:	Right Side
Capacity:	6.50004 cu.ft.
External dimensions, Width:	27 3/4" (705 mm)
External dimensions, Depth:	29 15/16" (760 mm)
External dimensions, Height:	39 5/8" (1007 mm)
Number and type of doors:	1 Full
Internal Dimensions (depth):	22 13/16" / (580 mm)
Internal Dimensions (height):	23 1/2" / (597 mm)
Internal Dimensions (width):	22 1/4" / (565 mm)
Shipping height:	42 1/8" (1070 mm)
Shipping weight:	174 lbs (79 kg)
Shipping volume:	22.52 ft ³ (0.64 m ³)
Type of external material:	Stainless Steel
Type of internal material:	Polystyrene
Approvals	ENERGY STAR;ETL C&US;ETL SANITATION

Refrigeration Data

Condenser type:	Fin & tube
Operating temperature min.:	32 °F
Compressor power:	1/10 hp
Operating temperature max.:	41 °F
Defrost type:	Auto Defrost

Sustainability

Current consumption:	1.5 Amps
Refrigerant type:	R600a
GWP Index:	3
Refrigerant weight:	70 g

