



COMMERCIAL

Refrigeration Equipment 3 Glass Door Refrig. 72 cu. ft. +33/+41 F SS (R290)

ITEM # _____

MODEL # _____

NAME # _____

SIS # _____

AIA # _____



738315 (KCHRI81R3GDR)

3-Glass Door Full Height Refrigerator 81" Long

Short Form Specification

Item No. _____

3-full glass door refrigerator with exterior back and bottom panels in galvanized steel, exterior side and top panels in 430 stainless steel; interior back, side, top and bottom panels in 304 stainless steel. Control with cabinet temperature display. Self-closing and on-site reversible door feature lock and key. R290 gas in the refrigeration circuit. ETL Safety and Sanitation certifications. 3/5 Years warranty.

Main Features

- External digital temperature display.
- CFC and HCFC free, highly ecological refrigerant type: R290 (ecological gas in foam: cyclopentane). Hydrocarbon refrigerant gas R290 for the lowest environmental impact (GWP=3), to reduce green house and ozone depletion effects.
- Removable gasket for easy cleaning operations.
- Fin & Tube Condenser improves performance in high temperature environments.
- Automatic Defrost Cooling System provides worry-free performance.
- Electronic Temperature Control, quick and simple to set, with control display for easy monitoring.
- High efficiency components to minimize the energy consumption still guaranteeing the highest performances.
- Cabinet completely insulated with high density polyurethane for low environmental impact.
- Back bottom mounted cooling unit guarantee an easy access and cleaning.
- Heavy duty Vinyl coated steel shelves.
- Interior LED light to save energy and for best internal visibility.

Construction

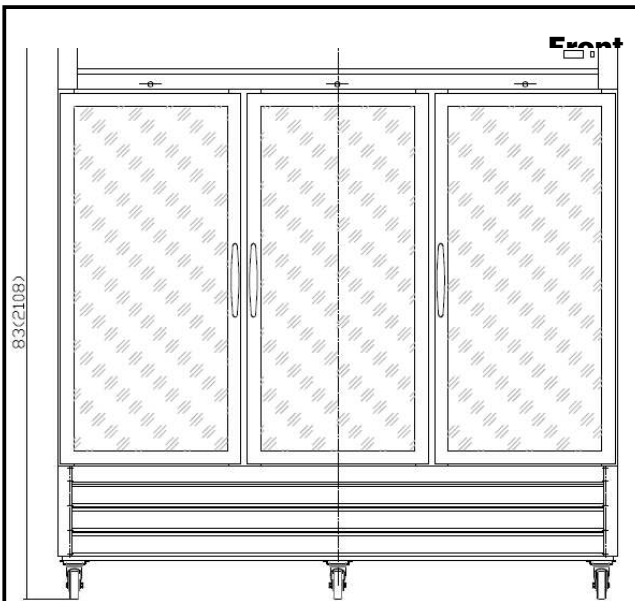
- Stainless steel interior and exterior, durable and easy to clean for daily commercial use.
- Lockable door.
- Heavy duty casters.
- Magnetic gasket removable without tools for easy cleaning.
- Pre-wired heavy duty power cord.
- Heavy duty door hinges.

APPROVAL: _____

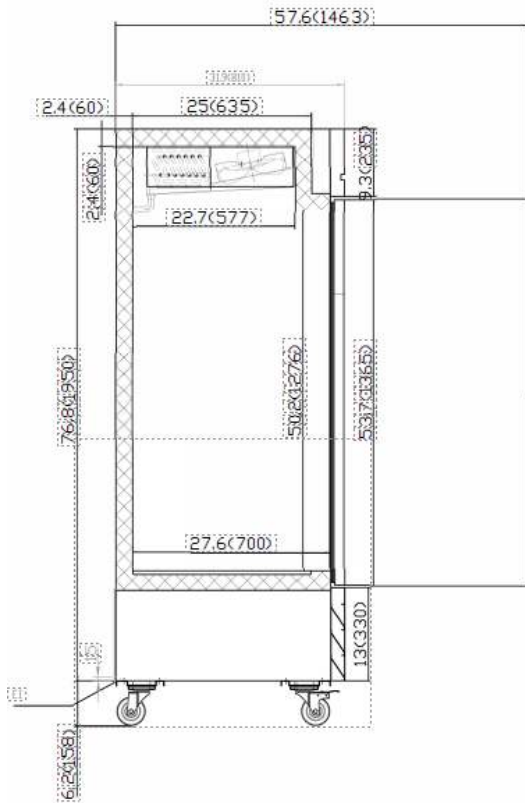
Part of



Kelvinator Commercial
www.kelvinatorcommercial.com



side



EI = Electrical connection

Electric

Supply voltage:	738315 (KCHRI81R3GDR)	120 V/1 ph/60 Hz
Electrical power, max:		0.5 kW
Plug type:		USA NEMA 5-15P

Key Information:

Door hinges:	1 Left+2 Right
Capacity (Cu. Ft.):	72
External dimensions, Width:	83 11/16" (2125 mm)
External dimensions, Depth:	34 1/16" (865 mm)
External dimensions, Height:	84 5/8" (2150 mm)
Number and type of doors:	3 ;Glass
Internal Dimensions (depth):	27 9/16"
Internal Dimensions (height):	59 7/16"
Internal Dimensions (width):	76 7/16"
Shipping height:	87 1/64" (2210 mm)
Shipping weight:	860 lbs (390 kg)
Shipping volume:	148.48 ft ³ (4.21 m ³)
Number/Type of grids (included):	3 - Vinyl-Coated steel
Type of external material:	430 ASI
Type of internal material:	304 AISI
Warranty:	3 / 5 Years
Approvals	;ETL C&US;ETL SANITATION

Refrigeration Data

Compressor Horsepower:	1/6
Operating temperature min.:	34.9 °F
Operating temperature max.:	39 °F
Condenser type:	Fin & Tube
Defrost type:	Automatic

Sustainability

Current consumption:	7 Amps
Refrigerant type:	R290