



COMMERCIAL

Refrigeration Equipment 1 Door Freezer Undercounter 23.6" -9F SS (R600a)

ITEM # _____

MODEL # _____

NAME # _____

SIS # _____

AIA # _____



738324 (KCHUC23F)

1-Solid Door ADA Height Under Counter Freezer 27" Long

Short Form Specification

Item No. _____

1-door ADA compliant undercounter refrigerator with exterior back panel in aluminum, exterior bottom panel in galvanized steel, exterior side and top panel in 430 stainless steel; interior back, top and bottom panels in high impact white polystyrene. Fin & tube condenser to improve the performances in high temperature environments. Automatic Defrost Cooling System and temperature control. Vinyl heavy duty adjustable, easy to handle and clean shelves. External temperature display. R290 gas in refrigeration circuit. ETL Safety and Sanitation certified. 3/5 Years warranty.

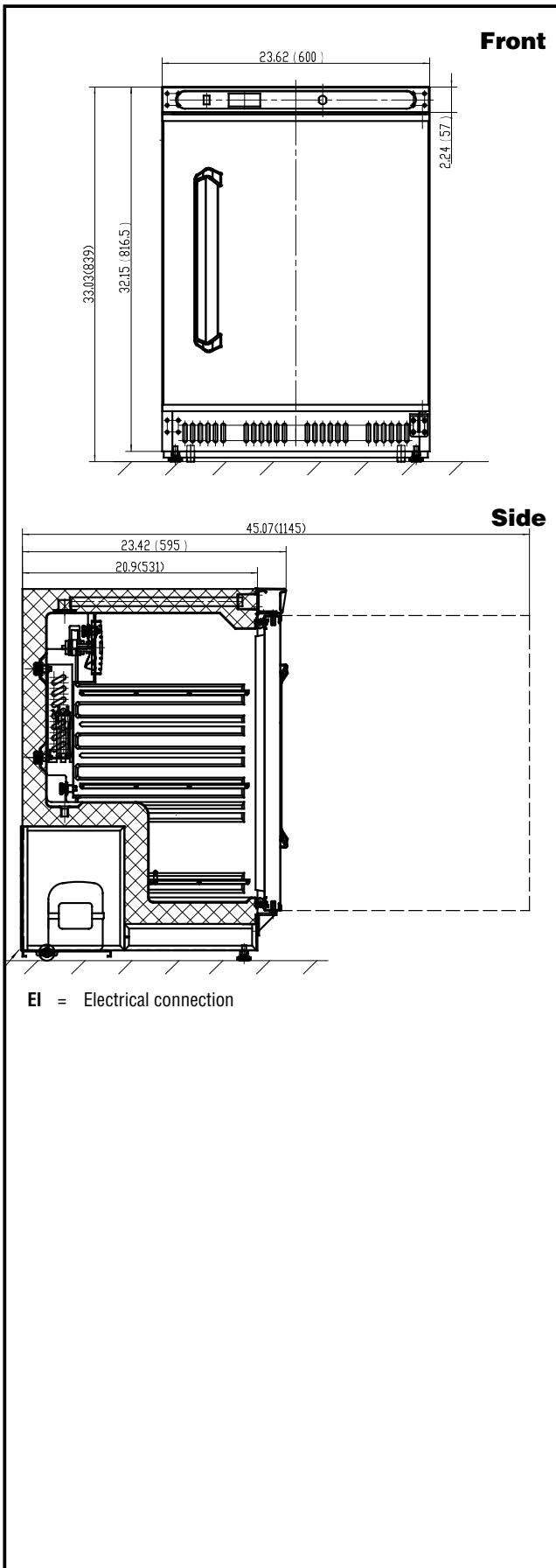
Main Features

- ADA Height Compliant
- External temperature display.
- CFC and HCFC free, highly ecological refrigerant type: R290 (ecological gas in foam: cyclopentane). Hydrocarbon refrigerant gas R290 for the lowest environmental impact (GWP=3), to reduce green house and ozone depletion effects.
- Removable gasket for easy cleaning operations.
- Fin & Tube Condenser improves performance in high temperature environments.
- Automatic Defrost Cooling System provides worry-free performance.
- Electronic Temperature Control, quick and simple to set, with control display for easy monitoring.
- High efficiency components to minimize the energy consumption still guaranteeing the highest performances.
- Cabinet completely insulated with high density polyurethane for low environmental impact.
- Heavy duty Vinyl coated steel shelves.

Construction

- Stainless steel interior and exterior, durable and easy to clean for daily commercial use.
- Lockable door.
- Heavy duty casters.
- Magnetic gasket removable without tools for easy cleaning.
- Pre-wired heavy duty power cord.
- Heavy duty door hinges.

APPROVAL: _____



Electric

Supply voltage:	
738324 (KCHUC23F)	120 V/1 ph/60 Hz
Electrical power, max:	0.2 kW
Defrost Power	
Plug type:	NEMA 5-15
Maximum Over-Current Protection (MOP):	0A

Key Information:

Capacity:	4.38892 cu.ft.
External dimensions, Width:	26 3/4" (680 mm)
External dimensions, Depth:	25 9/16" (650 mm)
External dimensions, Height:	41 5/16" (1050 mm)
Internal Dimensions (depth):	15 15/16"
Internal Dimensions (height):	24 5/8"
Internal Dimensions (width):	19 5/16"
Shipping height:	43 11/16" (1110 mm)
Shipping weight:	181 lbs (82 kg)
Shipping volume:	17.73 ft ³ (0.5 m ³)
Approvals	;ETL C&US;ETL SANITATION

Refrigeration Data

Operating temperature min.:	-7.1 °F
Operating temperature max.:	-2.9 °F
Refrigerant type:	

Sustainability

Current consumption:	
Refrigerant type:	R290