

# TANGO ST SOLO 120



**Ref: 602609  
(UTANGOST1)**

Super Automatic Espresso Machine

- 1 Group
- 2 Grinders
- No Milk System - Teflon Steam - Mitigated Hot Water
- 380-415V 3N 50/60~Hz
- CE/CB Certified
- Inox

## General Features

The Tango® ST delivers exceptional coffee quality with the patented Tango® Dual Infusion Chamber, engineered for high performance and precision. Ideal for busy environments like cafes, bars, and hospitality venues, this super-automatic machine offer unparalleled reliability and consistency, creating outstanding espresso every time. With intuitive controls and robust features, the Tango® ST makes exceptional coffee accessible for both barista and self-service settings.

# TANGO ST SOLO 120

## Main Features

- The super automatic coffee machine Tango® ST Solo takes up a 7" color touch screen user interface to control intuitively the TANGO® group head recognized for its exceptional coffee extraction quality. It aims to automatically transform coffee and fresh milk into a variety of espresso beverages.
- 1 group full-automatic machine.
- 6.5 liter steam/coffee boiler.
- Auto cleaning program.
- Programmable water and steam.
- The machine is able to create and compose a choice of 48 drinks menu and delivers 2 drinks simultaneously operating water and steam: it impresses its users with an exceptional result in every cup, and the quality of its equipment makes it a highly reliable choice for demanding professional use.
- Delivery Capacity:  
Espresso 40ml: 270 cups/h  
Lungo 100ml: 180 cups/h  
Hot Water: 36 L/h

## Construction

- 2 coffee grinders (1 x 1,7 kg & 1 x 1,2 kg coffee hoppers).
- LCD Touchscreen.
- LED lights on body.
- PID (proportional-integral-derivative) Temperature control: a precise controller algorithm system that gives consistency and accuracy to brewing temperature management system.

## Optional Accessories

- Mixed hot water outlet for TANGO ST1 and STP PNC 871020 ☐
- TANGO hotel/breakfast service kit PNC 871022 ☐
- Coffee ground direct discharge chute PNC 871023 ☐

# TANGO ST SOLO 120

## Electric

**Supply voltage:** 400 V/3N ph/50 Hz

**Electrical power, max:** 5.2 kW

**Plug type:** Cable without plug

## Water:

**Cold water temperature (min/max):** 5 / 60 °C

## Key Information:

**Net weight:** 100 kg

**Shipping volume:** 0.69 m<sup>3</sup>

Sustainability

**Current consumption:** 7.5 Amps

## Certifications



The company reserves the right to make modifications to the products without prior notice. All information correct at time of printing.

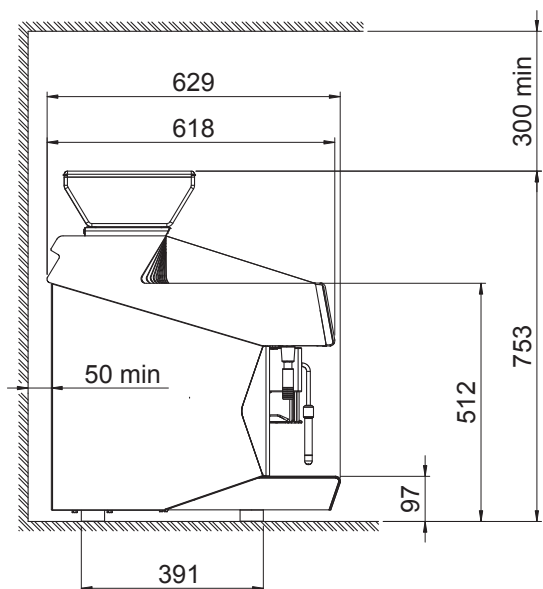
2025.12.19

Part of  Electrolux Professional Group

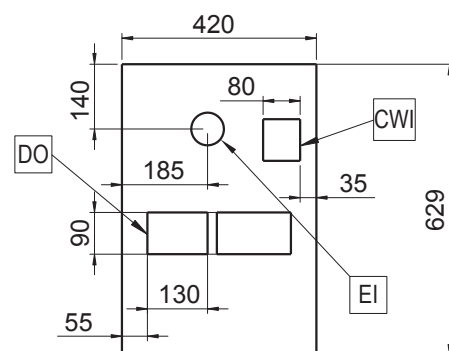
Front



Side



Top



# UNIC