

**Blast Chillers-Freezers CW**  
**Blast Chiller-Freezer Crosswise**  
**6 1/1 - 19,5/15kg (R452A)**

ITEM # \_\_\_\_\_

MODEL # \_\_\_\_\_

NAME # \_\_\_\_\_

SIS # \_\_\_\_\_

AIA # \_\_\_\_\_

**110832 (BCF15A)**Blast chiller & freezer  
19,5/15kg, compatible with  
6x1/1 GN crosswise oven -  
R452A**Short Form Specification****Item No.** \_\_\_\_\_

- Blast chiller/freezer with digital temperature and time display
- For 6 GN 1/1 or 5 600x400 mm trays
- Load capacity: chilling 19,5 kg (UK guidelines); freezing 15 kg (UK guidelines)
- Single sensor core probe
- Operating air temperature: +3 -41°C
- Automatic and manual defrosting
- Blast chilling real residual time estimation (A.R.T.E.)
- Turbo cooling function
- Specific cycles for ice cream
- Evaporator with antirust protection
- HACCP and Service alarms with data logging
- Main components in 304 AISI stainless steel
- Internal rounded corners and drain
- Cyclopentane insulation (HCFC, CFC and HFC free)
- Built-in refrigeration unit
- R452a refrigerant gas (HCFC and CFC free)
- Performance guaranteed at ambient temperatures of 40°C

**APPROVAL:** \_\_\_\_\_

## Main Features

- Hard Chilling (air temperature -20°C).
- All information related to the different operating models are recorded: date, time, cycle, core temperature, holding temperature, HACCP accordance.
- Blast Chilling cycle: 19,5 kg from 90°C up to 3°C in less than 90 minutes.
- Blast Chilling cycle: 10 kg from 90°C up to 3°C in less than 90 minutes.
- Soft Chilling (air temperature -2°C).
- Hard Chilling (air temperature -12°C).
- Turbo cooling: chiller works continuously at the desired temperature; ideal for continuous production.
- Freezing (air temperature -36°C)
- Control unit provides two large displays to read out: time, core temperature, cycle countdown, alarms, service information.
- Two customizable cycles (P1 & P2) for each operating mode, allowing to set the time and air temperature. These programs can be converted into ice-cream specialized cycles (shape maintenance and holding).
- Single sensor core probe as standard.
- Remaining time estimation for probe-driven cycles based on artificial intelligence techniques (ARTE) for an easier planning of the activities.
- Performance guaranteed at ambient temperatures of +40°C.
- Automatic and manual defrosting.

## Construction

- Environmentally friendly: R452a as refrigerant gas.
- Ventilator swinging hinged panel for access to the evaporator for cleaning.
- No water connections required.
- Waste water can be plumbed into drain, but can also be collected in an optional waste container.
- Built-in refrigeration unit.
- Removable magnetic door gasket with hygienic design.

## Sustainability

- Holding at +3 °C for chilling or -36 °C for freezing, automatically activated at the end of each cycle, to save energy and maintain the target temperature (manual activation is also possible).
- High density polyurethane insulation, 60 mm thickness, HCFC free.

## Included Accessories

- 1 of 1 extra single-sensor probe for blast chiller and blast chiller&freezers PNC 880213

## Optional Accessories

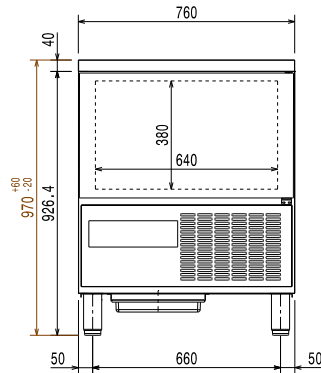
- 1 extra single-sensor probe for blast chiller and blast chiller&freezers PNC 880213
- Pair of 1/1 GN grids in 304 AISI PNC 921101

# Blast Chillers-Freezers CW

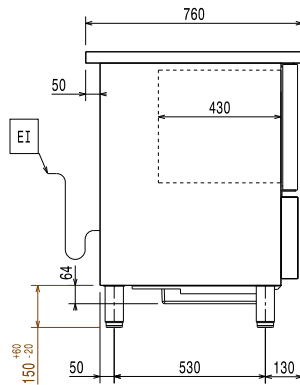
## Blast Chiller-Freezer Crosswise

### 6 1/1 - 19,5/15kg (R452A)

**Front**

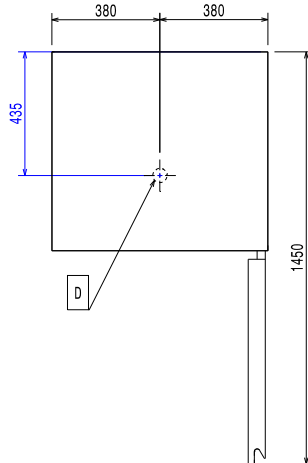


**Side**



EI = Electrical inlet (power)

**Top**



#### Electric

Supply voltage:	220-240 V/1 ph/50 Hz
110832 (BCF15A)	
Electrical power max.:	1.58 kW
Circuit breaker required	

#### Installation:

Clearance:	5 cm on sides and back.
Please see and follow detailed installation instructions provided with the unit	

#### Capacity:

GN:	6 - 1/1 containers
-----	--------------------

#### Key Information:

Door hinges:	Right Side
External dimensions, Width:	760 mm
External dimensions, Depth:	760 mm
External dimensions, Height:	970 mm
Net weight:	105 kg
Shipping weight:	111 kg
Shipping volume:	0.81 m <sup>3</sup>

#### Refrigeration Data

Control type:	Electronic
Refrigeration power at evaporation temperature:	-25 °C

#### Product Information (EN17032 - Commission Regulation EU 2015/1095)

Chilling Cycle Time (+65°C to +10°C):	109 min
Full load capacity (chilling):	30 kg
Freezing Cycle Time (+65°C to -18°C):	259 min
Full load capacity (freezing):	15 kg

#### Sustainability

Refrigerant type:	R452A
GWP Index:	2141
Refrigeration power:	1072 W
Refrigerant weight:	850 g
Energy consumption, cycle (chilling):	0.0991 kWh/kg
Energy consumption, cycle (freezing):	0.3553 kWh/kg

Blast Chillers-Freezers CW  
Blast Chiller-Freezer Crosswise 6 1/1 - 19,5/15kg (R452A)

The company reserves the right to make modifications to the products without prior notice. All information correct at time of printing.