

Blast Chillers-Freezers CW
Blast Chiller-Freezer Crosswise
10 1/1 - 32/28kg (R452A)

ITEM # _____

MODEL # _____

NAME # _____

SIS # _____

AIA # _____

**110833 (BCF28A)**Blast chiller & freezer
32/28kg, compatible with
10x1/1 GN crosswise oven -
R452A**Short Form Specification****Item No.** _____

- Blast chiller/freezer with digital temperature and time display
- For 10 GN 1/1 or 600x400 mm trays
- Load capacity: chilling 32 kg (UK guidelines); freezing 28 kg (UK guidelines)
- Single sensor core probe
- Operating air temperature: +3 -41°C
- Automatic and manual defrosting
- Blast chilling real residual time estimation (A.R.T.E.)
- Turbo cooling function
- Specific cycles for ice cream
- Evaporator with antirust protection
- HACCP and Service alarms with data logging
- Main components in 304 AISI stainless steel
- Internal rounded corners and drain
- Cyclopentane insulation (HCFC, CFC and HFC free)
- Built-in refrigeration unit
- R452a refrigerant gas (HCFC and CFC free)
- Performance guaranteed at ambient temperatures of 40°C

APPROVAL: _____

Main Features

- Blast Chilling cycle: 32 kg from 90°C up to 3°C in less than 90 minutes.
- Hard Chilling (air temperature -20°C).
- Turbo cooling: chiller works continuously at the desired temperature; ideal for continuous production.
- Control unit provides two large displays to read out: time, core temperature, cycle countdown, alarms, service information.
- Two customizable cycles (P1 & P2) for each operating mode, allowing to set the time and air temperature. These programs can be converted into ice-cream specialized cycles (shape maintenance and holding).
- All information related to the different operating models are recorded: date, time, cycle, core temperature, holding temperature, HACCP accordance.
- Single sensor core probe as standard.
- Remaining time estimation for probe-driven cycles based on artificial intelligence techniques (ARTE) for an easier planning of the activities.
- Soft Chilling (air temperature -2°C).
- Freezing (air temperature -36°C)
- Performance guaranteed at ambient temperatures of +40°C.
- Automatic and manual defrosting.

- | | | |
|---|------------|--------------------------|
| • 80mm pitch side hangers for 10 1/1 GN gas oven | PNC 922116 | <input type="checkbox"/> |
| • 60mm pitch side hangers for 10 1/1 GN electric oven | PNC 922121 | <input type="checkbox"/> |
| • 60mm pitch side hangers for 10 1/1 GN gas oven | PNC 922122 | <input type="checkbox"/> |
| • Trolley for 10 2/1 GN roll-in rack | PNC 922128 | <input type="checkbox"/> |
| • Trolley for 10 1/1 GN roll-in rack | PNC 922130 | <input type="checkbox"/> |
| • Kit to convert to 10 1/1 GN roll-in rack | PNC 922201 | <input type="checkbox"/> |

Construction

- Environmentally friendly: R452a as refrigerant gas.
- Main components in 304 AISI stainless steel.
- Ventilator swinging hinged panel for access to the evaporator for cleaning.
- No water connections required.
- Waste water can be plumbed into drain, but can also be collected in an optional waste container.
- Built-in refrigeration unit.
- Removable magnetic door gasket with hygienic design.

Sustainability

- High density polyurethane insulation, 60 mm thickness, HCFC free.
- Holding at +3 °C for chilling or -36 °C for freezing, automatically activated at the end of each cycle, to save energy and maintain the target temperature (manual activation is also possible).

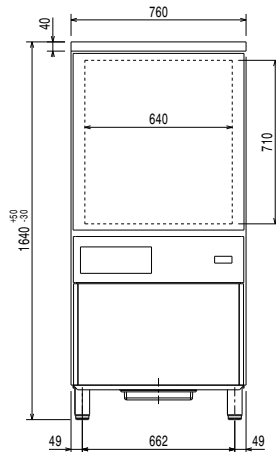
Included Accessories

- 1 of 1 extra single-sensor probe for blast chiller and blast chiller&freezers PNC 880213

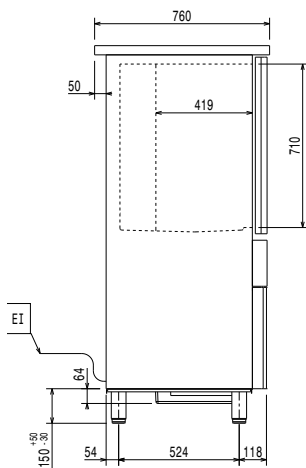
Optional Accessories

- 1 extra single-sensor probe for blast chiller and blast chiller&freezers PNC 880213
- Base for 10 GN 1/1 tray rack support for 28 kg blast chillers and blast chiller/freezers PNC 881518
- Pair of 1/1 GN grids in 304 AISI PNC 921101
- 80mm pitch side hangers for 10 1/1 GN electric oven PNC 922115

Front

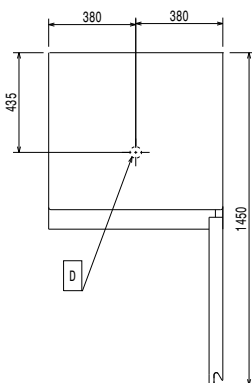


Side



EI = Electrical inlet (power)

Top



Electric

Supply voltage:
110833 (BCF28A) 380-415 V/3N ph/50/60 Hz
Electrical power max.: 2.88 kW
Circuit breaker required

Installation:

Clearance: 5 cm on sides and back.
Please see and follow detailed installation instructions provided with the unit

Capacity:

GN: 10 - 1/1 containers

Key Information:

External dimensions, Width: 760 mm
External dimensions, Depth: 760 mm
External dimensions, Height: 1640 mm
Net weight: 133.45 kg
Shipping weight: 157 kg
Shipping volume: 1.3 m³

Refrigeration Data

Control type: Electronic
Refrigeration power at evaporation temperature: -30 °C

Product Information (EN17032 – Commission Regulation EU 2015/1095)

Chilling Cycle Time (+65°C to +10°C): 112 min
Full load capacity (chilling): 40 kg
Freezing Cycle Time (+65°C to -18°C): 270 min
Full load capacity (freezing): 25 kg

Sustainability

Refrigerant type: R452A
GWP Index: 2141
Refrigeration power: 1464 W
Refrigerant weight: 1500 g
Energy consumption, cycle (chilling): 0.095 kWh/kg
Energy consumption, cycle (freezing): 0.288 kWh/kg