

Blast Chillers-Freezers CW

Blast Chiller-Freezer Crosswise

10 2/1- 64/56kg (R452A)

ITEM # _____

MODEL # _____

NAME # _____

SIS # _____

AIA # _____

**110834 (BCF64HA)**Blast chiller & freezer
64/56kg, compatible with
10x2/1 GN crosswise oven -
R452A

Short Form Specification

Item No.

- Blast chiller/freezer with digital temperature and time display
- For 10 GN 2/1 or 600x400 mm trays
- Load capacity: chilling 56 kg (UK guidelines); freezing 64 kg (UK guidelines)
- Single sensor core probe
- Operating air temperature: +3 -41°C
- Automatic and manual defrosting
- Blast chilling real residual time estimation (A.R.T.E.)
- Turbo cooling function
- Specific cycles for ice cream
- Evaporator with antirust protection
- HACCP and Service alarms with data logging
- Main components in 304 AISI stainless steel
- Internal rounded corners and drain
- Cyclopentane insulation (HCFC, CFC and HFC free)
- Built-in refrigeration unit
- R452a refrigerant gas (HCFC and CFC free)
- Performance guaranteed at ambient temperatures of 40°C

Main Features

- Soft Chilling (air temperature -2°C).
- Hard Chilling (air temperature -20°C).
- Turbo cooling: chiller works continuously at the desired temperature; ideal for continuous production.
- Control unit provides two large displays to read out: time, core temperature, cycle countdown, alarms, service information.
- All information related to the different operating models are recorded: date, time, cycle, core temperature, holding temperature, HACCP accordance.
- Two customizable cycles (P1 & P2) for each operating mode, allowing to set the time and air temperature. These programs can be converted into ice-cream specialized cycles (shape maintenance and holding).
- Single sensor core probe as standard.
- Control unit provides several operating settings (programmable parameters): time/core temperature according to NF and UK regulations, time/air temperature/probe personalized according to national regulations, 3 single sensor or 3-sensor temperature probes (as accessory), ideal for meats, automatic defrosting and manual defrosting.
- Remaining time estimation for probe-driven cycles based on artificial intelligence techniques (ARTE) for an easier planning of the activities.
- Freezing (air temperature -36°C)
- Performance guaranteed at ambient temperatures of +40°C.
- Blast Chilling cycle: 56 kg from 90°C up to 3°C in less than 90 minutes.
- Hard Chilling (air temperature -12°C).
- Automatic and manual defrosting.

Construction

- Internal and external finishing in 304 AISI stainless steel and backpanel in galvanized steel.
- Main components in 304 AISI stainless steel.
- Developed and produced in ISO 9001 and ISO 14001 certified factory.
- Inner cell with fully rounded corners.
- Ventilator swinging hinged panel for access to the evaporator for cleaning.
- No water connections required.
- Waste water can be plumbed into drain, but can also be collected in an optional waste container.
- Environmentally friendly: R452a as refrigerant gas.
- Built-in refrigeration unit.
- Removable magnetic door gasket with hygienic design.

Sustainability

- High density polyurethane insulation, 60 mm thickness, HCFC free.
- Holding at +3 °C for chilling or -22 °C for freezing, automatically activated at the end of each cycle, to save energy and maintain the target temperature (manual activation is also possible).

APPROVAL: _____

Included Accessories

- 1 of 1 extra single-sensor probe for blast chiller and blast chiller&freezers PNC 880213

Optional Accessories

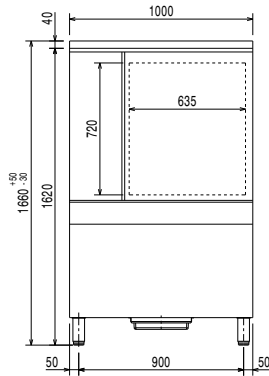
- SLIDE-IN RACK SUPP. BCF CW 56KG 10 GN2/1 PNC 880075
- 1 extra single-sensor probe for blast chiller and blast chiller&freezers PNC 880213
- 80mm pitch side hangers for 10 2/1 GN oven PNC 922117
- 60mm pitch side hangers for 10 2/1 GN oven PNC 922123
- Trolley for 10 2/1 GN roll-in rack PNC 922128
- Kit to convert to 10 2/1 GN roll-in rack PNC 922202

Blast Chillers-Freezers CW

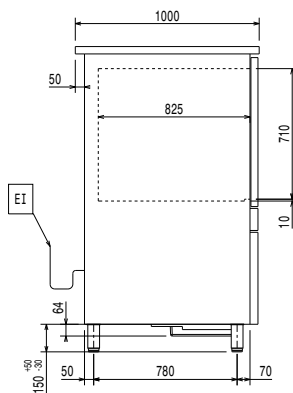
Blast Chiller-Freezer Crosswise

10 2/1- 64/56kg (R452A)

Front

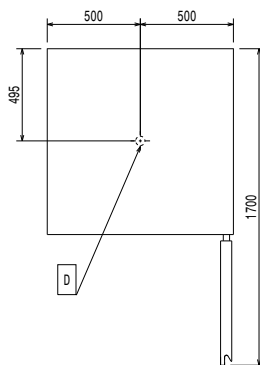


Side



D = Drain
EI = Electrical inlet (power)

Top



Electric

Supply voltage:

110834 (BCF64HA) 380-415 V/3N ph/50 Hz

Electrical power max.:

3.38 kW

Circuit breaker required

Installation:

Clearance: 5 cm on sides and back.

Please see and follow detailed installation instructions provided with the unit

Capacity:

GN: 20 - 1/1 containers

Key Information:

External dimensions, Width: 1000 mm
External dimensions, Depth: 1010 mm
External dimensions, Height: 1640 mm
Net weight: 235 kg
Shipping weight: 257 kg
Shipping volume: 1.92 m³

Refrigeration Data

Refrigeration power at evaporation temperature: -30 °C

Product Information (EN17032 – Commission Regulation EU 2015/1095)

Chilling Cycle Time (+65°C to +10°C): 120 min
Full load capacity (chilling): 80 kg
Freezing Cycle Time (+65°C to -18°C): 248 min
Full load capacity (freezing): 40 kg

Sustainability

Refrigerant type: R452A
GWP Index: 2141
Refrigeration power: 2540 W
Refrigerant weight: 3700 g
Energy consumption, cycle (chilling): 0.076 kWh/kg
Energy consumption, cycle (freezing): 0.27 kWh/kg

Blast Chillers-Freezers CW
Blast Chiller-Freezer Crosswise 10 2/1- 64/56kg (R452A)

The company reserves the right to make modifications to the products without prior notice. All information correct at time of printing.