

Magistar Combi DS Electric Combi Oven 6GN2/1

ITEM # _____

MODEL # _____

NAME # _____

SIS # _____

AIA # _____

**218831 (ZCOE62B2S0)**

Magistar Combi DS combi boiler oven with digital control, 6x2/1GN, electric, programmable, automatic cleaning, boiler in AISI304 (Australia)

Short Form Specification

Item No. _____

Combi oven with high resolution full touch screen interface, multilanguage

- Built-in steam generator with real humidity control based upon Lambda Sensor
- AirFlow air distribution system to achieve maximum performance with 7 fan speed levels
- HP Automatic Cleaning: Automatic and built-in self cleaning system with integrated descale of the steam generator. 5 automatic cycles (soft, medium, strong, extra strong, rinse-only) and economizer functions to save energy, water, detergent and rinse aid
- Cooking modes: Automatic (9 food families with 100+ different pre-installed variants); Programs (a maximum of 1000 recipes can be stored and organized in 16 different categories); Manual (steam, combi and convection cycles); Specialistic Cycles (regeneration, Low Temperature Cooking, proving, EcoDelta, Sous-Vide, Static-Combi, Pasteurization of pasta, dehydration, Food Safe Control and Advanced Food Safe Control)
- Special functions: MultiTimer cooking, Cooking Optimizer to cut running costs, Make-it-Mine to customize interface, SoloMio to customize homepage, agenda Calendar, automatic backup mode to avoid downtime
- USB port to download HACCP data, programs and settings. Connectivity ready
- 6-point multi sensor core temperature probe
- Double glass door with LED lights
- Stainless steel construction throughout
- Supplied with n.1 tray rack 2/1 GN, 67 mm pitch.

Main Features

- Built-in steam generator for highly precise humidity and temperature control according to the chosen settings.
- Real humidity control based upon Lambda Sensor to automatically recognize quantity and size of food for consistent quality results.
- Dry, hot convection cycle (25 °C - 300 °C): ideal for low humidity cooking.
- Combination cycle (25 °C - 300 °C): combining convected heat and steam to obtain humidity controlled cooking environment, accelerating the cooking process and reducing weight loss.
- Low temperature Steam cycle (25 °C - 99 °C): ideal for sous-vide, re-thermalization and delicate cooking. Steam cycle (100 °C): seafood and vegetables. High temperature steam (101 °C - 130 °C).
- EcoDelta cooking: cooking with food probe maintaining preset temperature difference between the core of the food and the cooking chamber.
- Pre-set program for Regeneration, ideal for banqueting on plate or rethermalizing on tray.
- Programs mode: a maximum of 100 recipes can be stored in the oven's memory, to recreate the exact same recipe at any time. 4-step cooking programs also available.
- AirFlow air distribution system to achieve maximum performance in chilling/heating evenness and temperature control thanks to a special design of the chamber combined with high precision variable speed fan.
- Fan with 5 speed levels from 300 to 1500 RPM and reverse rotation for optimal evenness. Fan stops in less than 5 seconds when door is opened.
- Single sensor core temperature probe included.
- Automatic fast cool down and pre-heat function.
- HP Automatic Cleaning: Automatic and built-in self cleaning system with integrated descale of the steam generator. 5 automatic cycles (soft, medium, strong, extra strong, rinse-only).
- Grease Collector: predisposed for integrated grease drain and collection for safer operation (dedicated base as optional accessory).
- Back-up mode with self-diagnosis is automatically activated if a failure occurs to avoid downtime.
- 2 different chemical options available: solid and liquid (requires optional accessory).
- Capacity: 6 GN 2/1 or 12 GN 1/1 trays.
- [NOT TRANSLATED]

Construction

- Double thermo-glazed door with open frame construction, for cool outside door panel. Swing hinged easy-release inner glass on door for easy cleaning.
- Seamless hygienic internal chamber with all rounded corners for easy cleaning.
- 304 AISI stainless steel construction throughout.
- Front access to control board for easy service.
- IPX 5 spray water protection certification for easy cleaning.

APPROVAL: _____

- Supplied with n.1 tray rack 2/1 GN, 67 mm pitch.

User Interface & Data Management

- Digital interface with LED backlight buttons with guided selection.
- USB port to download HACCP data, share cooking programs and configurations. USB port also allows to plug-in sous-vide probe (optional accessory).
- Connectivity ready for real time access to connected appliances from remote and HACCP monitoring (requires optional accessory).

Sustainability

- Reduced power function for customized slow cooking cycles.

Optional Accessories

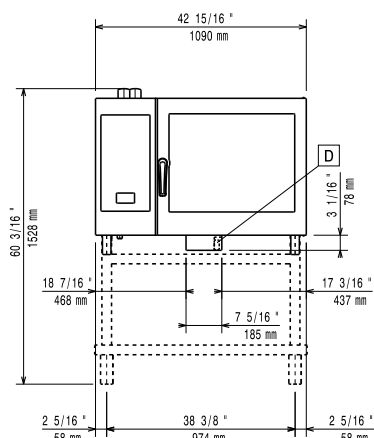
- Wheel kit for 6 & 10 GN 1/1 and 2/1 GN oven base (not for the disassembled one) PNC 922003 ☐
- Pair of AISI 304 stainless steel grids, GN 1/1 PNC 922017 ☐
- Pair of grids for whole chicken (8 per grid - 1,2kg each), GN 1/1 PNC 922036 ☐
- AISI 304 stainless steel grid, GN 1/1 PNC 922062 ☐
- AISI 304 stainless steel grid, GN 2/1 PNC 922076 ☐
- External side spray unit (needs to be mounted outside and includes support to be mounted on the oven) PNC 922171 ☐
- Pair of AISI 304 stainless steel grids, GN 2/1 PNC 922175 ☐
- Baking tray for 5 baguettes in perforated aluminum with silicon coating, 400x600x38mm PNC 922189 ☐
- Baking tray with 4 edges in perforated aluminum, 400x600x20mm PNC 922190 ☐
- Baking tray with 4 edges in aluminum, 400x600x20mm PNC 922191 ☐
- Pair of frying baskets PNC 922239 ☐
- AISI 304 stainless steel bakery/pastry grid 400x600mm PNC 922264 ☐
- Double-step door opening kit PNC 922265 ☐
- Grid for whole chicken (8 per grid - 1,2kg each), GN 1/1 PNC 922266 ☐
- Kit universal skewer rack and 6 short skewers for Lengthwise GN 2/1 and Crosswise ovens PNC 922325 ☐
- Universal skewer rack PNC 922326 ☐
- 6 short skewers PNC 922328 ☐
- Smoker for lengthwise and crosswise oven (4 kinds of smoker wood chips are available on request) PNC 922338 ☐
- Multipurpose hook PNC 922348 ☐
- 4 flanged feet for 6 & 10 GN, 2", 100-130mm PNC 922351 ☐
- Grease collection tray, GN 2/1, H=60 mm PNC 922357 ☐
- Grid for whole duck (8 per grid - 1,8kg each), GN 1/1 PNC 922362 ☐
- Tray support for 6 & 10 GN 2/1 disassembled open base PNC 922384 ☐
- Wall mounted detergent tank holder PNC 922386 ☐
- USB SINGLE POINT PROBE PNC 922390 ☐

- Slide-in rack with handle for 6 & 10 GN 2/1 oven PNC 922605 ☐
- Tray rack with wheels, 5 GN 2/1, 80mm pitch PNC 922611 ☐
- Open base with tray support for 6 & 10 GN 2/1 oven PNC 922613 ☐
- Cupboard base with tray support for 6 & 10 GN 2/1 oven PNC 922616 ☐
- Hot cupboard base with tray support for 6 & 10 GN 2/1 oven holding GN 1/1 or 400x600mm PNC 922617 ☐
- External connection kit for detergent and rinse aid PNC 922618 ☐
- Stacking kit for electric 6 GN 2/1 oven placed on electric 10 GN 2/1 oven PNC 922621 ☐
- Trolley for slide-in rack for 6 & 10 GN 2/1 oven and blast chiller freezer PNC 922627 ☐
- Trolley for mobile rack for 2 stacked 6 GN 2/1 ovens on riser PNC 922629 ☐
- Trolley for mobile rack for 6 GN 2/1 on 6 or 10 GN 2/1 ovens PNC 922631 ☐
- Riser on feet for stacked 2x6 GN 1/1 ovens PNC 922633 ☐
- Riser on wheels for stacked 2x6 GN 2/1 ovens, height 250mm PNC 922634 ☐
- Stainless steel drain kit for 6 & 10 GN oven, dia=50mm PNC 922636 ☐
- Plastic drain kit for 6 & 10 GN oven, dia=50mm PNC 922637 ☐
- Trolley with 2 tanks for grease collection PNC 922638 ☐
- Grease collection kit for open base (2 tanks, open/close device and drain) PNC 922639 ☐
- Wall support for 6 GN 2/1 oven PNC 922644 ☐
- Dehydration tray, GN 1/1, H=20mm PNC 922651 ☐
- Flat dehydration tray, GN 1/1 PNC 922652 ☐
- Open base for 6 & 10 GN 2/1 oven, disassembled PNC 922654 ☐
- Heat shield for 6 GN 2/1 oven PNC 922665 ☐
- Heat shield-stacked for ovens 6 GN 2/1 on 6 GN 2/1 PNC 922666 ☐
- Heat shield-stacked for ovens 6 GN 2/1 on 10 GN 2/1 PNC 922667 ☐
- Fixed tray rack, 5 GN 2/1, 85mm pitch PNC 922681 ☐
- Kit to fix oven to the wall PNC 922687 ☐
- 4 high adjustable feet for 6 & 10 GN ovens, 100-115MM PNC 922688 ☐
- Tray support for 6 & 10 GN 2/1 open base PNC 922692 ☐
- Detergent tank holder for open base PNC 922699 ☐
- Tray rack with wheels, 6 GN 2/1, 65mm pitch (included) PNC 922700 ☐
- Mesh grilling grid PNC 922713 ☐
- Probe holder for liquids PNC 922714 ☐
- Odourless hood with fan for 6 & 10 GN 2/1 electric ovens PNC 922719 ☐
- Condensation hood with fan for 6 & 10 GN 2/1 electric oven PNC 922724 ☐
- 4 high adjustable feet for 6 & 10 GN ovens, 230-290mm PNC 922745 ☐
- Tray for traditional static cooking, H=100mm PNC 922746 ☐
- Double-face griddle, one side ribbed and one side smooth, 400x600mm PNC 922747 ☐

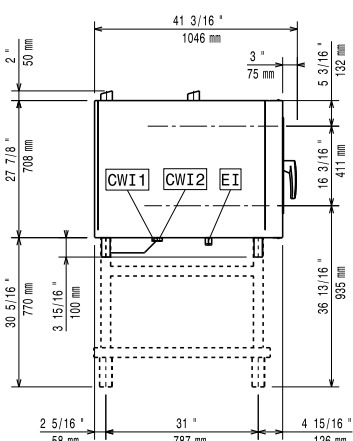
- TROLLEY FOR GREASE COLLECTION KIT PNC 922752 ☐
- Water inlet pressure reducer PNC 922773 ☐
- KIT FOR INSTALLATION OF ELECTRIC POWER PEAK MANAGEMENT SYSTEM-6-10 GN OVENS PNC 922774 ☐
- Non-stick universal pan, GN 1/1, H=20mm PNC 925000 ☐
- Non-stick universal pan, GN 1/1, H=40mm PNC 925001 ☐
- Non-stick universal pan, GN 1/1, H=60mm PNC 925002 ☐
- Double-face griddle, one side ribbed and one side smooth, GN 1/1 PNC 925003 ☐
- Aluminum grill, GN 1/1 PNC 925004 ☐
- Frying pan for 8 eggs, pancakes, hamburgers, GN 1/1 PNC 925005 ☐
- Flat baking tray with 2 edges, GN 1/1 PNC 925006 ☐
- Potato baker for 28 potatoes, GN 1/1 PNC 925008 ☐
- Compatibility kit for installation on previous base GN 2/1 PNC 930218 ☐

Magistar Combi DS Electric Combi Oven 6GN2/1

Front

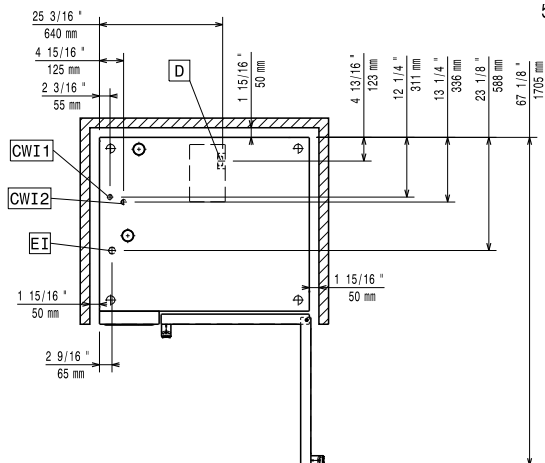


Side



C- = Cold Water inlet 1 **EI** = Electrical inlet (power)
WI-1
C- = Cold Water Inlet 2
WI-2
D = Drain
DO = Overflow drain pipe

Top 5!



Electric

Circuit breaker required

Supply voltage:	400-430 V/3N ph/50-60 Hz
Electrical power max.:	22.3 kW
Electrical power, default:	21.4 kW

Water:

Max inlet water supply temperature: 30 °C

Water inlet "FCW" connection: 3/4"

Pressure, bar min/max: 1-6 bar

Chlorides: <45 ppm

Conductivity: >50 $\mu\text{S}/\text{cm}$

Drain "D": 50mm

Electrolux Professional recommends the use of treated water, based on testing of specific water conditions.

Please refer to user manual for detailed water quality information.

Installation:

Clearance: Clearance: 5 cm rear and right hand sides.

Suggested clearance for service access: 50 cm left hand side.

Capacity:

GN: 6 (GN 2/1)

Max load capacity: 60 kg

Key Information:

Door hinges: Right Side

External dimensions,
Width: 1090 mm

External dimensions,
Depth: 971 mm

**External dimensions,
Height:** 808 mm

Weight: 162.5 kg

Net weight: 162.5 kg

Shipping weight: 185.5 kg

Shipping volume: 1.27 m³