

## Modular Cooking Range Line EVO700 One Well Electric Fryer Top 12 liter

ITEM # \_\_\_\_\_

MODEL # \_\_\_\_\_

NAME # \_\_\_\_\_

SIS # \_\_\_\_\_

AIA # \_\_\_\_\_

**372079 (Z7FRED1E00)**

12-lt electric fryer top with 1 well and 1 basket (internal heating elements)

**372142 (Z7FRED1E0N)**

12-lt electric fryer top with 1 well and 1 basket (internal heating elements)

### Short Form Specification

#### Item No. \_\_\_\_\_

To be installed on open base installations, bridging supports or cantilever systems. High efficiency tilting incoloy armoured heating elements (8.7kW) placed inside the well. Deep drawn well. Oil drains through a tap on the front. Exterior panels in stainless steel with Scotch Brite finish. One piece pressed work top in 1.5 mm thick stainless steel. Right-angled side edges to allow flush-fitting junction between units.

### Main Features

- Unit to be mounted on open base cupboards, bridging supports or cantilever systems.
- Thermostatic regulation of oil temperature up to a maximum of 185 °C.
- Overheat protection thermostat as standard on all units.
- Oil drains through a tap positioned on the front the well.
- All major compartments located in front of unit for ease of maintenance.
- IPX 4 water protection.
- Incoloy armoured heating elements located inside the well can be lifted up for easier cleaning.
- Optional portable oil quality monitoring tool (code 9B8081) for efficient oil management.
- Suitable for countertop installation.

### Construction

- All exterior panels in Stainless Steel with Scotch Brite finishing.
- One piece pressed 1.5 mm work top in Stainless steel.
- Model has right-angled side edges to allow flush fitting joints between units, eliminating gaps and possible dirt traps.
- Interior of well with rounded corners for ease of cleaning.

APPROVAL: \_\_\_\_\_

## Included Accessories

- 1 of Basket for 12lt electric fryer tops PNC 921629

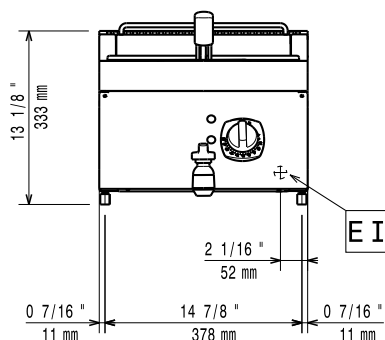
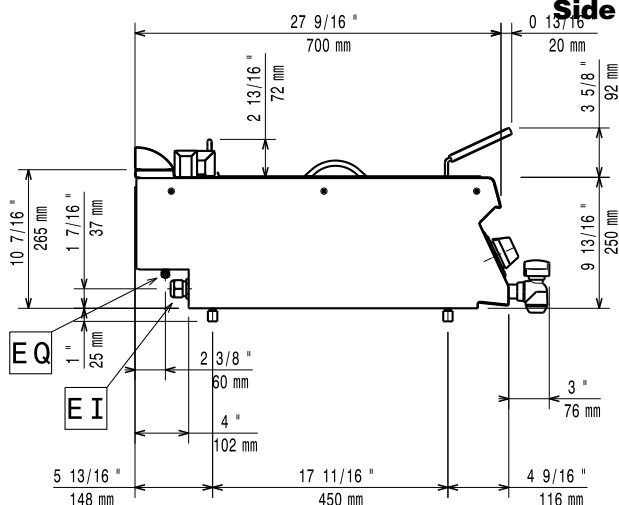
## Optional Accessories

- Junction sealing kit PNC 206086 ☐
- Support for bridge type installation, 800 mm PNC 206137 ☐
- Support for bridge type installation, 1000 mm PNC 206138 ☐
- Support for bridge type installation, 1200 mm PNC 206139 ☐
- Support for bridge type installation, 1400 mm PNC 206140 ☐
- Support for bridge type installation, 1600 mm PNC 206141 ☐
- Support for bridge type installation, 400 mm PNC 206154 ☐
- Frontal handrail 400 mm PNC 206166 ☐
- Frontal handrail 800 mm PNC 206167 ☐
- Large handrail (portioning shelf) 400 mm PNC 206185 ☐
- Large handrail (portioning shelf) 800 mm PNC 206186 ☐
- Frontal handrail 1200 mm PNC 206191 ☐
- Frontal handrail 1600 mm PNC 206192 ☐
- Right and left side handrails PNC 206240 ☐
- Chimney upstand, 400 mm PNC 206303 ☐
- 2 side covering panels, height 250 mm, depth 700 mm PNC 206320 ☐
- Chimney grid net, 400mm PNC 206400 ☐
- Basket for 12lt electric fryer tops PNC 921629 ☐

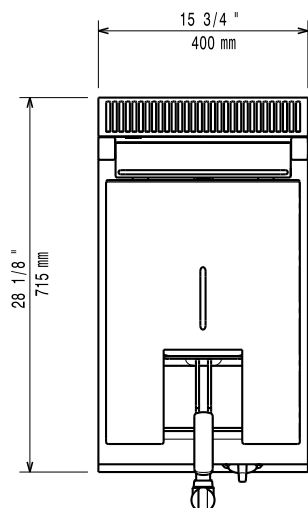
# Modular Cooking Range Line

## EVO700 One Well Electric

### Fryer Top 12 liter

**Front**

**Side**


EI = Electrical inlet (power)  
 EQ = Equipotential screw

**Top**


### Electric

#### Supply voltage:

372079 (Z7FRED1E00)	380-400 V/3N ph/50/60 Hz
372142 (Z7FRED1E0N)	230 V/3 ph/50/60 Hz

#### Total Watts:

8.7 kW

### Key Information:

Usable well dimensions (width):	240 mm
Usable well dimensions (height):	235 mm
Usable well dimensions (depth):	420 mm
Well capacity:	10 lt MIN; 12 lt MAX
Thermostat Range:	105 °C MIN; 185 °C MAX
Net weight:	25 kg
Shipping weight:	
372079 (Z7FRED1E00)	29 kg
372142 (Z7FRED1E0N)	32 kg
Shipping height:	
372079 (Z7FRED1E00)	520 mm
372142 (Z7FRED1E0N)	540 mm
Shipping width:	460 mm
Shipping depth:	820 mm
Shipping volume:	0.2 m <sup>3</sup>

If appliance is set up or next to or against temperature sensitive furniture or similar, a safety gap of approximately 150 mm should be maintained or some form of heat insulation fitted.

#### [NOT TRANSLATED]

372079 (Z7FRED1E00)	EF17112
372142 (Z7FRED1E0N)	N7FE2