

## Modular Cooking Range Line EVO700 One Well Freestanding Electric Fryer 14 liter

ITEM # \_\_\_\_\_

MODEL # \_\_\_\_\_

NAME # \_\_\_\_\_

SIS # \_\_\_\_\_

AIA # \_\_\_\_\_

**372084 (Z7FRED1FF0)**14-lt electric fryer with 1 well  
and 1 basket (internal heating  
elements) - free standing

### Short Form Specification

#### Item No. \_\_\_\_\_

To be installed on height adjustable feet in stainless steel. High efficiency tilting incoloy armoured heating elements (8.7kW) placed inside the well. Deep drawn well. Oil drains through a tap into a container under the well. Exterior panels in stainless steel with Scotch Brite finish. One piece pressed work top in 1.5 mm thick stainless steel. Right-angled side edges to allow flush-fitting junction between units.

### Main Features

- Unit to be mounted on height adjustable feet in stainless steel.
- Thermostatic regulation of oil temperature up to a maximum of 185 °C.
- Overheat protection thermostat as standard on all units.
- Oil drains through a tap into a drainage container positioned under the well.
- All major compartments located in front of unit for ease of maintenance.
- IPX 4 water protection.
- Incoloy armoured heating elements located inside the well can be lifted up for easier cleaning.
- Optional portable oil quality monitoring tool (code 9B8081) for efficient oil management.

### Construction

- Interior of well with rounded corners for ease of cleaning.
- All exterior panels in Stainless Steel with Scotch Brite finishing.
- One piece pressed 1.5 mm work top in Stainless steel.
- Model has right-angled side edges to allow flush fitting joints between units, eliminating gaps and possible dirt traps.

### Sustainability

- [NOT TRANSLATED]

APPROVAL: \_\_\_\_\_

### Included Accessories

- 1 of Door for open base cupboard PNC 206342
- 1 of Basket for 14 and 15lt fryers PNC 921691

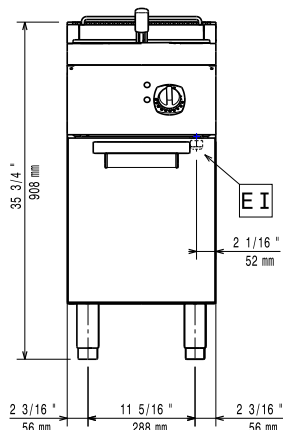
### Optional Accessories

- Junction sealing kit PNC 206086 ☐
- Flanged feet kit PNC 206136 ☐
- Frontal kicking strip for concrete installation, 400 mm PNC 206147 ☐
- Frontal kicking strip for concrete installation, 800 mm PNC 206148 ☐
- Frontal kicking strip for concrete installation, 1000 mm PNC 206150 ☐
- Frontal kicking strip for concrete installation, 1200 mm PNC 206151 ☐
- Frontal kicking strip for concrete installation, 1600 mm PNC 206152 ☐
- Frontal handrail 400 mm PNC 206166 ☐
- Frontal handrail 800 mm PNC 206167 ☐
- Frontal kicking strip, 400 mm PNC 206175 ☐
- Frontal kicking strip, 800 mm PNC 206176 ☐
- Frontal kicking strip, 1000 mm PNC 206177 ☐
- Frontal kicking strip, 1200 mm PNC 206178 ☐
- Frontal kicking strip, 1600 mm PNC 206179 ☐
- Large handrail (portioning shelf) 400 mm PNC 206185 ☐
- Large handrail (portioning shelf) 800 mm PNC 206186 ☐
- Frontal handrail 1200 mm PNC 206191 ☐
- Frontal handrail 1600 mm PNC 206192 ☐
- 4 feet for concrete installation (not for 900 line freestanding grill) PNC 206210 ☐
- Right and left side handrails PNC 206240 ☐
- Pair of side kicking strips PNC 206249 ☐
- Pair of side kicking strips (concrete installation) PNC 206265 ☐
- Chimney upstand, 400 mm PNC 206303 ☐
- 2 side covering panels, height 700 mm, depth 700 mm PNC 206319 ☐
- Door for open base cupboard PNC 206342 ☐
- Base support for feet or wheels - 400mm (EVO700/900) PNC 206366 ☐
- Base support for feet or wheels - 800mm (EVO700/900) PNC 206367 ☐
- Base support for feet or wheels - 1200mm (EVO700/EVO900) PNC 206368 ☐
- Base support for feet or wheels - 1600mm (EVO700/900) PNC 206369 ☐
- Rear paneling - 600mm (EVO700/900) PNC 206373 ☐
- Rear paneling - 800mm (EVO700/900) PNC 206374 ☐
- Rear paneling - 1000mm (EVO700/900) PNC 206375 ☐
- Rear paneling - 1200mm (EVO700/900) PNC 206376 ☐
- Chimney grid net, 400mm PNC 206400 ☐

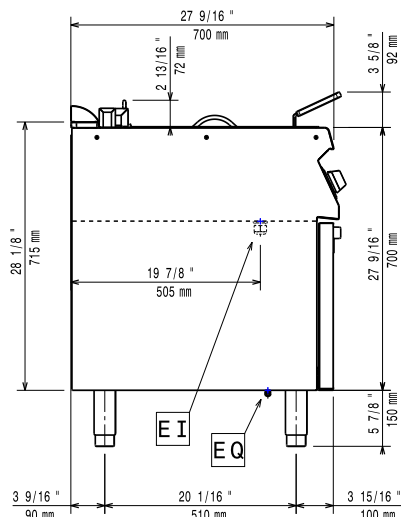
- Base support for feet/wheels (600mm) PNC 206431 ☐
- Basket for 14 and 15lt fryers PNC 921691 ☐
- 2 half size baskets for 14 and 15lt fryers PNC 921692 ☐
- Filter for fryer oil collection basin for 7lt, 14lt, 15lt free standing fryers PNC 921693 ☐

# Modular Cooking Range Line EVO700 One Well Freestanding Electric Fryer 14 liter

## Front

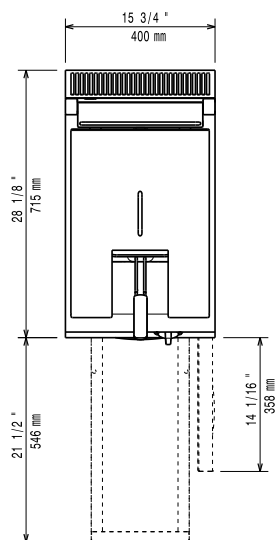


## Side



EI = Electrical inlet (power)  
EQ = Equipotential screw

## Top



## Electric

Supply voltage:	380-400 V/3N ph/50/60 Hz
Predisposed for:	380-400V 3N~ 50/60Hz
Total Watts:	7,9-8,7kW
	8.7 kW

## Key Information:

If appliance is set up or next to or against temperature sensitive furniture or similar, a safety gap of approximately 150 mm should be maintained or some form of heat insulation fitted.

Usable well dimensions (width):	240 mm
Usable well dimensions (height):	285 mm
Usable well dimensions (depth):	380 mm
Well capacity:	12 lt MIN; 14 lt MAX
Thermostat Range:	105 °C MIN; 185 °C MAX
Net weight:	35 kg
Shipping weight:	46 kg
Shipping height:	1140 mm
Shipping width:	460 mm
Shipping depth:	820 mm
Shipping volume:	0.43 m³
[NOT TRANSLATED]	EF17114