

Modular Cooking Range Line EVO700 6-Hot Plates Electric Boiling Top Range

ITEM # _____

MODEL # _____

NAME # _____

SIS # _____

AIA # _____



372019 (Z7ECEL6R00)

6-hot plate (2,6 kW each)
electric boiling top

Short Form Specification

Item No. _____

To be installed on open base installations, bridging supports or cantilever systems. Six 2.6 kW cast-iron hot plates hermetically sealed to the one-piece top. Exterior panels in stainless steel with Scotch Brite finish. One piece pressed work top in 1.5 mm thick stainless steel. Right-angled side edges to allow flush-fitting junction between units.

Main Features

- Unit to be mounted on open base cupboards, bridging supports or cantilever systems.
- The six 2.6kW cast-iron plates are hermetically sealed to the one-piece top.
- The special design of the control knob system guarantees against water infiltration.
- IPX 4 water protection.
- Suitable for countertop installation.

Construction

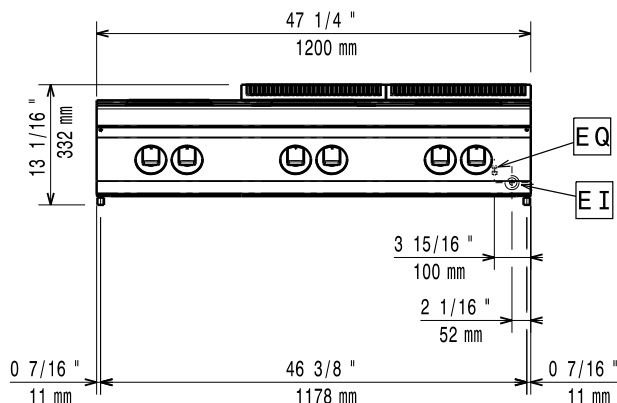
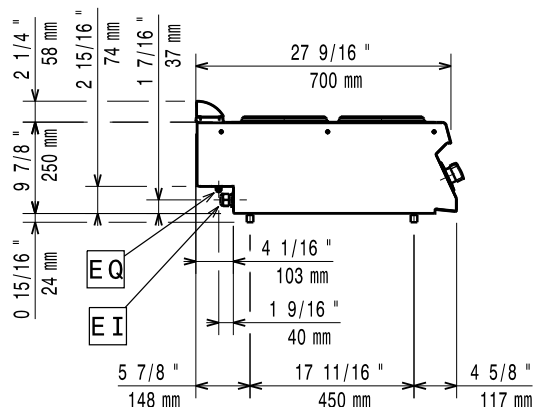
- All exterior panels in Stainless Steel with Scotch Brite finishing.
- One piece pressed 1.5 mm work top in Stainless steel.
- Model has right-angled side edges to allow flush fitting joints between units, eliminating gaps and possible dirt traps.

APPROVAL: _____

Optional Accessories

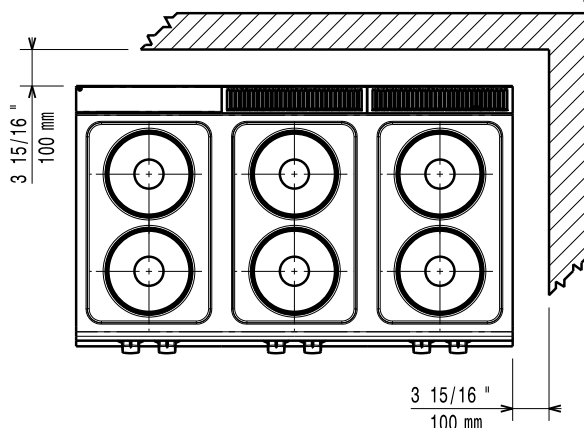
- Support for bridge type installation, 1200 mm PNC 206139 ☐
- Support for bridge type installation, 1400 mm PNC 206140 ☐
- Support for bridge type installation, 1600 mm PNC 206141 ☐
- Frontal handrail 1200 mm PNC 206191 ☐
- Frontal handrail 1600 mm PNC 206192 ☐
- Right and left side handrails PNC 206240 ☐
- Water column with swivel arm (water column extension not included) PNC 206289 ☐
- Water column extension PNC 206291 ☐
- Chimney upstand, 800 mm PNC 206304 ☐
- 2 side covering panels, height 250 mm, depth 700 mm PNC 206320 ☐
- Chimney grid net, 400mm PNC 206400 ☐

Modular Cooking Range Line EVO700 6-Hot Plates Electric Boiling Top Range

Front

Side


EQ = Equipotential screw

EI = Electrical inlet (power)

Top


Electric

Supply voltage: 380-400 V/3 ph/50-60 Hz

Predisposed for:

Total Watts: 15.6 kW

Key Information:

If appliance is set up or next to or against temperature sensitive furniture or similar, a safety gap of approximately 150 mm should be maintained or some form of heat insulation fitted.

Net weight: 60 kg

Shipping weight: 55 kg

Shipping height: 540 mm

Shipping width: 830 mm

Shipping depth: 1300 mm

Shipping volume: 0.58 m³

[NOT TRANSLATED]

Front Plates Power: 2.6 - 2.6 kW

Back Plates Power: 2.6 - 2.6 kW

Front Plates dimensions: Ø 230 Ø 230

Back Plates dimensions: Ø 230 Ø 230