

Warewashing Remote pre-wash zone with cord conveyor

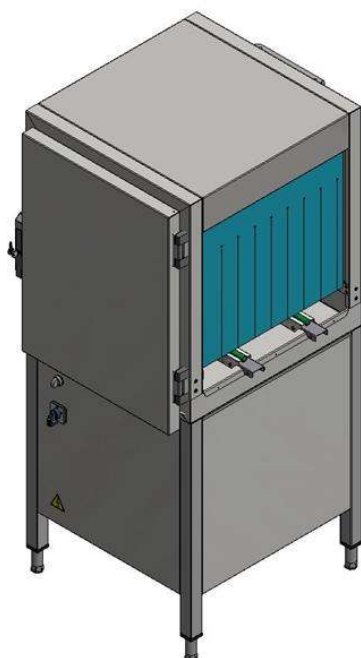
ITEM # _____

MODEL # _____

NAME # _____

SIS # _____

AIA # _____

**510501 (RPMWC)**Remote prewash module, with
cord conveyor

Short Form Specification

Item No.

Unit to be Electrolux medium pre-wash module suitable to be installed with Electrolux green&clean rack type dishwasher and handling system. Electrical characteristics to be ___ 230V single phase operation. The unit is installed as part of the handling system and fully operate in synchronization with the rack type dishwasher to optimize the dishwashing layout without affecting the performance. The pre-wash section uses only cold water providing to upper and lower arms so food remains are not "baked" onto the plates in order to have better pre-wash performance. The baskets pass automatically through the pre-wash zone with a cord conveyor system. Auto-start/stop reduces both water, energy consumption and noise. Deep drawn tank with fully rounded corners, sloped towards the drain provides fast drainage. Hinged door is easy to access to the interior of the door and tank for easy cleaning and the insulation in the door offers silent operation and heat preservation. Suitable for any feeding direction of the dishwasher thanks to easy reversibility on-site. Full pre-arrangement to be connected with Electrolux handling system without any modification. Unit has separate power connection and operation control.

Main Features

- Designed to be connected between Electrolux Professional green&clean rack type dishwasher and motorized handling system.
- Deep drawn pressed tank with fully rounded corners, sloped towards the drain to prevent dirt build-up, provides fast drainage in just a few minutes. With no welding points the pressed tank offers a guaranteed water tight solution.
- The unit is installed as part of the motorized handling system and fully operates in synchronization with the rack type dishwasher.
- Separated pre-wash module reduces the risk of foaming in the rack type dishwasher.
- Pre-wash section uses cold water so food remains are not "baked" onto the plates in order to have better pre-wash performance.
- The baskets pass automatically through the pre-wash zone with a cord conveyor system.
- The remote installation as a part of the handling system outside of the rack type dishwasher to optimize the dishwashing layout without affecting the performance.
- Full accessibility to the interior of the module and all internal components can be easily removed for cleaning thanks to the hinged door.
- The feeding direction can be either left to right or right to left as it's reversible on site.
- Unit has separate operation control while power and signal connection can be taken from the rack type.
- Adjustable feet for full access underneath the machine for cleaning.

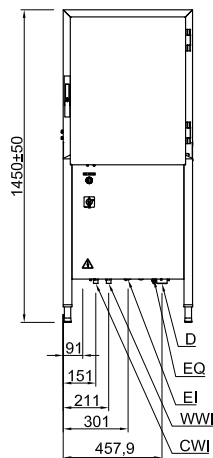
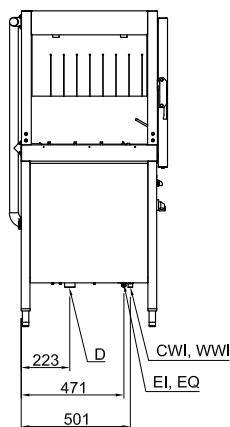
Construction

- All main components made in heavy duty anti-corrosive 304 type stainless steel: internal chamber, external, front and side panels, pre-wash arms and door.
- Door is insulated with injected foam. This adds strength as well as reduces noise and heat loss.
- Curtains equipped in both entrance and exit avoid water splashing out.

Sustainability

- Manual process of pre-wash spraying replaced by automatic pre-wash module.
- Simple operation control panel.
- Auto-start/stop ensures that the zone runs only when a rack is passing through it. This reduces both water, energy consumption and noise.

APPROVAL: _____

Front

Side


CWI = Cold Water Inlet

D = Drain

EI = Electrical inlet (power)

EO = Electrical Outlet

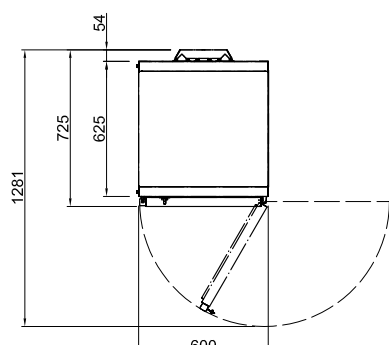
EQ = Equipotential screw

ES = Electrical signal IN/OUT

HWI = Hot water inlet

U = USB port

WI = Water inlet

Top


Electric

Supply voltage: 220-230 V/1N ph/50 Hz

Default Installed Power: 0.9 kW

Pre-wash pump size: 0.73 kW

Water:

Pre-wash tank size:

Key Information:

Height with door open: 1450 mm

Charging hole size (width): 530 mm

External dimensions, Width: 600 mm

External dimensions, Depth: 726 mm

External dimensions, Height: 1450 mm

Charging hole size (height): 465 mm

Net weight: 93.5 kg

Shipping weight: 98 kg

Shipping height: 1600 mm

Shipping width: 850 mm

Shipping depth: 730 mm

Shipping volume: 0.99 m³

Pre-wash temperature: 30 - 50 °C

Sustainability

Noise level: <70 dBA