



### 341016 (D04H3)

Drop-in tempered glass top (3 GN container capacity)

## Main Features

- Electronic overheating protection.
- CB and CE certified by a third party notified body.
- Designed to be positioned in flush installation providing improved cleanability and suitable for modern design installations.
- Precise temperature control and setting at 0,1°C .
- As standard the product comes with digitally controlled thermostat which is in line of HACCP norms and provides visual alarm as a warning of the increasing or decreasing temperatures.
- Available drop-in dimensions: 1, 2, 3, 4, 5, 6 GN.
- Designed to serve the food in plates, casseroles, pans
- It comes with stylish black coloured tempered heated glass with integrated etched foil elements and stainless steel framed.
- Special design etched foil heating elements to maximize heat transmission on the surface for having the same temperature on the whole surface.
- Ideal for elegant buffet to display warm food, such as pizza, bun, etc. thanks to the extended surface top.
- Food introduced at the correct temperature maintains its core temperature according to Afnor Standards.

## Construction

- IPx4 water protection.
- Electronic control with temperature display.
- AISI 304 Stainless steel frame with rounded corners to facilitate cleaning operations
- Heating elements connected to the bottom include safety thermostat

## Recommended Detergents

PNC Code	Description
OS2881	S01 STAINLESS STEEL SURFACE POLISHER; 6 BOTTLES X 750ML C/T
OS2883	S03 ALCOHOL BASE DETERGENT; 6 BOTTLES X 750ML; ADR&IMDG&IATA Limited Quantity
OS2884	S04 GLASSES & HARD SURFACES CLEANERS; 6 BOTTLES X 750ML
OS3257	S05 - MULTIPURPOSE DEGREASER; 6PCS X 750ML; ADR&IMDG Limited Quantity



# Technical specifications

## Electric

Supply voltage:	220-240 V/1N ph/50/60 Hz
Electrical power max.:	0.9 kW

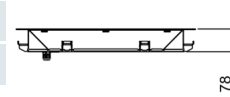
## Key Information:

External dimensions, Width:	1100 mm
External dimensions, Depth:	620 mm
External dimensions, Height:	80 mm
Net weight:	20.4 kg
Shipping weight:	42 kg
Shipping height:	200 mm
Shipping width:	660 mm
Shipping depth:	1140 mm
Shipping volume:	0.15 m <sup>3</sup>
Set temperature:	+105 / +115 °C

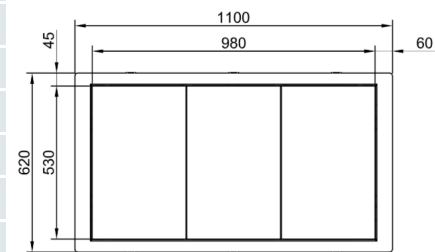
## Sustainability

Noise level:	0 dBA
--------------	-------

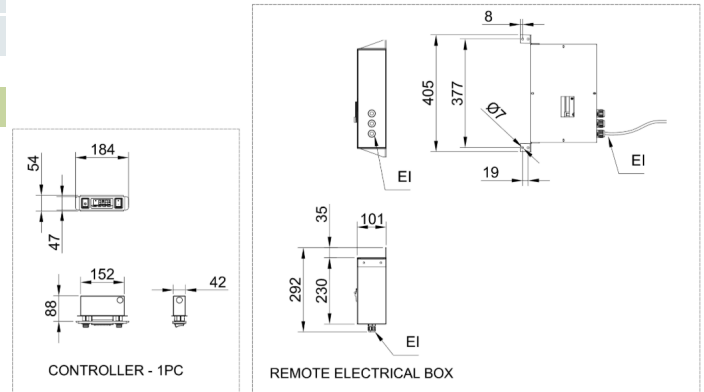
Side



Top



Other



EI = Electrical inlet (power)

ED = Remote electrical connection

RI = Refrigerant Inlet



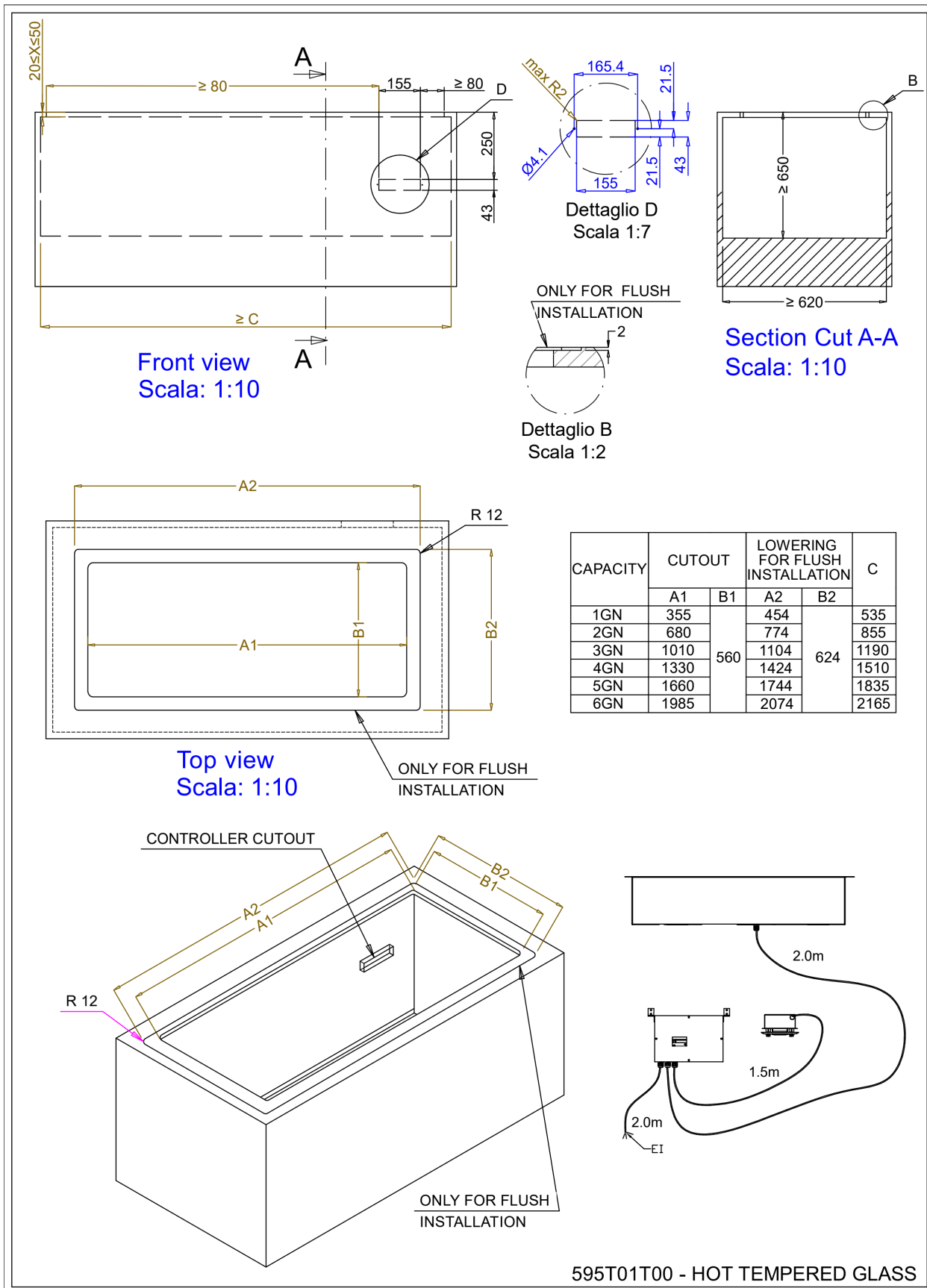
Find out more:  
ISO Certificates  
Electrolux Professional Recognitions

The company reserves the right to make modifications to the products without prior notice. All information correct at time of printing.

2026/04/11

2/3

# Technical specifications



Find out more:  
ISO Certificates  
Electrolux Professional Recognitions

The company reserves the right to make modifications to the products without prior notice. All information correct at time of printing.

2026/04/11

3/3