



391297 (E9BSGHDR40)

150-lt gas Boiling Pan, direct heating

Main Features

- Appliance is IPX5 water resistance certified.
- Discharge tube and tap are very easy to clean from outside.
- Ergonomic: the depth of the vessel facilitates stirring the food, also the most delicate food.
- Large capacity food tap enables safe and effortless discharging of contents.
- No overshooting of cooking temperatures, fast reaction.
- Round kettle is suitable to cook, sauté or poach all kinds of produce.
- Smooth large surfaces, easy access for cleaning.
- Solenoid valve to refill with hot and cold water.
- The special design of the control knob system guarantees against water infiltration.
- Energy regulation through a control knob.
- Produce is uniformly heated in the base and side walls of the kettle by a direct heating system.

Construction

- Model has right-angled side edges to allow flush fitting joints between units, eliminating gaps and possible dirt traps.
- Robust burners in stainless steel with flame failure device, protected pilot light and optimized combustion.
- Pressed cooking vessel in 316L AISI Stainless steel.
- All exterior panels in Stainless Steel with Scotch Brite finishing.

Sustainability

- Firmly fitting cover to reduce cooking time and save energy costs.



Optional Accessories

PNC Code	Description
Baskets	
925019	2-section universal basket for 150lt boiling pans
Chimney upstands	
206132	Draught diverter, 150 mm diameter
206133	Matching ring for flue condenser, 150 mm diameter
206246	Flue condenser for 1 module, 150 mm diameter
206304	Chimney upstand, 800mm
Feet, wheels and ramps	
206135	Kit 4 wheels - 2 swivelling with brake - it is mandatory to install Base support and wheels
206136	Flanged feet kit
206210	Kit 4 feet for concrete installation (not for 900 line free standing grill)
Installation solutions	
206086	Junction sealing kit
Kicking strips	
206148	Frontal kicking strip for concrete installation, 800mm
206150	Frontal kicking strip for concrete installation, 1000mm
206151	Frontal kicking strip for concrete installation, 1200mm
206152	Frontal kicking strip for concrete installation, 1600mm
206157	Pair of side kicking strips for concrete installation
206176	Frontal kicking strip, 800mm (not for refr-freezer base)
206177	Frontal kicking strip, 1000mm (not for refr-freezer base)
206178	Frontal kicking strip, 1200mm (not for refr-freezer base)
206179	Frontal kicking strip, 1600mm (not for refr-freezer base)
206180	Pair of side kicking strips (not for refr-freezer base)
Measuring rods	
927002	Measuring rod for 150 l Boiling Pan
Other accessories	
927225	Pressure regulator for gas units
Panels	
206181	2 panels for service duct for single installation
206202	2 panels for service duct for back to back installation
216134	2 side covering panels for free standing appliances



Technical specifications

Electric

Supply voltage:	220-230 V/1 ph/60 Hz
Total Watts:	0.1 kW

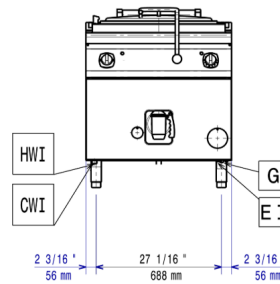
Gas

Gas Power:	24 kW
Standard gas delivery:	Natural Gas G20 (20mbar)
Gas Type Option:	LPG; Natural Gas
Gas Inlet:	1/2"

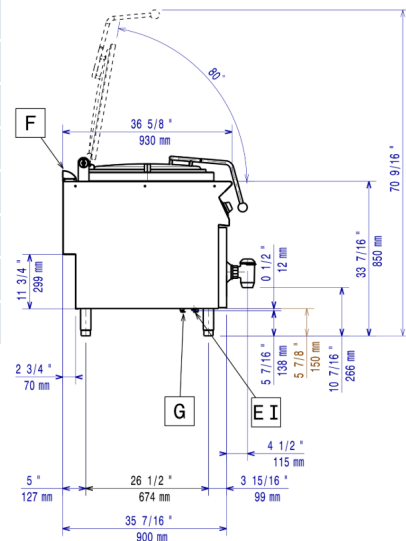
Key Information:

Pan useful capacity:	143 liter
Vessel (round) diameter:	600 mm
Net weight:	135 kg
Shipping weight:	112 kg
Shipping height:	1220 mm
Shipping width:	1140 mm
Shipping depth:	860 mm
Shipping volume:	1.2 m ³
Certification group:	N9PDG

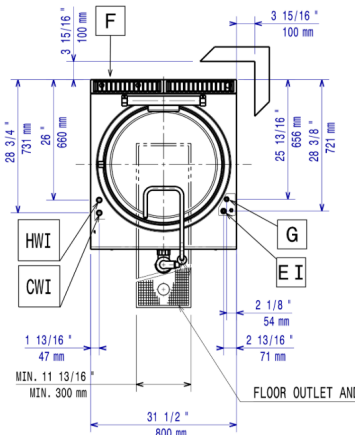
Front



Side



Top



CWI1 = Cold Water inlet 1 (cleaning)

D = Drain

G = Gas connection

EI = Electrical inlet (power)

HWI = Hot water inlet



Find out more:
ISO Certificates
Electrolux Professional Recognitions

The company reserves the right to make modifications to the products without prior notice. All information correct at time of printing.

24/02/2026

3/3