



511062 (TW12SRCB)

Tray washer with condensing Unit, autostart/stop and drying zone, steam right, 1200 trays/h

Main Features

- Wash and rinse arms can be easily removed for cleaning.
- Electric or steam heated and in left or right feeding versions.
- Power wash zone where all the soil is removed.
- Final rinse where the clean water is reused to eliminate any trace of detergent.
- Drying zone for fast and efficient drying.
- Deep strainer boxes covers the entire width of the machine.
- Built-in boiler to increase the temperature of the final rinse water.
- Variable speed control from 7-14 m/min which give a 600 to 1200 trays/h washing capacity.
- Simple service from the front.
- Simple control panel.
- Automatic start/stop function to switch off the machine when not in use.

Construction

- Exterior finish in AISI 304 stainless steel for easy cleaning.
- All models in range are finished in top quality materials to aid durability.
- Automatic controlled dishwashing.
- Automatic unloading to lowerator.
- Automatic loading of trays from an Electrolux Professional tray conveyor.
- Lowerator station for two lowerators (option).
- Large counter balanced doors for easy access to washing and drying zones.
- Large counter balanced and double skinned doors with safety device and easy to grip handle for easy access to washing and drying zones.
- Features a tray buffer containing up to 10 trays and as an option, the trays can also be unloaded in an unloading station made of two lowerators used alternatively.
- Only one cable for electrical connection.
- Wash tank in 316 AISI acid proof stainless steel with rounded corners and sloping base to facilitate cleaning.





A focus on sustainability

Sustainability

- Built-in condensing unit allows to use the steam generated from the machine to heat-up the incoming cold water, decreasing the temperature and humidity of the hot steam outlet as well as reducing water, energy and detergent consumption.

Certifications & Recognitions



Product assessed by the manufacturer and deemed to meet EU safety, health, and environmental protection requirements.



Find out more:
[ISO Certificates](#)
[Electrolux Professional Recognitions](#)

The company reserves the right to make modifications to the products without prior notice. All information correct at time of printing.

2026/03/24

2/4

Technical specifications

Water:

Water supply - operation:	10-15 °C
Water supply (temp hot/cold):	50 °C

Capacity:

N° of speeds:	
---------------	--

Key Information:

Air emission:	500 m³/h
External dimensions, Width:	2980 mm
External dimensions, Depth:	824 mm
External dimensions, Height:	1914 mm
Height with door open:	2050 mm
Net weight:	520 kg
Speed min/max:	14 m/max - 7 m/min
1st wash tank capacity:	114 liters
1st wash pump power:	3.0 kW
1st wash temperature:	- °C
Rinsing temperature:	80-90 °C
Rinsing boiler capacity:	16 liter

Steam

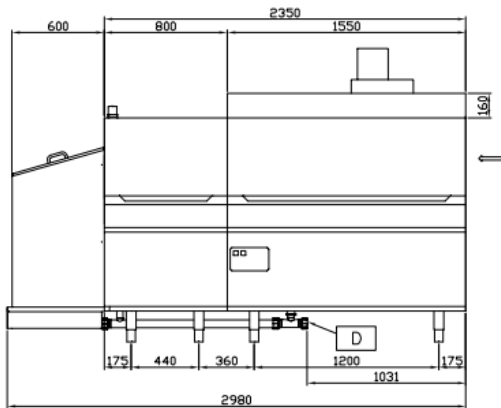
Steam consumption peak:	34 kg/h
-------------------------	---------

Sustainability

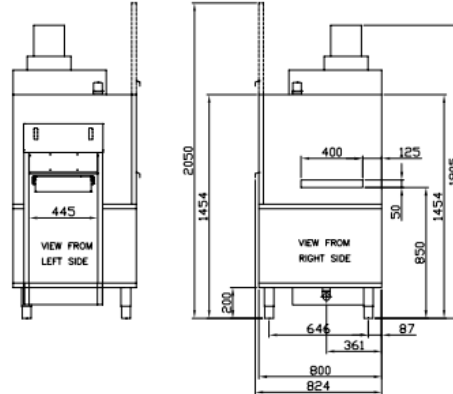
Rinsing water consumption (per cycle):	300 lt
--	--------

Installation drawings

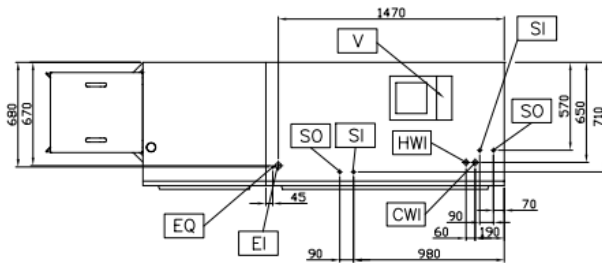
Front



Side



Top



D = Drain

HWI = Hot water inlet

EQ = Equipotential screw

EO = Electrical Outlet

U = USB port

EI = Electrical inlet (power)

XP = Chemical probe/sensor

SO = Steam outlet

CWI = Cold Water Inlet

ES = Electrical signal IN/OUT