

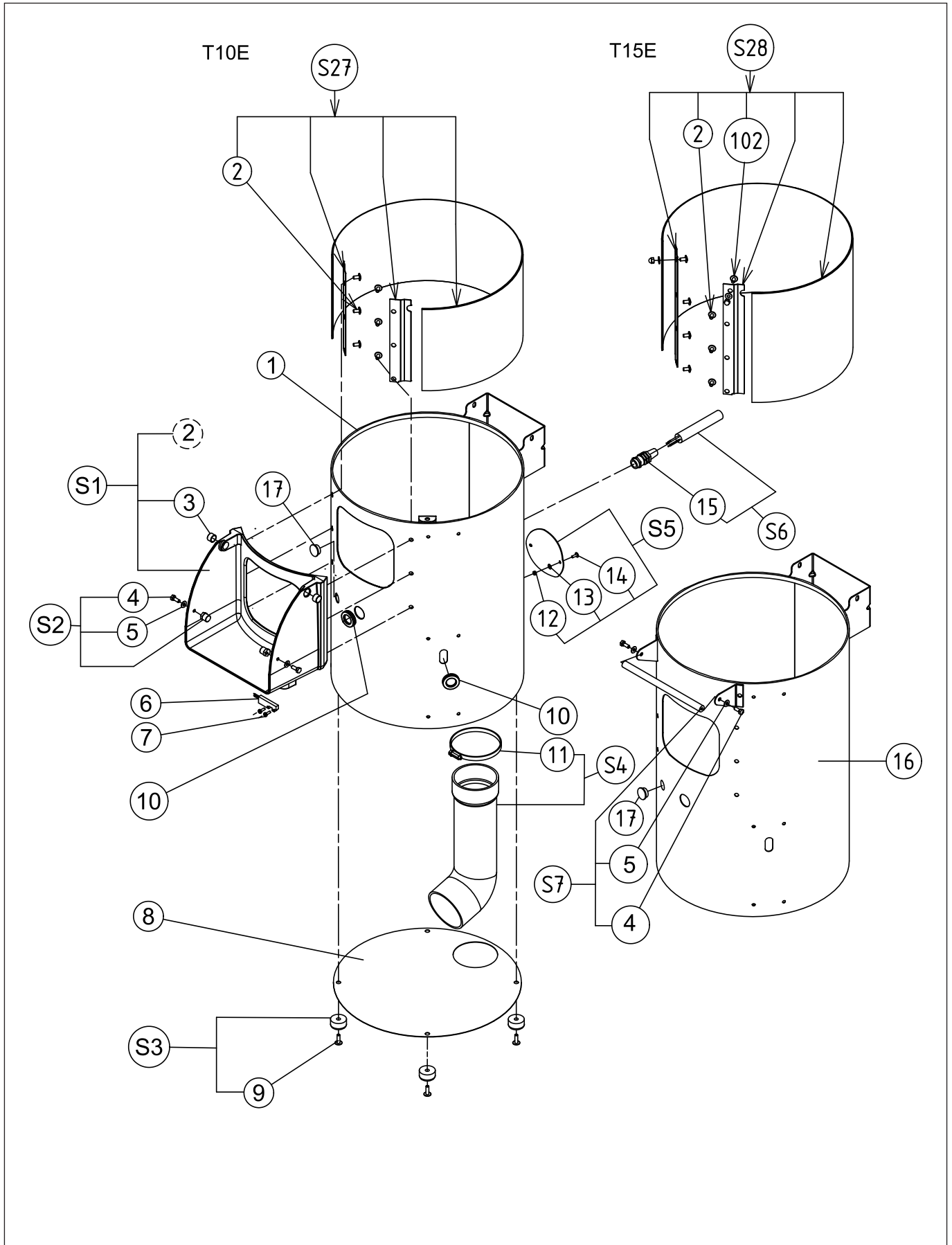
T10E / T15E

PNC	Model	Modules	Description	Note
601805	T10E	B;C;G;H	VEGETABLE PEELER - ABRASIVE PLATE - 10KG - 200-440V 50/60HZ -	
603269	T10E	B;C;G	VEGETABLE PEELER - 10KG - 200-440V 50/60HZ -	
603340	T10E	B;C;G;H;I	VEGETABLE PEELER - ABRASIVE PLATE - ABRASIF CYLINDER - 10KG - 200-440V 50/60HZ	
603510	T10E	A;C;G;H	VEGETABLE PEELER - ABRASIVE PLATE - 10KG - 200-440V 50/60HZ	
603514	T10E	A;C;G;H;I	VEGETABLE PEELER - ABRASIVE PLATE - ABRASIF CYLINDER - 10KG - 200-440V 50/60HZ	
601792	T10E	A;C;F;H;J	VEGETABLE PEELER - ABRASIVE PLATE - 10KG - 220-240V 50/60HZ - SCHUKO PLUG	
603339	T10E	B;C;F;H;I;J	VEGETABLE PEELER - ABRASIVE PLATE - ABRASIF CYLINDER - 10KG - 220-240V 50/60HZ - SCHUKO PLUG	
603509	T10E	A;C;F;H;J	VEGETABLE PEELER - ABRASIVE PLATE - 10KG - 220-240V 50/60HZ - SCHUKO PLUG	
603513	T10E	A;C;F;H;I;J	VEGETABLE PEELER - ABRASIVE PLATE - ABRASIF CYLINDER - 10KG - 220-240V 50/60HZ - SCHUKO PLUG	
600296	T10E	B;C;E;H;J	VEGETABLE PEELER - ABRASIVE PLATE - 10KG - 100-120V 60HZ - MARINE - SCHUKO PLUG	
601903	T15E	B;D;G;H	VEGETABLE PEELER - ABRASIVE PLATE - 15KG - 200-440V 50/60HZ	
603342	T15E	B;D;G;H;I	VEGETABLE PEELER - ABRASIVE PLATE - ABRASIF CYLINDER - 15KG - 200-440V 50/60HZ	
603512	T15E	A;D;G;H	VEGETABLE PEELER - ABRASIVE PLATE - 15KG - 200-440V 50/60HZ	
603516	T15E	A;D;G;H;I	VEGETABLE PEELER - ABRASIVE PLATE - ABRASIF CYLINDER - 15KG - 200-440V 50/60HZ	
600872	T15E	B;D;G;K	VEGETABLE PEELER - 15KG - 200-440V 50/60HZ - WITHOUT ABRASIVE PLATE	
601900	T15E	B;D;F;H	VEGETABLE PEELER - ABRASIVE PLATE - 15KG - 220-240V 50/60HZ	
603341	T15E	B;D;F;H;I;J	VEGETABLE PEELER - ABRASIVE PLATE - ABRASIF CYLINDER - 15KG - 220-240V 50/60HZ - SCHUKO PLUG	
603511	T15E	A;D;F;H;J	VEGETABLE PEELER - ABRASIVE PLATE - 15KG - 220-240V 50/60HZ - SCHUKO PLUG	
603515	T15E	A;D;F;H;I;J	VEGETABLE PEELER - ABRASIVE PLATE - ABRASIF CYLINDER - 15KG - 220-240V 50/60HZ - SCHUKO PLUG	

T10E / T15E**Modules classifications**

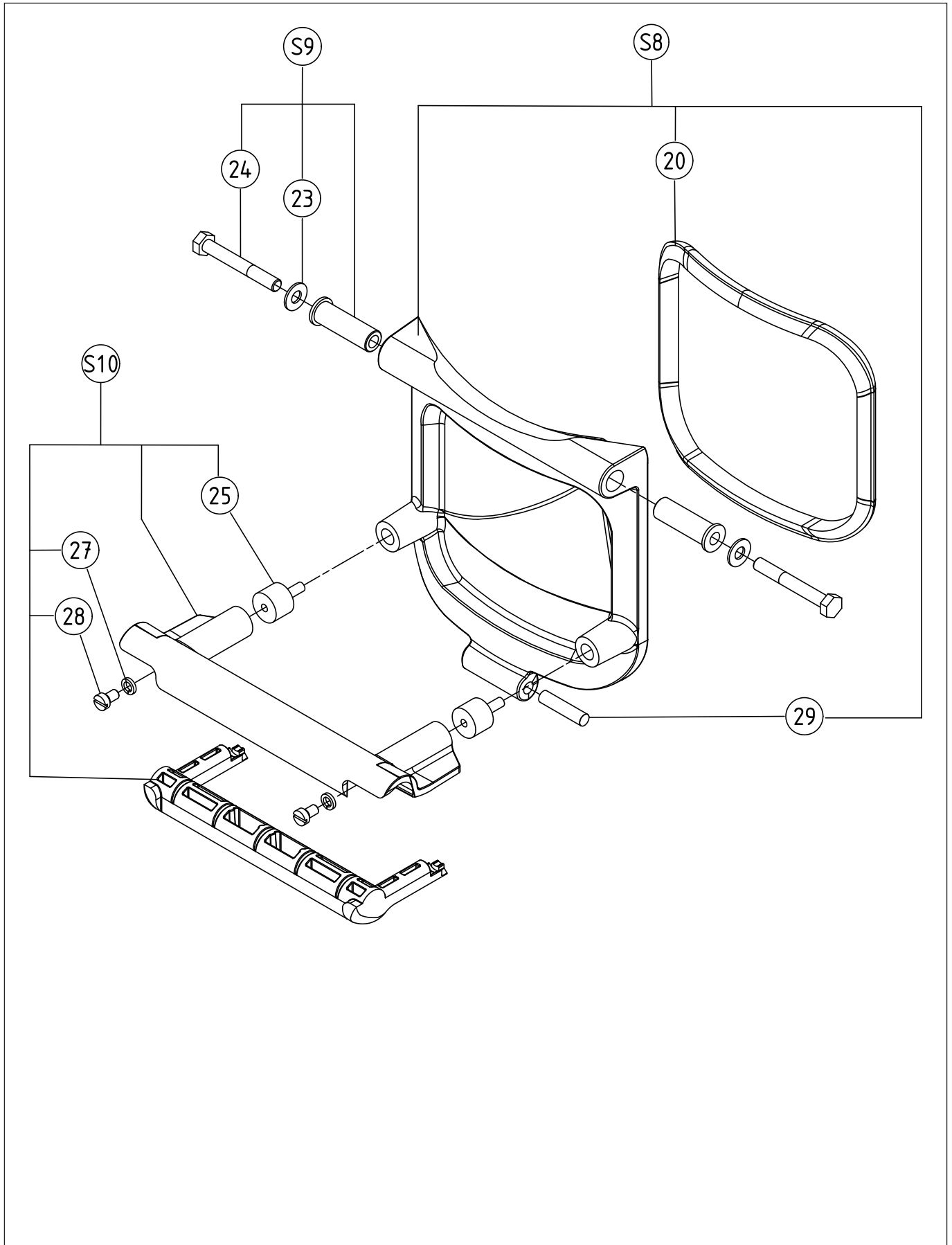
A	DITO SAMA
B	ELECTROLUX PROFESSIONAL
C	10 KG
D	15 KG
E	100-120V 60HZ
F	220-240V 50/60HZ
G	380-440V 50/60HZ
H	ABRASIVE PLATE
I	ABRASIF CYLINDER
J	CE SCHUKO
K	WITHOUT ABRASIVE PLATE

Pag.	Index
4	Exploded view - Shell
5	Parts list - Shell
6	Exploded view - Door
7	Parts list - Door
8	Exploded view - Mechanism
9	Parts list - Mechanism
10	Exploded view - Motor
11	Parts list - Motor
12	Exploded view - Lid
13	Parts list - Lid
14	Exploded view - Power card
15	Parts list - Power card
16	Exploded view - Control unit
17	Parts list - Control unit



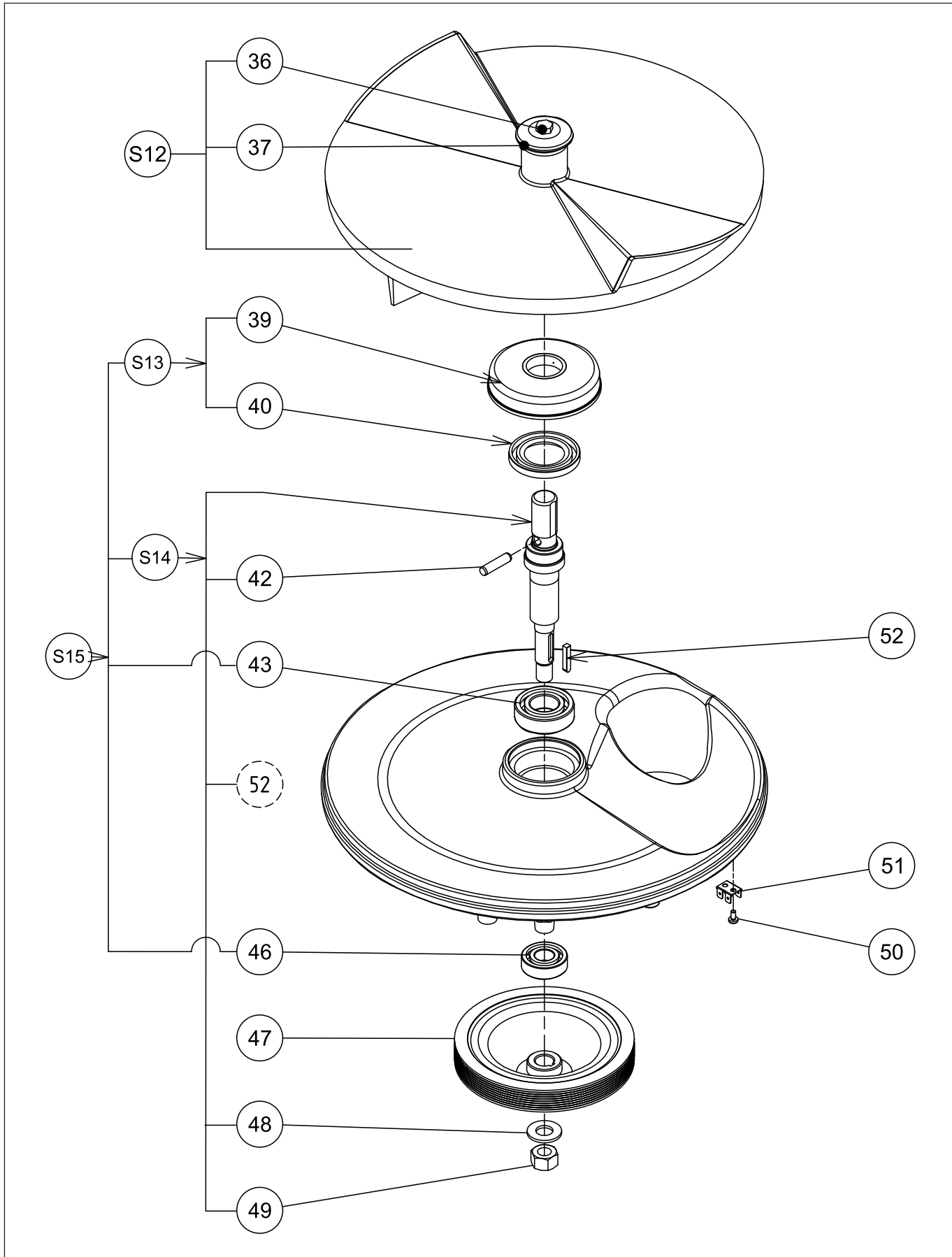
T10E / T15E - Parts list - Shell

Pos.	Code	Description	V	W&T	Ref.	Notes	S/N break
1	0D5587	T10E shell assembly					
2	0D1017	Screw TRL M6x16 (set x 10)					
3	0D1007	Bearing bushing 14x16x10 (set x 5)					
4	0D0499	Screw TH M6x16 (set x 10)					
5	0D0624	Washer CS M6 (set x 10)					
6	0DF018	Door safety device assembly					
7	0D6724	Screw CX M4x10 (set x 10)					
8	0D5269	Case plate assembly					
9	0U0237	Screw RL M6x20 (set x 10)					
10	0D3031	Grommet (set x10)					
11	0D2891	80-100 collar (set x 5)					
12	0KL159	Nut HU M4 (set x 10)					
13	0D0631	Washer CS M4 (set x 10)					
14	0D0532	Screw TRL M4X12 (set x 10)					
15	0D2073	Stuffing gland assembly					
16	0D5609	T15E shell assembly					
17	0D0892	GPN300 F 181 cap (set x 4)					
102	0D0601	Screw TRL M6x12 (set x 10)					
102	0D0624	Washer CS M6 (set x 10)					
102	0D0583	Nut cap M6 (set x 10)					
S1	0D5610	Chute assembly/t10-t15E					
S2	0D1605	Locking spindle assembly (set x 2)					
S3	0D5224	Foot assembly (set x4)					
S4	0U0406	Flexible pipe + collar		X			
S5	0D2608	Cap assembly					
S6	0D2667	Three-phase power lead assembly		X	G		
S6	0D5196	Single phase power lead assembly		X	F		
S7	0D5270	Lid closing spindle assembly					
S27	0D5738	T10E abrasive assembly		X	C		
S28	0D5739	T15E abrasive assembly		X	D		



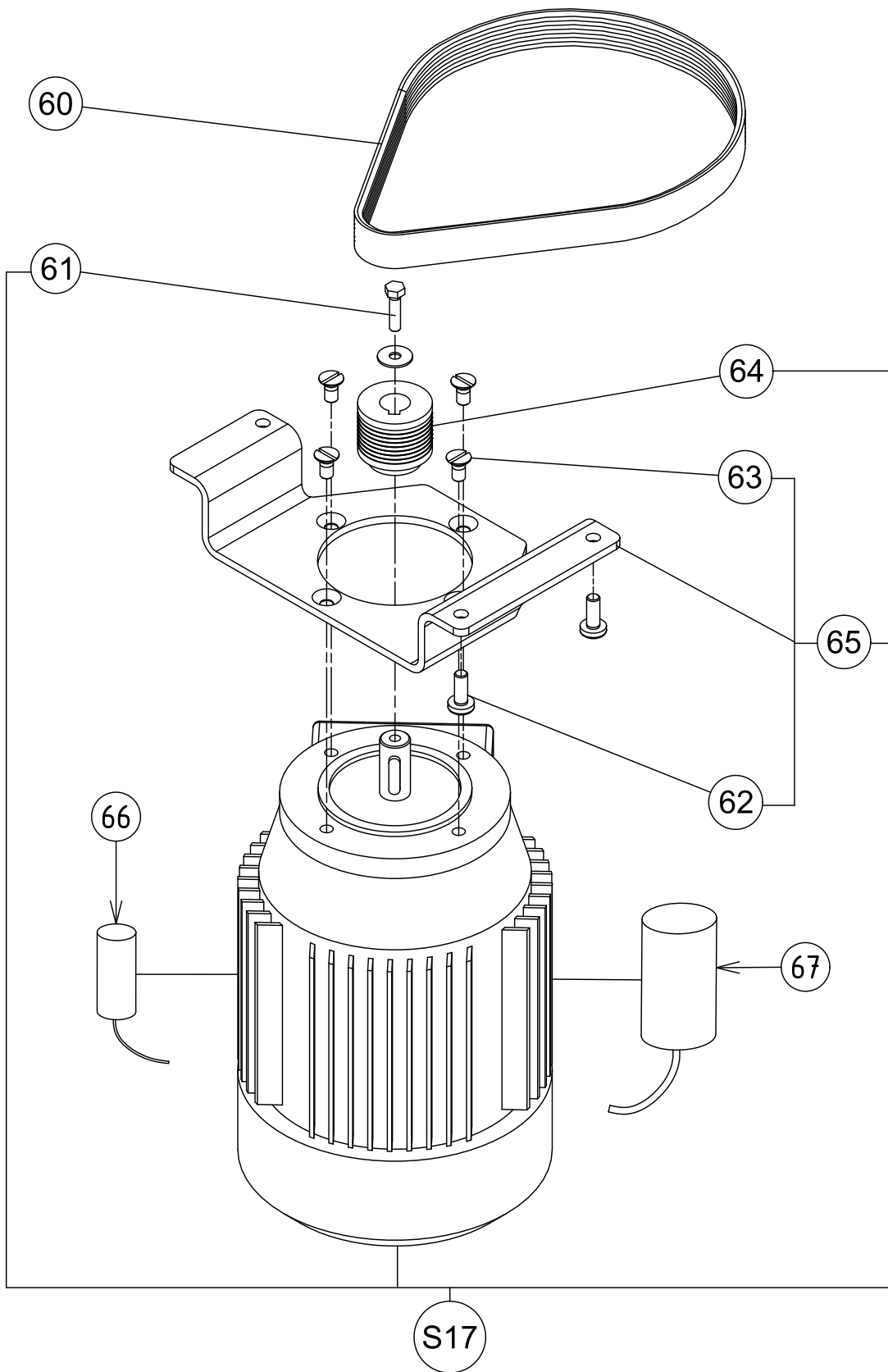
T10E / T15E - Parts list - Door

Pos.	Code	Description	V	W&T	Ref.	Notes	S/N break
20	0D5271	Door seal assembly	X				
23	0D0632	Washer CS M8 (set x 10)					
24	0D5273	Screw TH M8x60 (set x 10)					
25	0D5275	M6 mixed stop (set x 2)					
27	0D0530	Washer DE 6 (set x 10)					
28	0D5276	Screw TC M6x10 (set x 10)					
29	0KJ062	Magnet 8x35					
S8	0D5272	Door assembly T10E/T15E		X			
S9	0D5274	Door hinge spindle assembly T10E/ T15E					
S10	0D5277	Door handle assembly T10E/T15E		X			



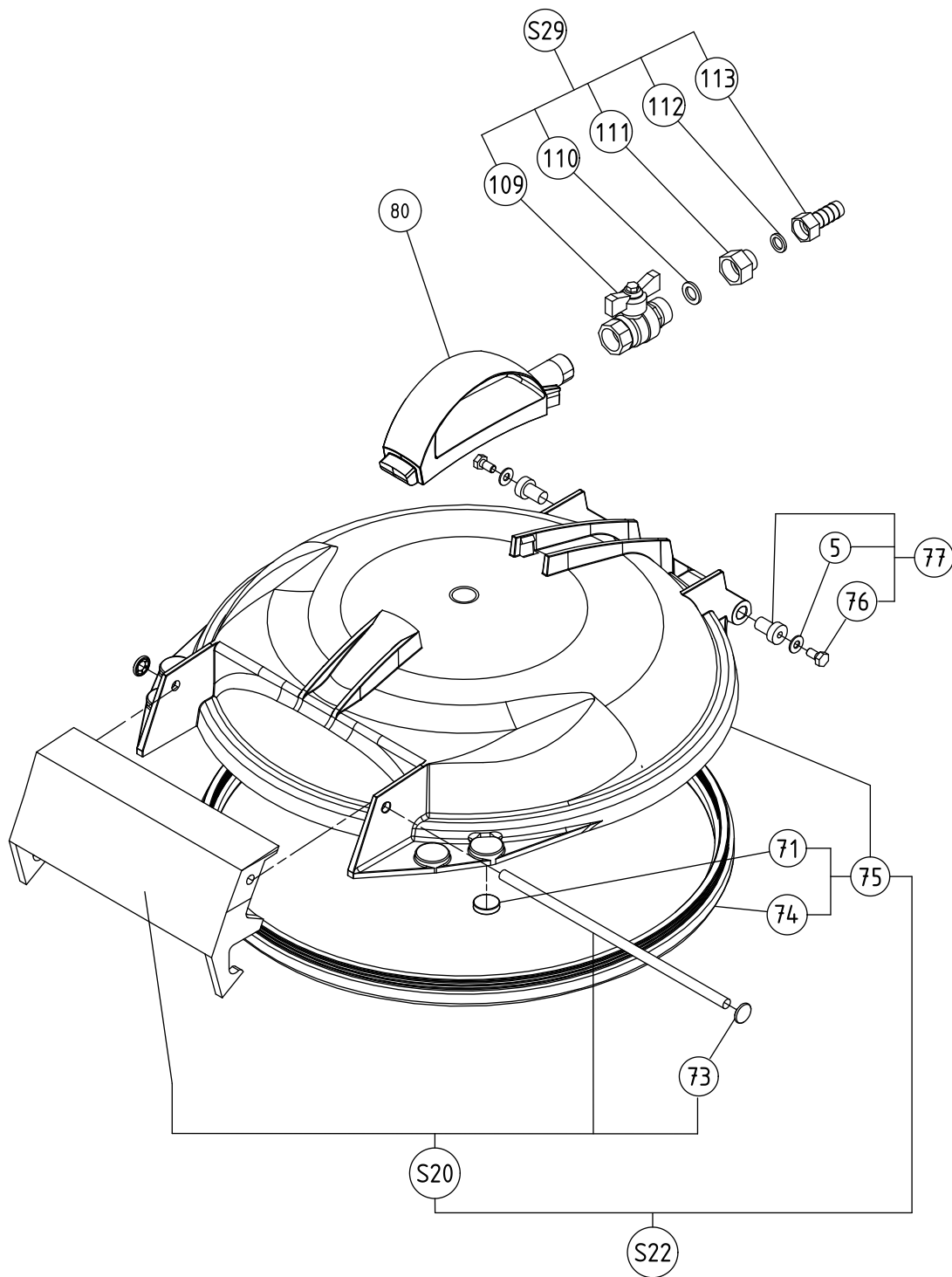
T10E / T15E - Parts list - Mechanism

Pos.	Code	Description	V	W&T	Ref.	Notes	S/N break
36	0D0507	Screw TH M8x20 (set x 10)					
37	0KQ664	Plate washer					
39	0D5278	Deflector		X			
40	0D3533	Lip seal 35x62x7 (set x 5)	X				
42	0KJ011	Pin GO6 8x32 (set x 10)					
43	0KQ394	Bearing 6205	X				
46	0KJ007	Bearing 6203	X				
47	0D5280	Driven pulley 50Hz T10/T15E/			F;G		
47	0D5281	Driven pulley 60Hz T10/T15E/			E		
48	0D0535	Washer M14 (set x 10)					
49	0D0588	Lock nut M14 (set x 10)					
50	0D5282	Screw taptite M4x8 (set x 10)					
51	0D3567	Brass earth (set x 5)					
52	0KL111	Ckey C 5x5x27 (set x 10)					
S12	653203	Abrasive plate		X			
S12	653204	Blade plate					
S12	653205	Large onions plate					
S12	653184	Small onions plate					
S12	653058	Washing plate					
S12	653620	Mussels plate					
S12	653208	T10E rinsing basket			C		
S12	653209	T15E rinsing basket			D		
S13	0D5283	Deflector assembly T10E/T15E		X			
S14	0D5212	Shaft assembly T10E/T15E		X			
S15	0D5284	Mechanism assembly T10E/T15E					



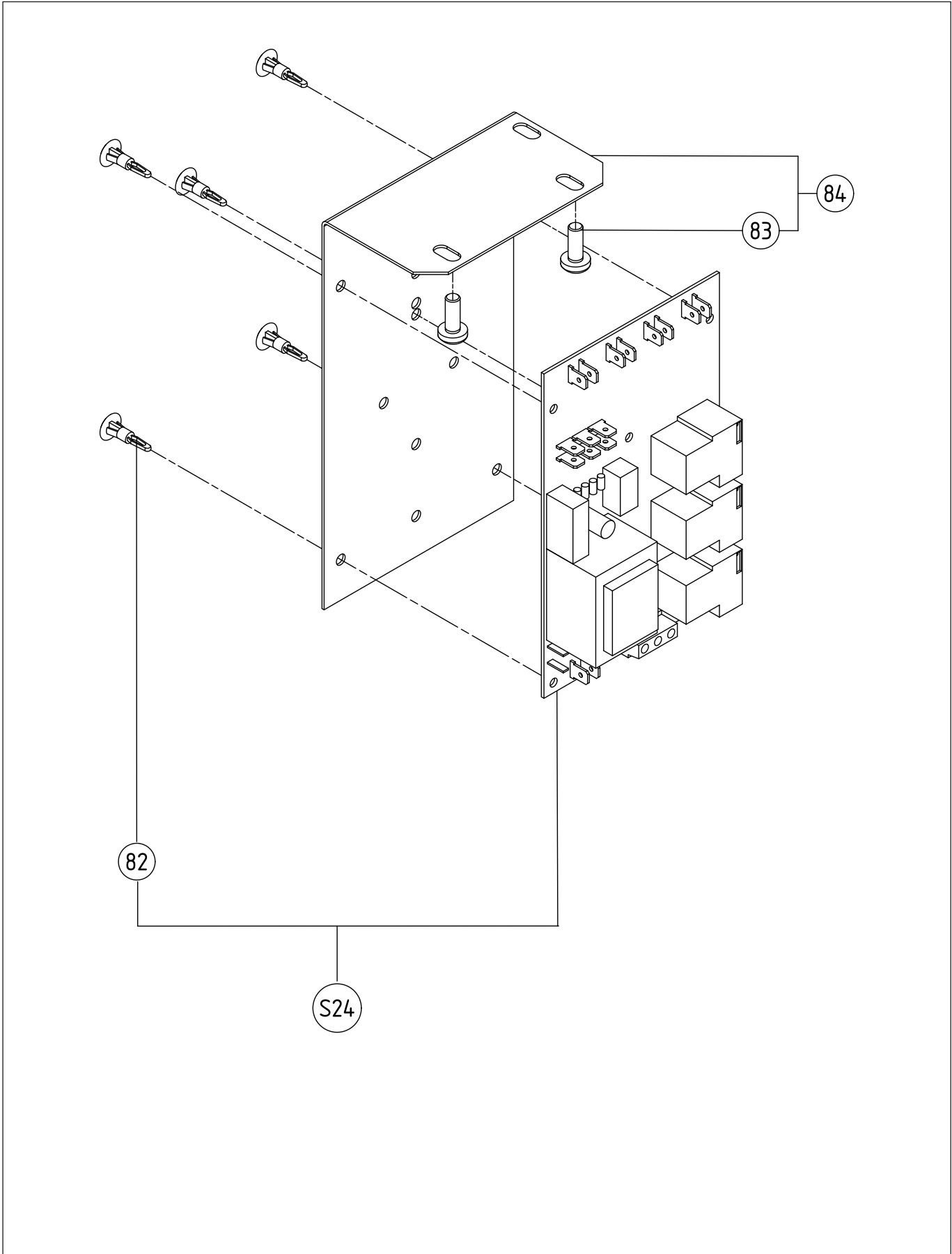
T10E / T15E - Parts list - Motor

Pos.	Code	Description	V	W&T	Ref.	Notes	S/N break
60	0D5279	Drive belt flexonic 569 J8	X				
61	0KQ407	Screw TH M5X16 (set x 10)					
61	0D0501	Washer LL5 (set x 10)					
62	0D3333	M6 x 16 torx taptite screw (Set x 10)					
63	0U0669	Screw TF M 6x12 (set x 10)					
64	0D5285	Drive pulley T10E/T15E					
65	0D5287	Motor support assembly T10/T15E					
66	0U0403	Condensator 10mf	X		F		
66	0D6731	Condensator dem 145	X		E		
67	0D8288	Relay condenser 25mf	X		F		
67	0D1465	Condensator per 30mf	X		E		
67	0D7379	Relay tension 115v			E		
S17	0D5345	Motor assembly 115V 60hz			E		
S17	0D5338	Motor assembly 220/240V 50hz	X		F		
S17	0D5344	Motor assembly 230/400V 50/60hz	X		G		



Pos.	Code	Description	V	W&T	Ref.	Notes	S/N break
71	0D5110	Magnet 20x5					
73	0D5290	Prong finisher 8 (set x 10)					
74	0D5292	Lid seal		X			
75	0D5293	Lid assembly		X			
76	0KQ494	Screw TH M6X12 (set x 10)					
5	0D0624	Washer CS M6 (set x 10)					
77	0D1306	Lid hinge spindle					
80	0D2998	Water supply + nozzle		X			
109	0KQ294	Tap MT554					
110	0D5294	Seal 18x11x2 (set x 10)					
111	0D5613	Reducer male-female 15/12					
112	0D5614	Seal 10x15x2 (set x 10)					
113	0D5615	Ring nut D12					
S20	0D5291	Lid locking handle assembly					
S22	0D5296	Complete lid					
S29	0D5611	Tap assembly		X			

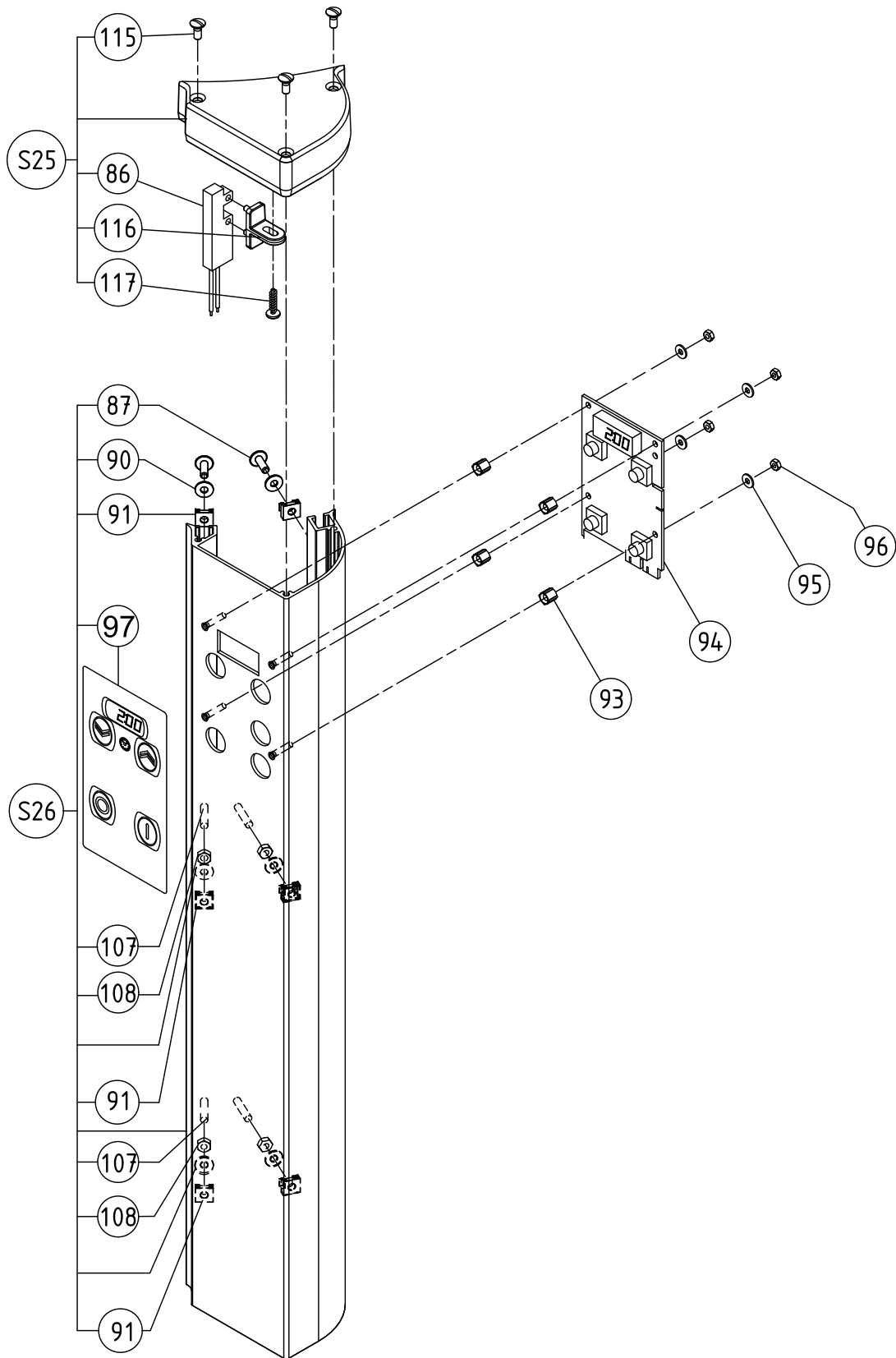
T10E / T15E - Exploded view - Power card



T10E / T15E - Parts list - Power card

Pos.	Code	Description	V	W&T	Ref.	Notes	S/N break
82	0D2848	Printed circuit fixing spacer (set x 6)					
83	0D3333	M6X16 torx taptite screw (set x 10)					
84	0D5297	circuit support assembly					
S24	0D3525	Single phase power card assembly	X		E;F		
S24	0D3524	Three-phase power card assembly	X		G		

T10E / T15E - Exploded view - Control unit



T10E / T15E - Parts list - Control unit

Pos.	Code	Description	V	W&T	Ref.	Notes	S/N break
86	0D2670	PLA detector assembly	X				
87	0D0532	Screw TRL M4X12 (set x 10)					
90	0D5137	PE4 washer (set x 10)					
91	0D1021	M4 captive nut (set x 10)					
93	0D5190	CI spacer (set x 10)					
94	0D5299	Timer card assembly	X				
95	0D5188	PE M3 washer (set x 10)					
96	033987	M3 nut (set x 10)					
97	0D5302	T10E control panel plate			C		
97	0D5303	T15E control panel plate			D		
107	0D5612	Stainless steel screw SHC M4x25 (set x 10)					
108	0KL159	Stainless steel nut HU M4 (set x 10)					
115	0D3335	Screw PT WN K40/12 (set x 10)					
116	0D5517	Safety support					
117	0D1009	Screw PTWN K40/16 (set x 10)					
118	0D5852	Lid control unit					
S25	0D7465	Lid safety support assembly					
S26	0D5301	T10E control support rail assembly			C		
S26	0D5208	T15E control support rail assembly			D		

CE