

XBM20 / XBM30

PNC	Model	Modules	Description	Note
600250	XBM20AS	B;E;G;I;J	PLANETARY MIXER - 20L - 415/50 - FLOOR - ACCESSORY HUB	
600231	XBM20AS	B;E;G;I;J;L	PLANETARY MIXER - 20L - 415/50 - FLOOR - ACCESSORY HUB - STAINLESS STEEL	
600232	XBM20S	B;E;I;J;L	PLANETARY MIXER - 20L - 415/50 - FLOOR	
600234	XBM20S	B;E;H;J;L	PLANETARY MIXER - 20L - 415/50 - TABLE - STAINLESS STEEL	
600238	XBM20S	B;C;H;J;N	PLANETARY MIXER - 20L - 240/50 - TABLE - CE SCHUKO	
600239	XBM20S	B;E;H;J	PLANETARY MIXER - 20L - 415/50 - TABLE	
600241	XBM20AS	B;C;G;H;J;N	PLANETARY MIXER - 20L - 240/50 - TABLE - ACCESSORY HUB - CE SCHUKO	
600242	XBM20AS	B;E;G;H;J	PLANETARY MIXER - 20L - 415/50 - TABLE - ACCESSORY HUB	
600243	XBM20AS	B;F;G;H;J	PLANETARY MIXER - 20L - 440/60 - TABLE - ACCESSORY HUB	
600245	XBM20S	B;C;I;J;N	PLANETARY MIXER - 20L - 240/50 - FLOOR - CE SCHUKO	
600246	XBM20S	B;E;I;J	PLANETARY MIXER - 20L - 415/50 - FLOOR	
600249	XBM20AS	B;C;G;I;J;N	PLANETARY MIXER - 20L - 240/50 - FLOOR - ACCESSORY HUB - CE SCHUKO	
600251	XBM20AS	B;D;G;I;J;N	PLANETARY MIXER - 20L - 208/60 - FLOOR - ACCESSORY HUB - CE SCHUKO	
600252	XBM20AS	B;F;G;I;J	PLANETARY MIXER - 20L - 440/60 - FLOOR - ACCESSORY HUB	
600254	XBM20AS	B;C;G;H;J;M	PLANETARY MIXER - 20L - 240/50 - TABLE - ACCESSORY HUB - UK PLUG	
600257	XBM20AS	B;D;G;H;J;M	PLANETARY MIXER - 20L - 208/60 - TABLE - ACCESSORY HUB - UK PLUG	
600144	XBM20S	A;C;H;J;N	PLANETARY MIXER - 20L - 240/50 - TABLE - CE SCHUKO	
600145	XBM20S	A;E;H;J	PLANETARY MIXER - 20L - 415/50 - TABLE	
600146	XBM20AS	A;C;G;H;J;N	PLANETARY MIXER - 20L - 240/50 - TABLE - ACCESSORY HUB - CE SCHUKO	
600147	XBM20AS	A;E;G;H;J	PLANETARY MIXER - 20L - 415/50 - TABLE - ACCESSORY HUB	
600148	XBM20S	A;E;H;J;L	PLANETARY MIXER - 20L - 415/50 - TABLE - STAINLESS STEEL	
600149	XBM20S	A;C;I;J;N	PLANETARY MIXER - 20L - 240/50 - FLOOR - CE SCHUKO	
600150	XBM20S	A;E;I;J	PLANETARY MIXER - 20L - 415/50 - FLOOR	

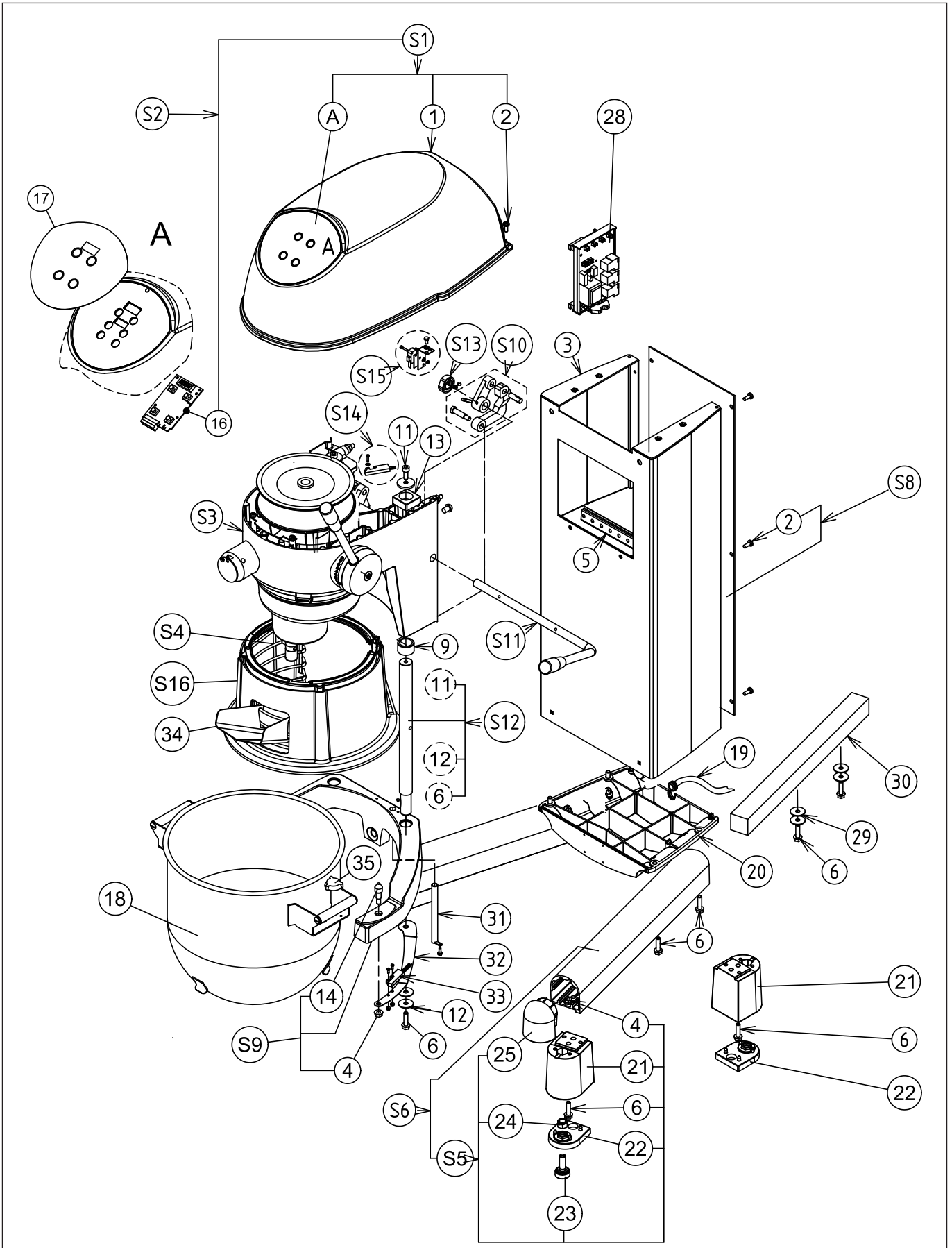
XBM20 / XBM30

PNC	Model	Modules	Description	Note
600151	XBM20AS	A;C;G;I;J;N	PLANETARY MIXER - 20L - 240/50 - FLOOR - ACCESSORY HUB - CE SCHUKO	
600152	XBM20AS	A;E;G;I;J	PLANETARY MIXER - 20L - 415/50 - FLOOR - ACCESSORY HUB	
600153	XBM20S	A;E;I;J;L	PLANETARY MIXER - 20L - 415/50 - FLOOR - STAINLESS STEEL	
600154	XBM20AS	A;E;G;I;J;L	PLANETARY MIXER - 20L - 415/50 - FLOOR - ACCESSORY HUB - STAINLESS STEEL	
600267	XBM30AS	B;E;G;I;K	PLANETARY MIXER - 30L - 415/50 - FLOOR - ACCESSORY HUB	
600259	XBM30AS	B;E;G;I;K;L	PLANETARY MIXER - 30L - 415/50 - FLOOR - ACCESSORY HUB - STAINLESS STEEL	
600260	XBM30S	B;E;I;K;L	PLANETARY MIXER - 30L - 415/50 - FLOOR - STAINLESS STEEL	
600263	XBM30S	B;C;I;K;N	PLANETARY MIXER - 30L - 240/50 - FLOOR - CE SCHUKO	
600264	XBM30S	B;E;I;K	PLANETARY MIXER - 30L - 415/50 - FLOOR	
600265	XBM30S	B;F;I;K	PLANETARY MIXER - 30L - 440/60 - FLOOR	
600268	XBM30AS	B;F;G;I;K	PLANETARY MIXER - 30L - 440/60 - FLOOR - ACCESSORY HUB	
600270	XBM30AS	B;C;G;I;K;M	PLANETARY MIXER - 30L - 240/50 - FLOOR - ACCESSORY HUB - UK PLUG	
600297	XBM30AS	B;D;G;I;K;N	PLANETARY MIXER - 30L - 208/60 - FLOOR - ACCESSORY HUB - CE SCHUKO	
600162	XBM30S	A;C;I;K;N	PLANETARY MIXER - 30L - 240/50 - FLOOR - CE SCHUKO	
600163	XBM30S	A;E;I;K	PLANETARY MIXER - 30L - 415/50 - FLOOR	
600164	XBM30AS	A;E;G;I;K	PLANETARY MIXER - 30L - 415/50 - FLOOR - ACCESSORY HUB	
600165	XBM30S	A;E;I;K;L	PLANETARY MIXER - 30L - 415/50 - FLOOR - STAINLESS STEEL	
600166	XBM30AS	A;E;G;I;K;L	PLANETARY MIXER - 30L - 415/50 - FLOOR - ACCESSORY HUB - STAINLESS STEEL	

XBM20 / XBM30**Modules classifications**

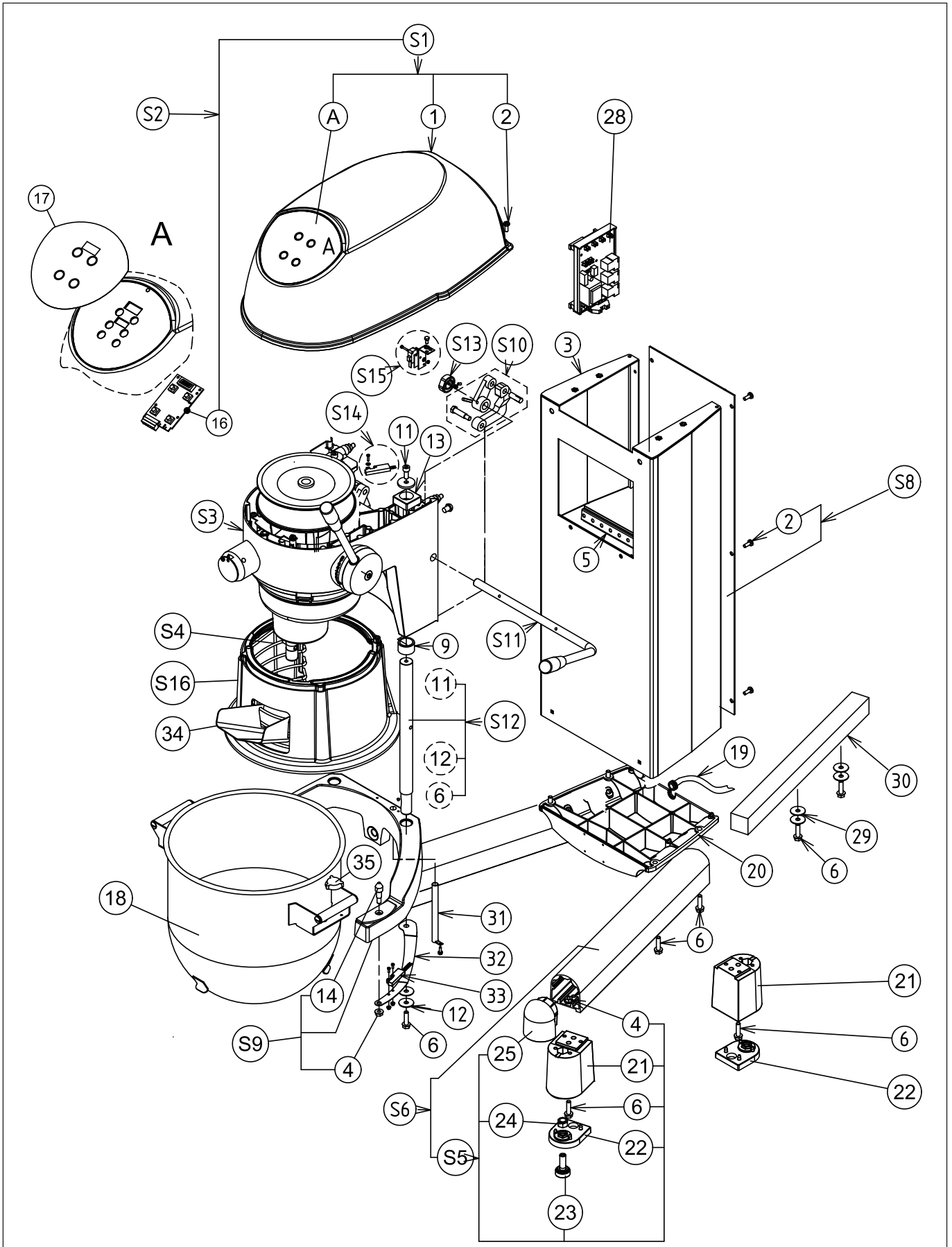
A	DITO SAMA
B	ELECTROLUX PROFESSIONAL
C	I - 220-240 50
D	I - 208-230 60
E	III - 200-240/380-415 50
F	III - 200-220/380-440 60
G	ACCESSORY HUB
H	TABLE
I	FLOOR
J	BOWL 20L
K	BOWL 30L
L	STAINLESS STEEL
M	UK PLUG
N	CE SCHUKO

Pag.	Index
4	Exploded view - Structure
5	Parts list - Structure
8	Exploded view - Variator
9	Parts list - Variator
12	Exploded view - Mechanism
13	Parts list - Mechanism
16	Exploded view - Castors (optional)
17	Parts list - Castors (optional)



XBM20 / XBM30 - Parts list - Structure

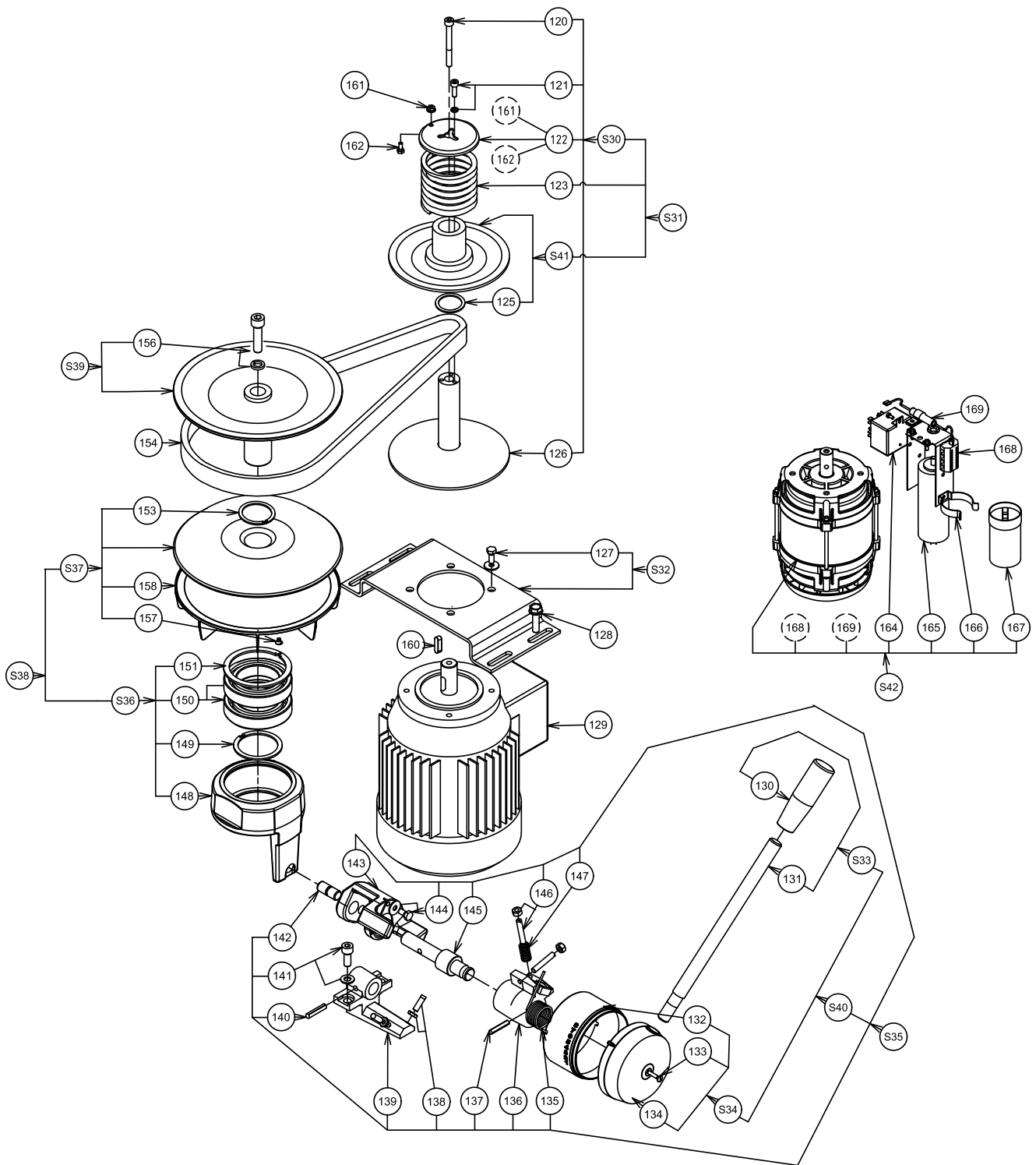
Pos.	Code	Description	V	W&T	Ref.	Notes	S/N break
1	0D7812	Cover					
2	0D3333	Torx taptite screw M6x16 (set x 10)					
3	0D6463	Table column			H		
3	0D6465	Table stainless steel column			H;L		
3	0D6464	Floor column			I		
3	0D6466	Floor stainless steel column			I;L		
4	0D3590	Nut HU M8 notched base (set x 10)					
5	0D6574	Component support rail assembly					
6	0D6084	Screw TH M8x30 notched base (set x 10)					
9	0D1035	Raising and lowering bush (set x 2)		X			
11	0D6084	Screw THM8x30 notched (set x 10)					
11	0D6275	Flange washer (set x 5)					
13	0U0535	Flexible stopper		X			
14	0KQ284	Bowl pin					
16	0D5366	Timer board	X				
17	0DF141	Touchscreen control panel		X	A		
17	0DF142	Touchscreen control panel		X	B		
18	650121	Bowl 20 litres		X	J		
18	650123	Bowl 30 litres		X	K		
19	0D6135	Standard single phase lead assembly	X		N		
19	0D6134	Standard three-phase lead assembly	X		E;F		
19	0D6368	UK single phase lead assembly	X		M		
20	0D2781	Base					
21	0D6137	Foot					
22	0D2778	Pad (set x 4)					
23	0D2779	Adjustable pad (set x 2)					
24	0KQ496	Nut M12 (set x 10)					
25	0D2776	Tube end piece (set x 4)					
28	0KQ429	Single phase power supply board	X				
28	0D7532	Three phase power supply board	X				
29	0D0630	Washer LL8 (set x 10)					
30	0D6136	Counterweight					
31	0D7744	Bowl presence tube					
32	0D7745	Sensor support XBM20			J		
32	0D7746	Sensor support XBM30			K		
33	0D7747	Sensor assembly	X				
33	0D5308	Screw TC M3x12 (set x 10)					



XBM20 / XBM30 - Parts list - Structure

Pos.	Code	Description	V	W&T	Ref.	Notes	S/N break
33	0D7383	Nut HU M3 (set x 10)					
34	0D7748	Chute		X			
35	0D7750	Magnet support assembly		X			
S1	0DF143	Cover assembly			A		
S1	0DF144	Cover assembly			B		
S2	0DF178	Complete cover			A		
S2	0DF179	Complete cover			B		
S3	0D6469	Complete head (with accessory hub)			G		
S3	0D6468	Complete head (without accessory hub)					
S4	0D7814	Complete wire screen					
S5	0D2777	Foot assembly					
S6	0D2780	Complete foot tube					
S8	0D7582	Rear plate floor model			I		
S8	0D7581	Rear plate table model			H		
S9	0H1038	20 litres cradle assembly			J		
S9	0U0557	30 litres cradle assembly			K		
S10	0D2683	Control rod assembly					
S11	0D2774	Raising and lowering lever		X			
S12	0D5363	Rod assembly					
S13	0D2773	Raising and lowering safety device cam					
S14	0D2771	Screen safety device	X				
S15	0D2772	Raising and lowering safety device	X				
S16	0D7749	Screen		X			

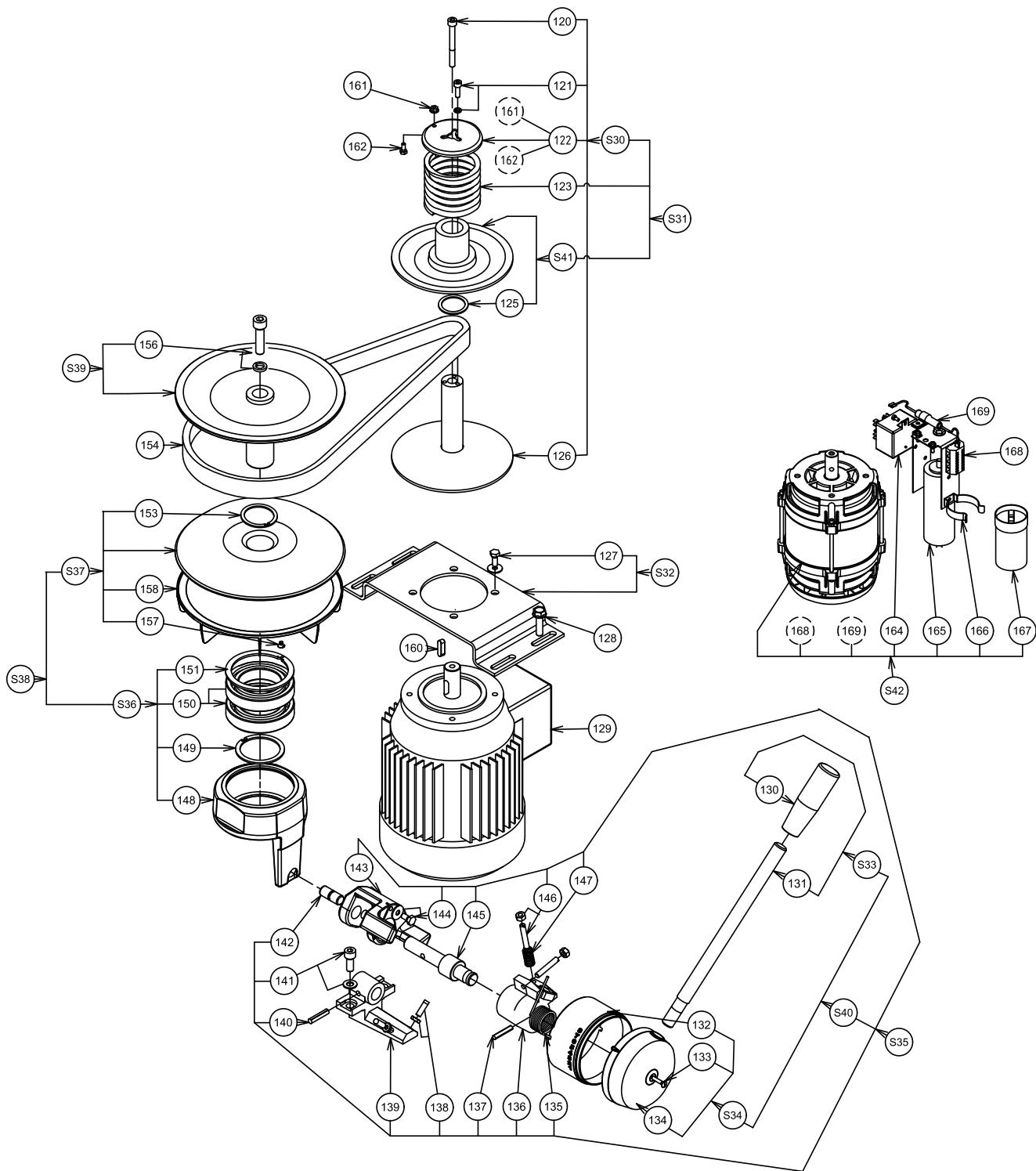
XBM20 / XBM30 - Exploded view - Variator



XBM20 / XBM30 - Parts list - Variator

Pos.	Code	Description	V	W&T	Ref.	Notes	S/N break
120	0D2311	Screw CHC M6x90 (set x 5)					
120	0D2876	Washer W6 (set x 10)					
121	0D2942	Screw H M5x20 (set x 10)					
121	0D2297	Washer CS M5 (set x 10)					
122	0D6770	Spring stop plate					
123	0D2726	Speed variation spring		X			
125	0KQ515	Felt washer 29x23x4 (set x 10)		X			
126	0KQ569	Lower motor flange		X			
127	0KQ494	Screw H M6x12 (set x 10)					
127	0D0619	Washer CS L6 (set x 10)					
128	0D6084	Screw TH notched base M8x30 (set x 10)					
129	0D0782	3 230/400 Motor assembly	X		E;F		
130	0D2679	Handle		X			
131	0D6028	Speed variation control lever					
132	0D6120	Speed change connector					
133	0D0679	Screw FB 4x20 (set x 10)					
134	0D6121	Cap					
135	0KJ730	Backstop spring		X			
136	034008	Lever support					
137	0D3586	Pin G01 5x30 (set x 10)					
138	0U0671	Screw ST slotted M6x20 (set x 10)					
138	0D0590	Nut HM6 (set x 10)					
139	0KI645	Stop					
140	0D0400	Pin G01 6x30 (set x 10)					
141	0KQ492	Screw CHC M8X20 (set x 10)					
141	0U0660	Washer W8 (set x 10)					
142	0U0449	Sliding plunger					
143	0KQ356	Backstop yoke					
144	0D3587	Screw H M6x12 (set x 10)					
144	0D0619	Washer CS L6 (set x 10)					
145	0U0361	Backstop shaft					
146	0D0670	Screw ST slotted M6x35 (set x 5)					
146	0D0503	Nut HU M6 (set x 10)					
147	0KQ353	Maintaining spring		X			
148	0D6122	Sliding gear					
149	0KQ497	Circlip 50E (set x 10)					

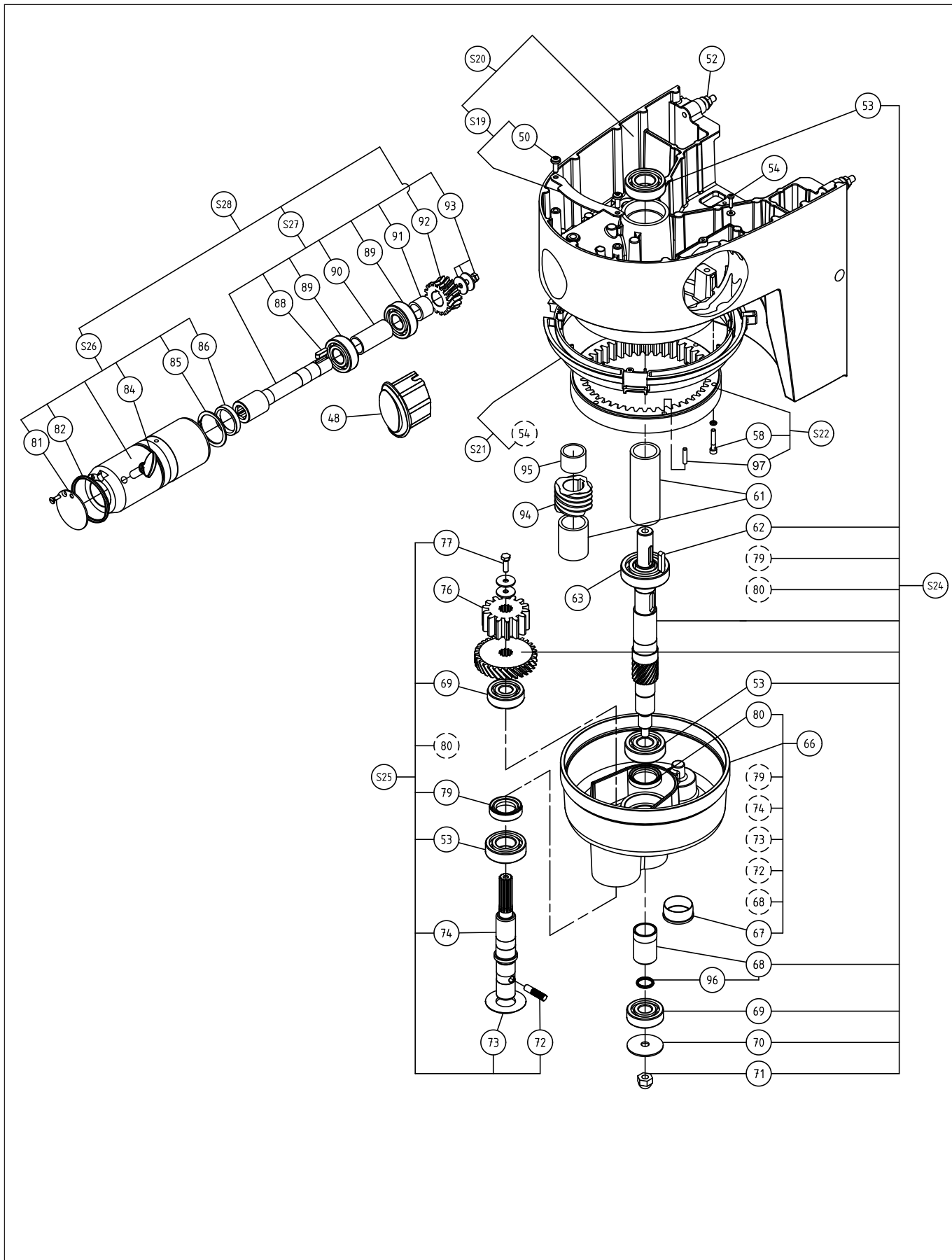
XBM20 / XBM30 - Exploded view - Variator



XBM20 / XBM30 - Parts list - Variator

Pos.	Code	Description	V	W&T	Ref.	Notes	S/N break
150	0KQ332	Bearing 6010 2RS		X			
151	0KQ498	Circlip 80I (set x 10)					
153	0D0496	Circlip 42I (set x 10)					
154	0D2720	Drive belt	X	X			
156	0D6099	Screw CHC M10x40 (set x 10)					
156	0D2265	Washer W10 (set x 10)					
157	0D1023	Screw F M4x6 (set x 10)					
158	0D6092	Fan + screw					
160	0KQ488	Key A6x6x20 (set x 10)					
161	0D3065	Nut Hu M4 (set x 10)					
162	0U0665	Screw Th M4x10 (set x 10)					
164	0D7436	Klixon device 230V 50HZ	X		C		
164	0D7560	Klixon device 220V 60HZ	X		D		
165	0D7559	45 mf running capacitor	X				
166	0D3491	Spring clip (set x 5)					
167	0H1034	Start capacitor 230V 50HZ	X		C		
167	0KQ203	Start capacitor 220V 60HZ	X		D		
168	0D5135	Terminal bar (set x 5)	X				
169	0D7401	Resistor	X				
S30	0D6100	Lower motor flange					
S31	0D2767	Drive pulley assembly		X			
S32	0D7586	Motor support assembly					
S33	0KQ230	Speed lever		X			
S34	0D6094	Complete trim					
S35	0D6102	Complete speed change		X			
S36	0D6101	Sliding gear assembly		X			
S37	0D6093	Lower driven flange assembly		X			
S38	0D2760	Sliding gear + lower flange		X			
S39	0D2759	Upper driven flanges assembly		X			
S40	0D2762	Speed lever + cover assembly		X			
S41	0D6096	Upper driven pulley assembly		X			
S42	0D7583	Single phase 230V 50HZ motor ass.	X		C		2015-->
S42	0D7584	Single phase 208V 60HZ motor assembly	X		D		

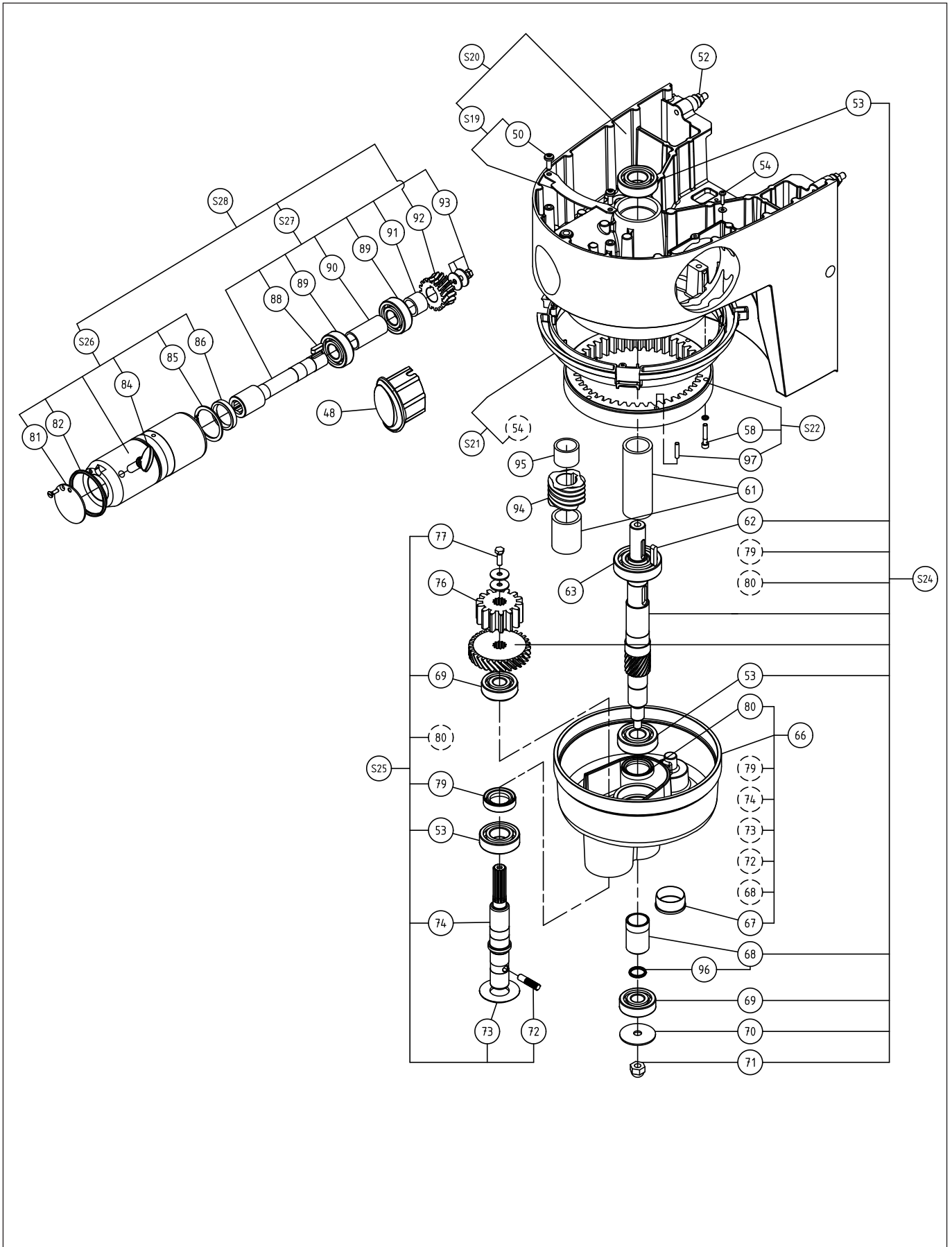
XBM20 / XBM30 - Exploded view - Mechanism



XBM20 / XBM30 - Parts list - Mechanism

Pos.	Code	Description	V	W&T	Ref.	Notes	S/N break
48	0D5368	Accessory hub cap					
50	0D3333	Torx taptite screw M6x16 (set x 10)					
52	0D3590	Nut HU M8 notched base (set x 10)					
53	0KQ394	Bearing 6205 2RS		X			
54	0D1009	Screw PT WN k40/16 (set x 10)					
54	0D0631	Contact washer (set x 10)					
58	0KQ491	Washer (set x 10)					
58	0D6118	Screw CHC M5x30 (set x 10)					
61	0D6130	Spacer no accessories hub version					
61	0D6129	Spacer accessories hub version			G		
62	0KQ487	Key A 6x6x30 (set x 10)					
63	0D0006	Bearing 6206 2RS		X			
66	0D6110	Planetary gear system					
67	0D5962	GPN 300 V301 hub (set x 10)					
68	0D6749	Spacer assembly					
69	0KI590	Bearing 6303 2RS1		X			
70	0U0409	Sun gear washer					
71	0D0584	Cap nut M10 (set x 5)					
72	0D0955	Tool holder shaft pin (set x 5)		X			
73	0D0954	Protective washer (set x 2)					
76	0D2721	Cogwheel 14-tooth		X			
77	0KQ512	Screw TH 6x20 (set x 10)					
77	0D0627	Washer CL m6 (set x 10)					
79	0U0491	Lipped seal 25x42x10		X			
80	0KQ342	Lipped seal 30x42x7		X			
81	0D1052	Accessory socket cover plate			G		
82	0D6041	O-ring 55.56x3.53 (set x 10)		X	G		
84	0KQ334	Violin screw			G		
85	0D0656	Circlips 47i (set x 10)			G		
86	0H1040	Lipped seal 30x40x7 (set x 5)		X	G		
88	0KQ488	Cotter pin A6x6x20 (set x 10)			G		
89	0KQ395	Bearing 6204 ddu		X	G		
90	0KL162	Spacer			G		
91	0D3633	Spacer			G		
92	0D2753	Accessory socket wheel		X	G		
93	0KQ512	Screw TH M 6x20 (set x 10)			G		

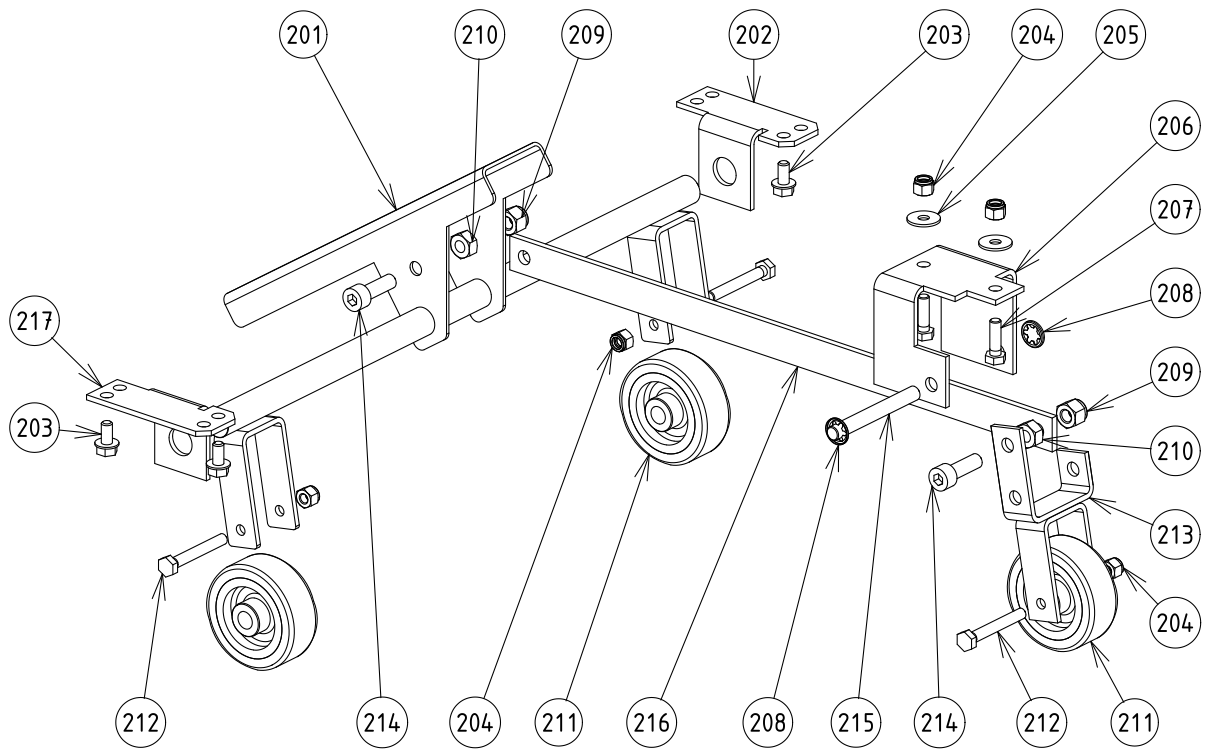
XBM20 / XBM30 - Exploded view - Mechanism



XBM20 / XBM30 - Parts list - Mechanism

Pos.	Code	Description	V	W&T	Ref.	Notes	S/N break
93	0D0627	Wascher CL M6 (set x 10)			G		
94	0D6128	Accessory socket screw		X	G		
95	0D6127	Upper spacer			G		
96	0KQ575	O-ring Ø17,12x2.62 (set x 5)		X			
97	0D7350	Pin D6 (set x 10)					
S19	0D2754	Tab assembly					
S20	0D6467	Basic head					
S21	0D1699	Shell assembly					
S22	0D7333	Crown wheel assembly		X			
S24	0D2758	Sun wheel shaft and wheel assembly		X			
S25	0D2757	Tool holder shaft assembly		X			
S26	0D2750	Sleeve assembly		X	G		
S27	0D2752	Accessory socket shaft assembly		X	G		
S28	0D2751	Accessory socket assembly		X	G		

XBM20 / XBM30 - Exploded view - Castors (optional)



XBE20 / XBB20 / XBE30 / XBB30 - Parts list - Castors (optional)

Pos.	Code	Description	V	W&T	Ref.	Notes	S/N break
201	0D5391	Shaft + pedal					
202	0D5394	Support A					
203	0D0551	Taptite screw M6x12 (set x 10)					
204	0D1659	Locking nut M6 (set x 10)					
205	0D0619	Washer CS L6 (set x 10)					
206	0D5395	Rear support					
207	0KQ512	Screw H M6x20 (set x 10)					
208	0D0533	Tooth lock washer Ø8 (set x 10)					
209	0D0641	Locking nut M8 (set x 10)					
210	0D0642	Nut M8 (set x 10)					
211	0D5357	Wheel + spacer (set x 3)					
212	0D0599	Screw H M6x45 (set x 10)					
213	0D5396	Rear plate					
214	0D1660	Screw Chc M8x25 (set x 10)					
215	0D5397	Rear shaft					
216	0D5392	Connecting shaft					
217	0D5393	Support B					

CE