

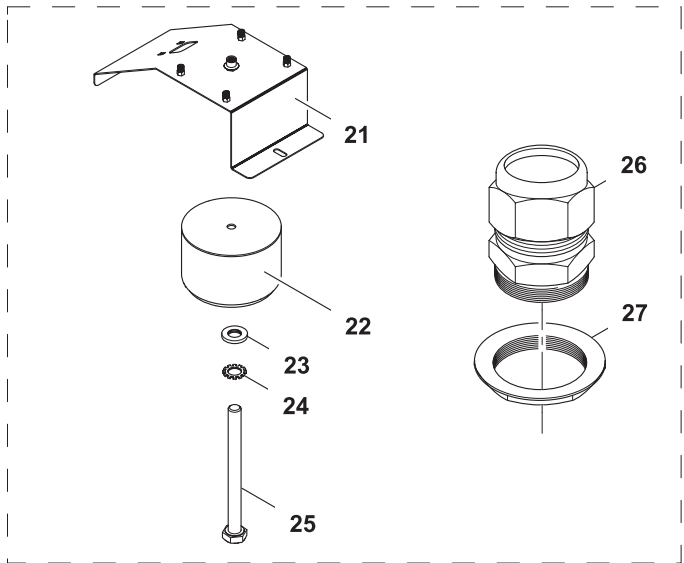
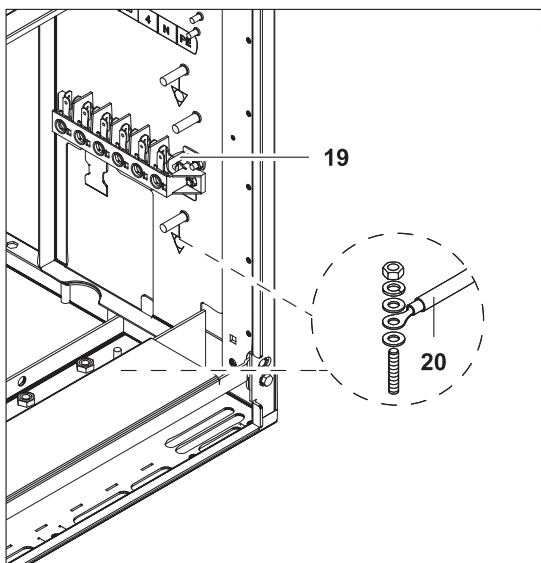
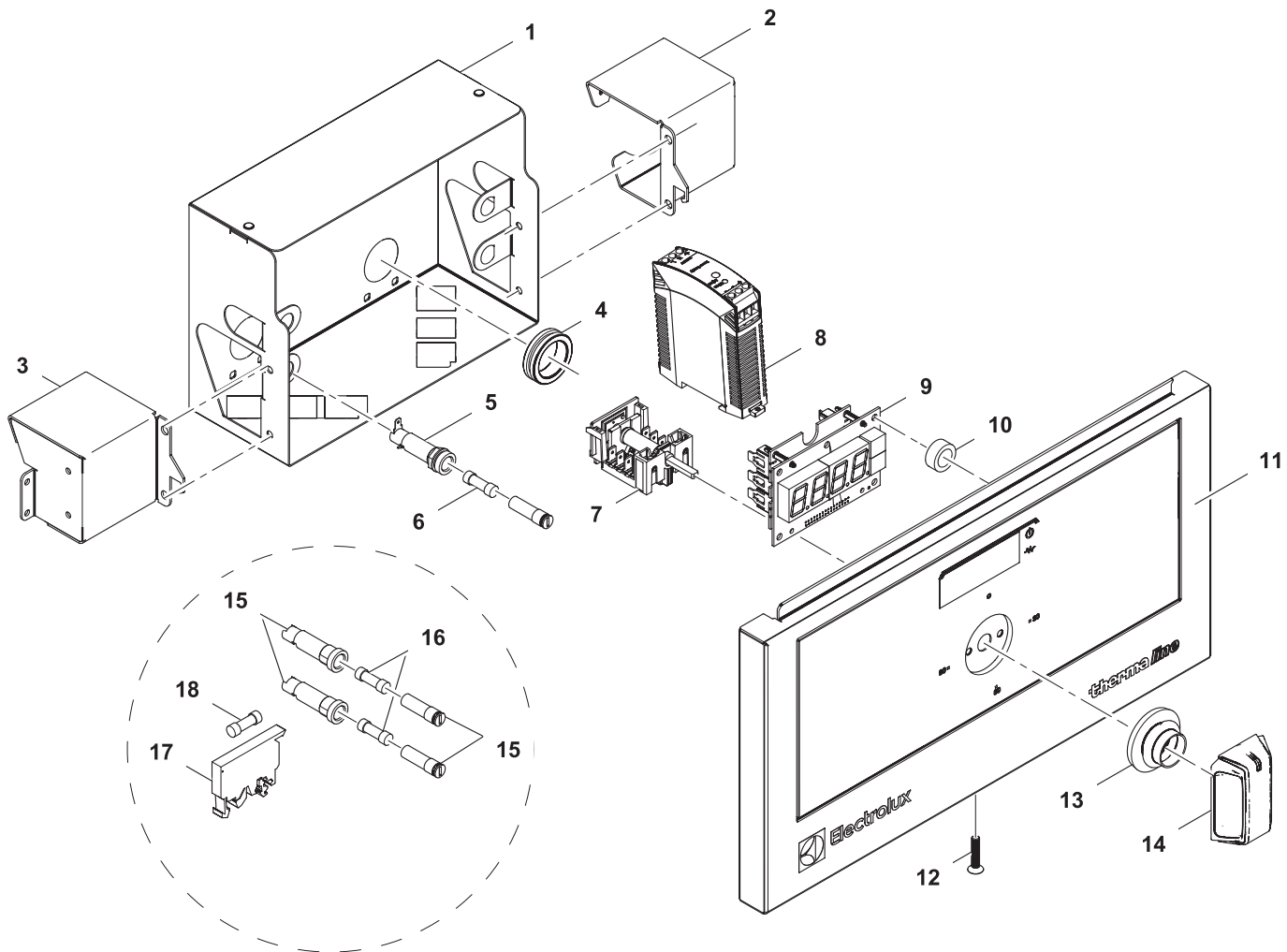
DE BAIN MARIE 1/1GN & 2/1GN
EN BAIN MARIE 1/1GN & 2/1GN

PNC	Factory Model	Ref.	Description
588086	MABAAADOAO	a	BAIN MARIE, 1/1GN, TAP BACK, 400X800X250H
588087	MABAABDOAO	a	BAIN MARIE, 1/1GN, TAP BACK, C-BOARD, 400X800X250H
588400	MABFAAEAO	b	BAIN MARIE, 1/1GN, TAP LEFT, 500X800X250H
588401	MABFABEOAO	b	BAIN MARIE, 1/1GN, TAP LEFT, C-BOARD, 500X800X250H
588402	MABGAAEOAO	c	BAIN MARIE, 1/1GN, TAP RIGHT, 500X800X250H
588403	MABGABEOAO	c	BAIN MARIE, 1/1GN, TAP RIGHT, C-BOARD, 500X800X250H
588088	MABBAAHOAO	d	BAIN MARIE, 2/1GN, TAP BACK, 800X800X250H
588089	MABBABHOAO	d	BAIN MARIE, 2/1GN, TAP BACK, C-BOARD, 800X800X250H
588552	MBBABBDOAO	e	BAIN MARIE, 1/1GN, TAP BACK, C-BOARD, 400X850X250H
588553	MBBBBBHOAO	f	BAIN MARIE, 2/1GN, TAP BACK, C-BOARD, 800X850X250H
589132	MCBAAADOAO	g	BAIN MARIE, 1/1GN, TAP BACK, 400X900X250H
589133	MCBAABDOAO	g	BAIN MARIE, 1/1GN, TAP BACK, C-BOARD, 400X900X250H
589633	MCBFAAEAO	h	BAIN MARIE, 1/1GN, TAP LEFT, 500X900X250H
589634	MCBFABEOAO	h	BAIN MARIE, 1/1GN, TAP LEFT, C-BOARD, 500X900X250H
589635	MCBGAAEOAO	i	BAIN MARIE, 1/1GN, TAP RIGHT, 500X900X250H
589636	MCBGABEOAO	i	BAIN MARIE, 1/1GN, TAP RIGHT, C-BOARD, 500X900X250H
589134	MCBBAAHOAO	j	BAIN MARIE, 2/1GN, TAP BACK, 800X900X250H
589135	MCBBABHOAO	j	BAIN MARIE, 2/1GN, TAP BACK, C-BOARD, 800X900X250H
589820	MCBAEADIDM	k	MARINE* BAIN MARIE, 1/1GN, TAP BACK, 400X900X700H
589822	MCBF AEIDM	l	MARINE* BAIN MARIE, 1/1GN, TAP LEFT, 500X900X700H
589823	MCBGAEIDM	m	MARINE* BAIN MARIE, 1/1GN, TAP RIGHT, 500X900X700H
589821	MCBBEAHIDM	n	MARINE* BAIN MARIE, 2/1GN, TAP BACK, 800X900X700H

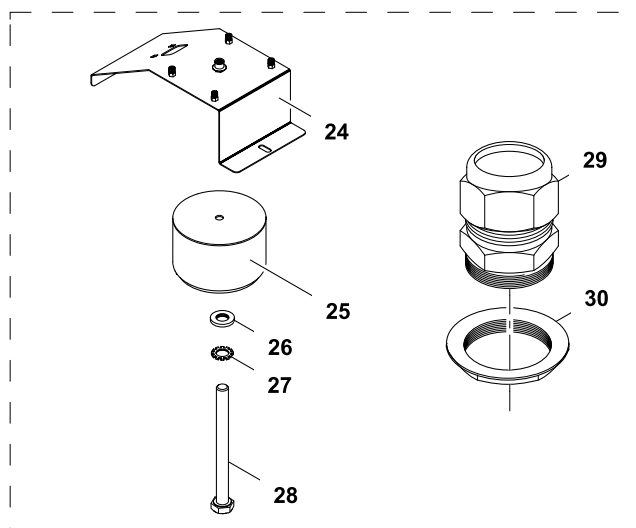
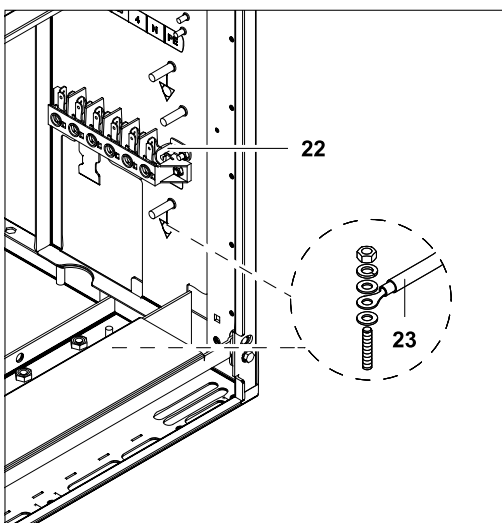
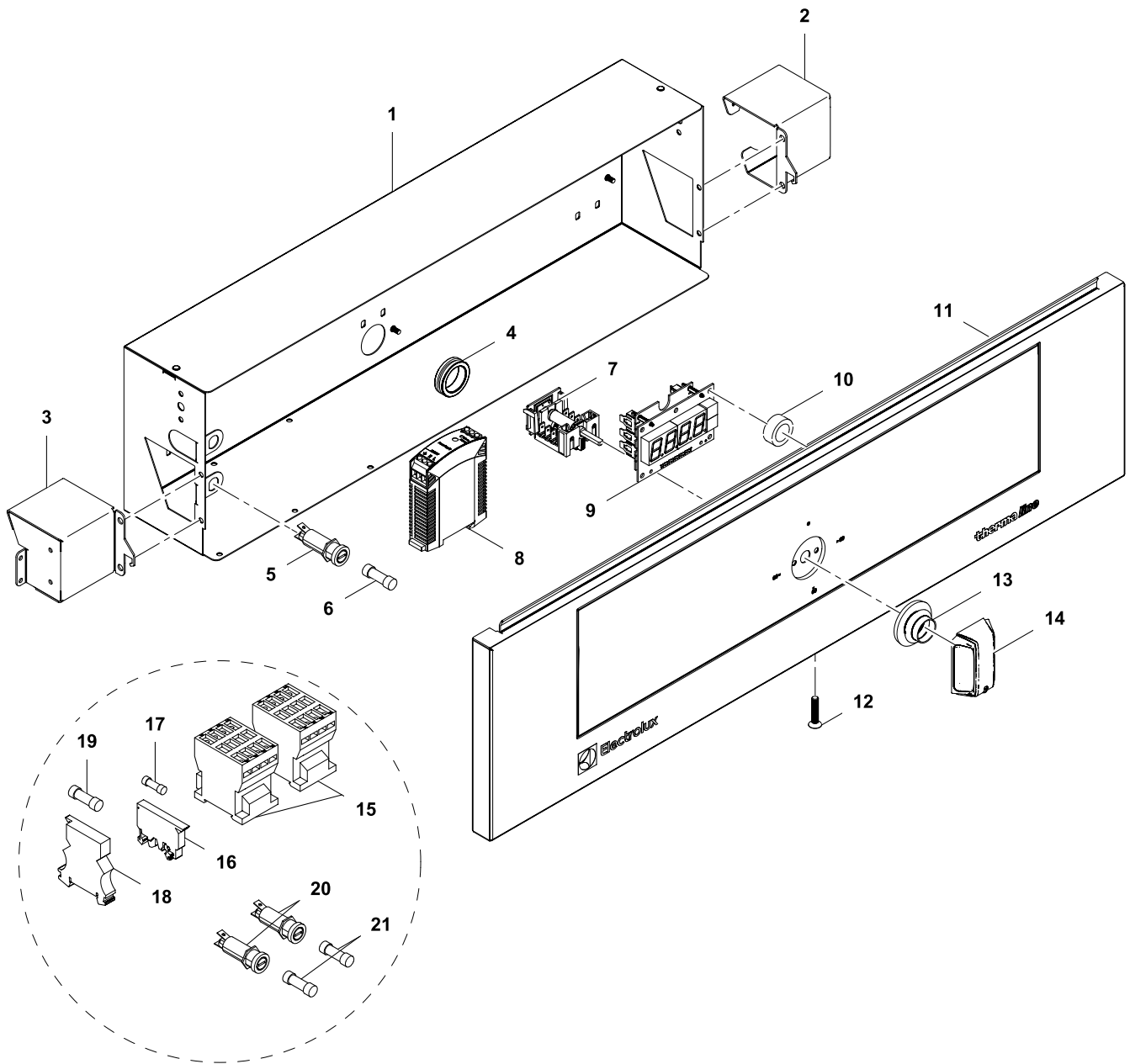
Page	Index
2	Electrical compartment 1/1 GN
4	Electrical compartment 2/1 GN
6	Mechanical parts
8	Drain water connection
10	Mixer tap
12	H3 base (marine)

Last Updates
Ed. 01/2015

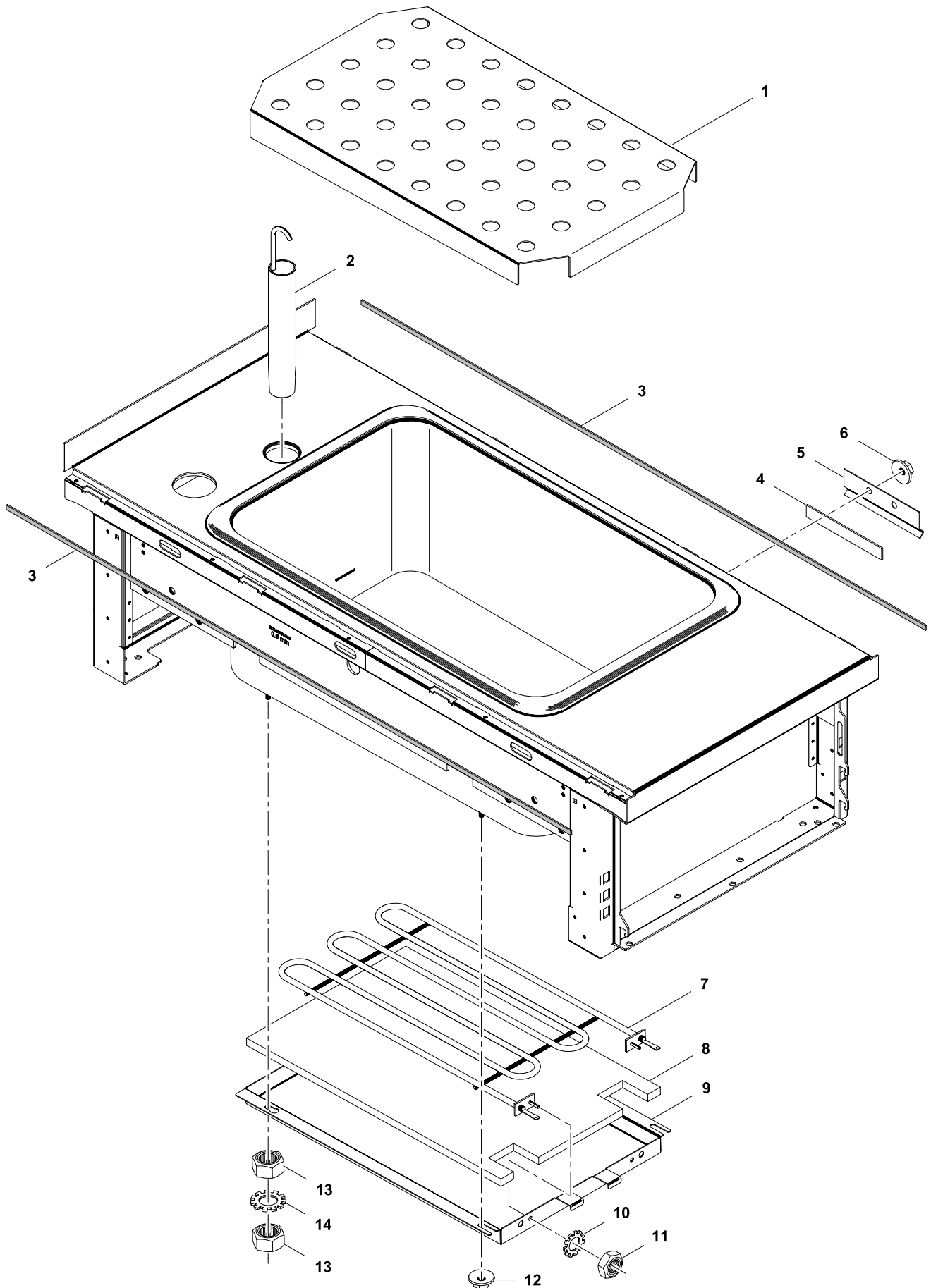
Page
1/1GN



1	Alias	Code	Bezeichnung	Description	Ref.	Valid from Serial N°
1	82.3016	*	Elektrobox 400	Electrical compartment 400	1/1 GN	
2	82.3001	*	Standardventilationsbox links	Ventilation box left	1/1 GN	
3	82.3002	*	Standardventilationsbox rechts	Ventilation box right	1/1 GN	
4	712 044961.17	OKT854	Kabeltülle Ø25/Ø31/Ø35x10	Cable: sleeve Ø25/Ø31/Ø35x10	1/1 GN	
5	82.7093	056582	Halter Sicherung	Fuse holder	1/1 GN Standard	
6	712 344362.01	0G5814	Sicherung 5x20 1A	Fuse 5x20 1A	1/1 GN Standard	
7	82.9076	0G6317	Schalter off-lin 3/4 +Regler 93° +10K Poti	switch off-lin 3/4+control 93°+10K Potent	D800/900	
	1 115 1590	0G2764	Kapillarohrregler	Capillary control	D850	
8	82.9030	0G6075	DC Power supply 2V	DC Power supply 2V	D800/900	
9	82.9115.02	0G6303	Eurotas Display Bain Marie	Eurotas display Bain Marie	D800/900	
	72.5938.04	0K1362	Anzeigelampe grün	Indicator light, green	D850	
	72.5938.08	0K1364	Einsteckfassung grün/gelb Ø10mm	Lamp holder, green/yellow, Ø10mm	D850	
10	76.3011.01	0G3093	Distanzhalter 8mm	Spacer 8mm	D800/900	
11	82.1027.85	*	Bedienbl. Bain Marie W400, D800/900	Control panel Bain Marie W400, D800/900	a g k	
	82.1027.30	*	Bedienbl. Bain Marie W500, D800/900	Control panel Bain Marie W500, D800/900	b c h i l m	
	82.1049.72	*	Bedienbl. INOX Bain Marie D850	Control panel INOX Bain Marie D850	e f	
12	1 701 1072	0G6833	Senkkopfschraube M5x12	Countersunk screw M5x12	1/1 GN	
13	82.7009	0G6247	Dichtung Drehgriff	Sealing for handle	1/1 GN	
14	82.9124.05	0G6373	Drehgriff mit Adapter 0°x6.0	Handle with adapter 0°x6.0	1/1 GN	
15	87.9204	0C2228	Sicherungshalter Schurter 6.3x32 500V	Fuse holder Schurter 6.3x32 500V	1/1 GN Marine	
16	82.9171	0TTR73	Sicherung 6.3x32 0.63A 500V	Fuse 6.3x32 0.63A 500V	1/1 GN Marine	
17	75.2012.01	0K5155	Sicherungsklemme	Fuse holder terminal	1/1 GN Marine	
	75.2012.02	0T2599	Sicherungsklemme Abschlusswand	Cover for fuse holder terminal	1/1 GN Marine	
18	712 344362.01	0G5814	Sicherung 5x20 1A	Fuse 5x20 1A	1/1 GN Marine	
19	82.9065	0G6668	Klemme FV122 V/V	Terminal FV122 V/V	1/1 GN	
	82.9101		Kabel: FV122 V/V - Erdungsbolzen	Cable: FV122 V/V - ground bolt	1/1 GN	
20	82.9103	0G6424	Kabel: Haupterdraht L400 6mm²	Cable: main earthing L400 6mm²	1/1 GN	
21	82.3029	*	Halteblech	Metal support	1/1 GN Marine	
22	82.9190	0G6874	Turoidal Autotransformator	Turoidal Autotransformer	1/1 GN Marine	
23	1 701 4003	0G3659	Unterlegscheibe M6	Washer M6	1/1 GN Marine	
24	1 701 5051	0G6753	Fächerscheibe M6	Fan washer M6	1/1 GN Marine	
25	1 701 2599	0K4604	Sechskantschraube M6x70	Hex bolt M6x70	1/1 GN Marine	
26	82.2810	0G6875	Kabelverschraubung PG16	Cable gland PG16	1/1 GN Marine	
27	82.9225		Gegenmutter PG16	Lock nut PG16	1/1 GN Marine	
	82.9100		Kabel: Potentiometer - Display L200	Cable: Potentiometer - Display L200	D800/900	
	82.9110		Kabel: Transformator - Display L450	Cable: Transformer - Display L450	D800/900	
	82.9108		Kabel: XO - Schalter - Transformator	Cable: XO - Switch - Transformer	D800/900	
	82.9109.01		Kabel: Schalter - Heizungen 1/IGN BM	Cable: Switch - Heating 1/IGN BM	1/1 GN	
	82.9231		Kabel: Bain Marie D850	Cable: Bain Marie D850	D850	
	82.9197		Kabel: Bain Marie 1/IGN Marine	Cable: Bain Marie 1/IGN Marine	1/1 GN Marine	

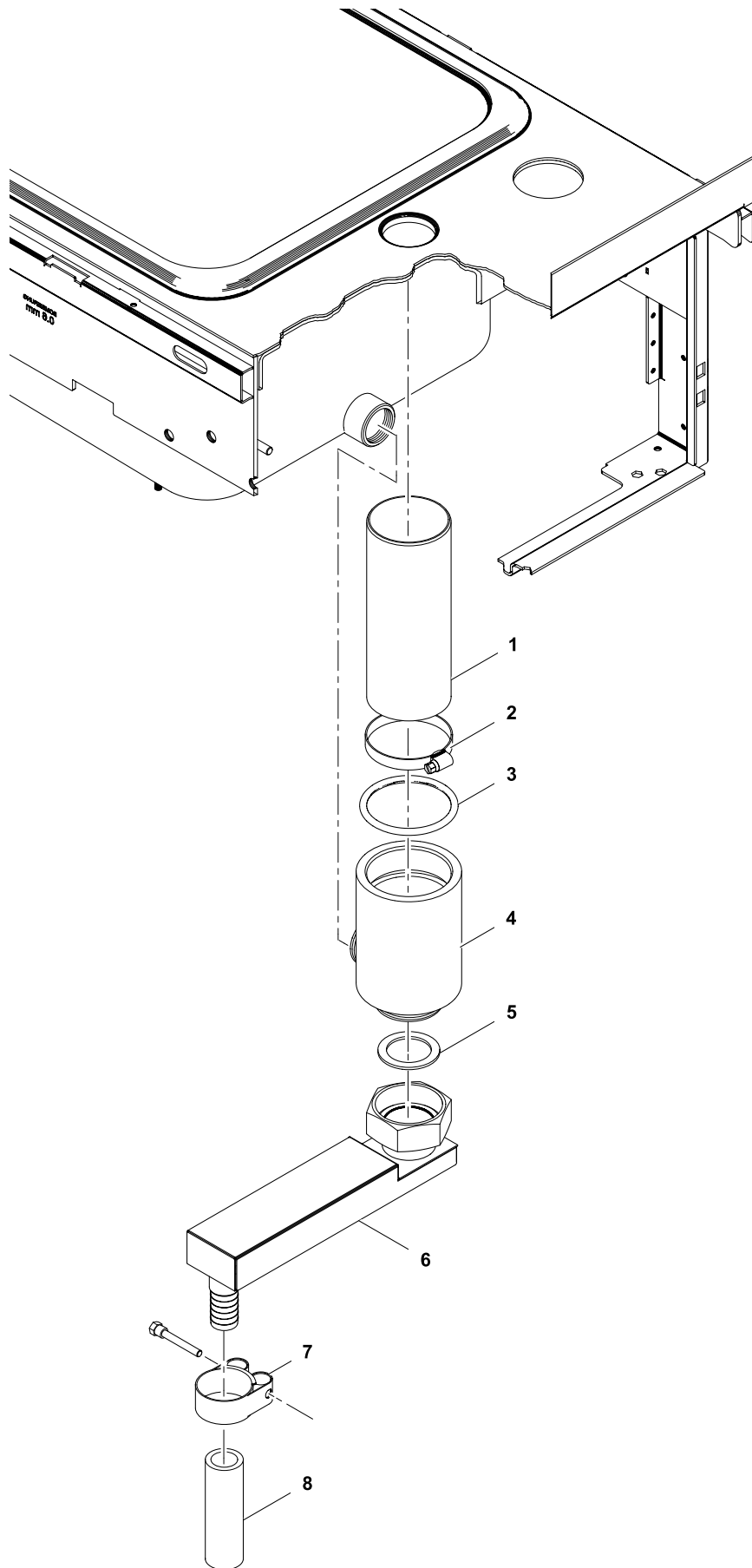


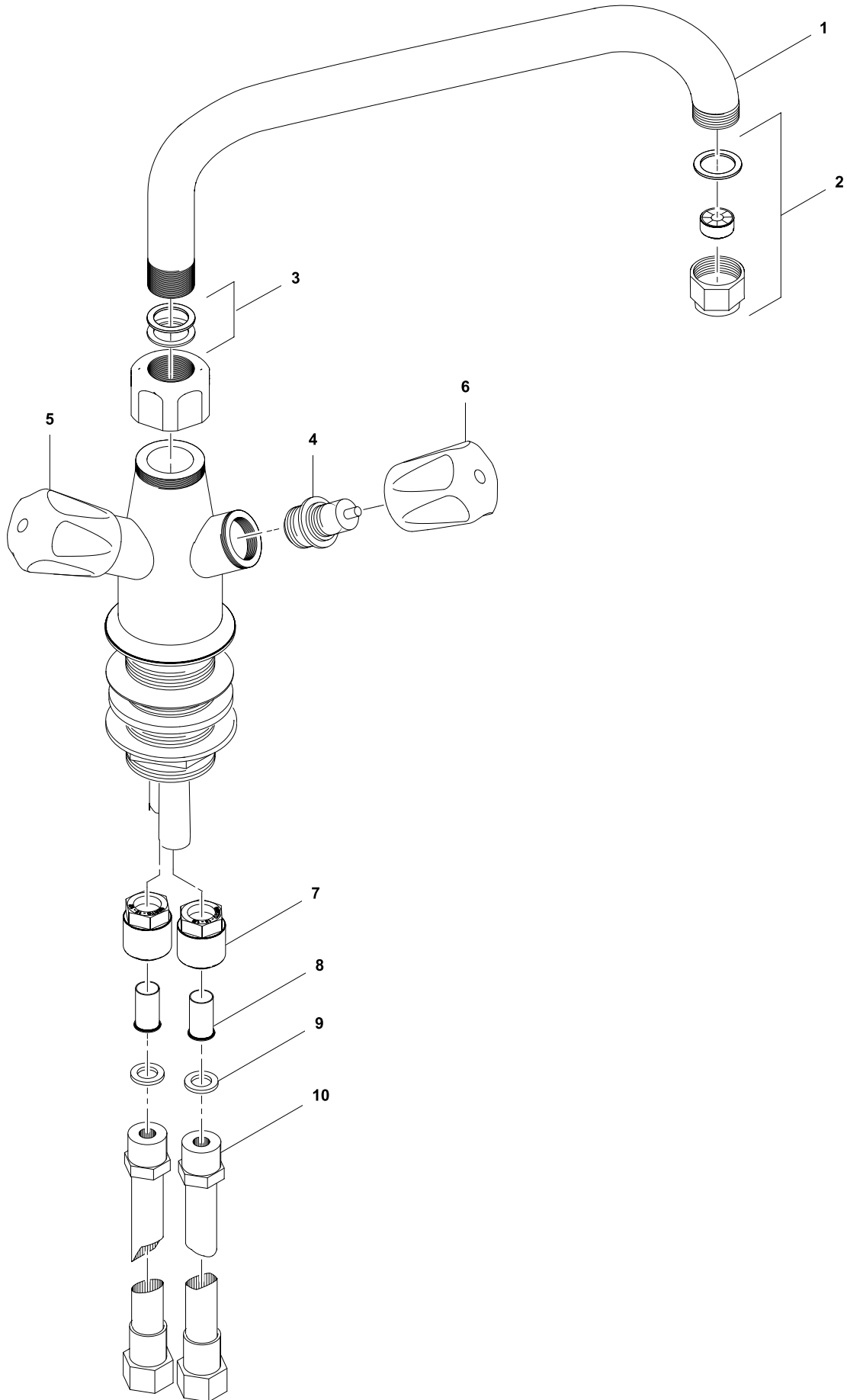
2	Alias	Code	Bezeichnung	Description	Ref.	Valid from Serial N°
1	82.3021	*	Elektrobox 800	Electrical compartment 800	2/1 GN	
2	82.3001	*	Standardventilationsbox links	Ventilation box left	2/1 GN	
3	82.3002	*	Standardventilationsbox rechts	Ventilation box right	2/1 GN	
4	712 044961.17	0KT854	Kabeltülle Ø25/Ø31/Ø35x10	Cable: sleeve Ø25/Ø31/Ø35x10	2/1 GN	
5	82.7093	056582	Halter Sicherung	Fuse holder	2/1 GN	
6	712 344362.01	0G5814	Sicherung 5x20 1A	Fuse 5x20 1A	2/1 GN	
7	82.9076	0G6317	Schalter off-lin 3/4 +Regler 93° +10K Poti	switch off-lin 3/4+control 93°+10K Potent	D800/900	
	1 115 1590	0G2764	Kapillarrohrregler	Capillary control	D850	
8	82.9030	0G6075	DC Power supply 2V	DC Power supply 2V	D800/900	
9	82.9115.02	0G6303	Eurotas Display Bain Marie	Eurotas display Bain Marie	D800/900	
	72.5938.04	0K1362	Anzeigelampe grün	Indicator light, green	D850	
	72.5938.08	0K1364	Einsteckfassung grün/gelb Ø10mm	Lamp holder, green/yellow, Ø10mm	D850	
10	76.3011.01	0G3093	Distanzhalter 8mm	Spacer 8mm	D800/900	
11	82.1027.86	*	Bedienbl. Bain Marie W800, D800/900	Control panel Bain Marie W800, D800/900	D800/900	
	82.1049.73	*	Bedienbl. INOX Bain Marie D850	Control panel INOX Bain Marie D850	D850	
12	1 701 1072	0G6833	Senkkopfschraube M5x12	Countersunk screw M5x12	2/1 GN	
13	82.7009	0G6247	Dichtung Drehgriff	Sealing for handle	2/1 GN	
14	82.9124.05	0G6373	Drehgriff mit Adapter 0°x6.0	Handle with adapter 0°x6.0	2/1 GN	
15	1 115 1757	0G4645	SCHÜTZ K3-14X027	Conductor K3-14X027	2/1 GN Marine	
16	75.2012.01	0K5155	Sicherungsklemme	Fuse holder terminal	2/1 GN Marine	
	75.2012.02	0T2599	Sicherungsklemme Abschlusswand	Cover for fuse holder terminal	2/1 GN Marine	
17	712 344362.01	0G5814	Sicherung 5x20 1A	Fuse 5x20 1A	2/1 GN Marine	
18	82.9177	0TTW84	Sicherungsklemme Weidmüller	Fuse holder terminal Weidmüller	2/1 GN Marine	
19	82.9219		Sicherung 6.3X32 12.0 AT 500V	Fuse 6.3X32 12.0 AT 500V	2/1 GN Marine	
20	87.9204	0C2228	Sicherungshalter Schurter 6.3x32 500V	Fuse holder Schurter 6.3x32 500V	2/1 GN Marine	
21	82.9218		Sicherung 6.3X32 6.30 AT 500V	Fuse 6.3X32 6.30 AT 500V	2/1 GN Marine	
22	82.9065	0G6668	Klemme FV122 V/V	Terminal FV122 V/V	2/1 GN	
	82.9101		Kabel: FV122 V/V - Erdungsbolzen	Cable: FV122 V/V - ground bolt	2/1 GN	
23	82.9103	0G6424	Kabel: Haupterd draht L400 6mm²	Cable: main earthing L400 6mm²	2/1 GN	
24	82.3029	*	Halteblech	Metal support	2/1 GN Marine	
25	82.9190	0G6874	Turoidal Autotransformator	Turoidal Autotransformer	2/1 GN Marine	
26	1 701 4003	0G3659	Unterlegscheibe M6	Washer M6	2/1 GN Marine	
27	1 701 5051	0G6753	Fächerscheibe M6	Fan washer M6	2/1 GN Marine	
28	1 701 2599	0K4604	Sechskantschraube M6x70	Hex bolt M6x70	2/1 GN Marine	
29	82.2810	0G6875	Kabelverschraubung PG16	Cable gland PG16	2/1 GN Marine	
30	82.9225		Gegenmutter PG16	Lock nut PG16	2/1 GN Marine	
	82.9100		Kabel: Potentiometer - Display L200	Cable: Potentiometer - Display L200	D800/900	
	82.9110		Kabel: Transformator - Display L450	Cable: Transformer - Display L450	D800/900	
	82.9108		Kabel: X0 - Schalter - Transformator	Cable: X0 - Switch - Transformer	D800/900	
	82.9109.02		Kabel: Schalter - Heizungen 2/IGN BM	Cable: Switch - Heating 2/IGN BM	2/1 GN	
	82.9231		Kabel: Bain Marie D850	Cable: Bain Marie D850	D850	
	82.9210		Kabel: Bain Marie 2/IGN Marine	Cable: Bain Marie 2/IGN Marine	2/1 GN Marine	



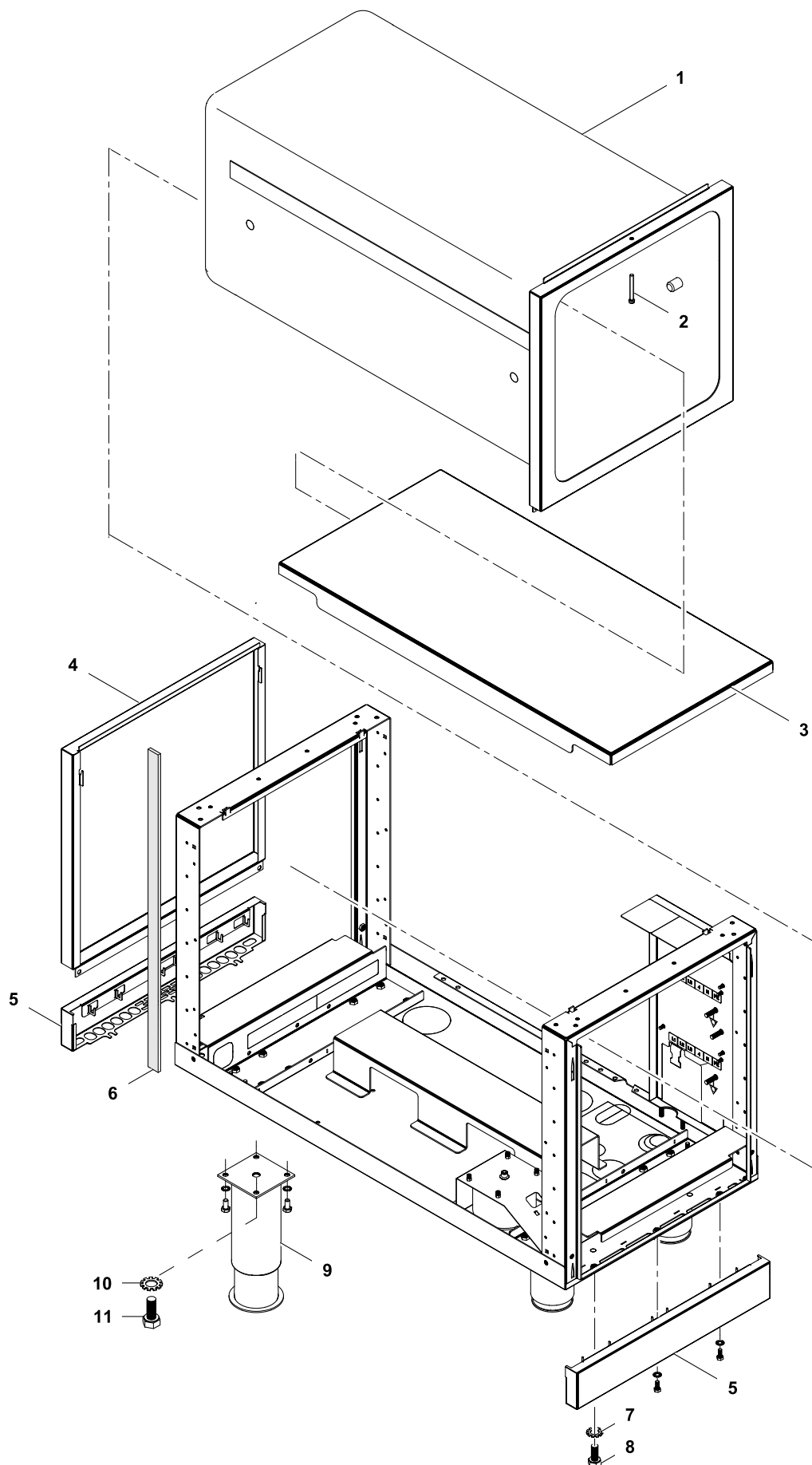
3	Alias	Code	Bezeichnung	Description	Ref.	Valid from Serial N°
1	82.2289 62.6219	0G6583	Einlegeboden 1/1GN Einlegeboden 2/1GN	False bottom 1/1GN False bottom 2/1GN	1/1 GN 2/1 GN	
2	72.0313	0K5782	Standrohr zu Ablauf	Stopper	all types	
3	82.7464	0C2496	Dichtband (Schaumstoff-Silikon, klebend)	Sealing strip	all types	
4	72.1278	0T2298	Isolation Fühlerhalter	Probe insulation	all types	
5	72.1096	0G4143	Fühlerhalter	Probe support	all types	
6	712 044120.05	0G3998	Keps-Mutter M5	Keps nut M5	all types	
7	1 115 1583	0K1334	Heizung 1500W / 400V	Heating element 1500W / 400V	all types	
8	1 201 2056	0K1338	Isolation Heizung	Insulation Heating element	all types	
9	62.3687	*	Gehäuse Heizung 1/1 GN	Casing for heating element 1/1 GN	1/1 GN	
	82.2452	*	Gehäuse Heizung 2/1 GN	Casing for heating element 2/1 GN	2/1 GN	
10	1 701 7060		Fächerscheibe M4	Fan washer M4	all types	
11	1 701 3004	0K4606	Sechskantmutter M4	Hex nut M4	all types	
12	712 044120.05	0G3998	Keps-Mutter M5	Keps nut M5	all types	
13	1 701 3008	0G6111	Sechskantmutter M5	Hex nut M5	all types	
14	1 701 7002	0G2923	Fächerscheibe M5	Fan washer M5	all types	

* Components on demand
* Teile auf Anfrage





5	Alias	Code	Bezeichnung	Description	Ref.	Valid from Serial N°
1	1 105 1257 62.6223.07	0G2974	Kit Mischbatterie Klarco (Pos. 1-6) Schwenkauslauf 3/4", 300x450mm	Kit Mixer tap Klarco (pos. 1-6) Swivel spout 3/4", 300x450mm	all types	
2	62.6223.01		Auslauf ohne Dripstop	Spout without drip stop	all types	
3	1 105 1265 62.6223.02	0G5273	Tropfschutz (nicht in Kit enthalten) Dichtungsringe	Drip stop (not included in kit) Sealing rings	all types	
4	62.6223.03		Ventileinsatz	Valve insert	all types	
5	62.6223.04		Griff Heißwasser	Knob hot water	all types	
6	62.6223.05		Griff Kaltwasser	Knob cold water	all types	
7	1 101 2075	0KX119	Anschluss G1/2"	Connection G1/2"	all types	
8	1 101 3797	0KE129	Stützhülse Ø15	Sleeve Ø15	all types	
9	712 044481.21	0G3610	Dichtung Ø18/11	Sealing Ø18/11	all types	
10	712 344893.02	0K5363	Panzerschlauch L1100 G1/2" / R1/2"	Armored hose L1100 G1/2" / R1/2"	all types	
	1 201 1813	0G3817	Kleber LOCTIE 577	Glue LOCTITE 577	all types	



6	Alias	Code	Bezeichnung	Description	Ref.	Valid from Serial N°
1	83.3704.01	0G6888	Korpus H3 W400	Corpus H3 W400		k
	83.3704.09	???	Korpus H3 W500	Corpus H3 W500		l m
	83.3704.04	0G6889	Korpus H3 W800	Corpus H3 W800		n
2	1 701 1150		Flachkopfschraube M5 x 50	Flat head screw M5 x 50		k l m n
3	83.3718.01	0G6890	Tablar H3 W400	Shelf H3 W400		k l m
	83.3718.02	0G6890	Tablar H3 W700	Shelf H3 W700		n
4	82.1102.03		Rückwand 400x700	Back panel 400x700		k
	82.1102.04		Rückwand 500x700	Back panel 500x700		l m
	82.1102.07		Rückwand 800x700	Back panel 800x700		n
5	82.1140.04		Anschlussdeckel W400	Bottom panel W400		k
	82.1140.05		Anschlussdeckel W500	Bottom panel W500		l m
	82.1140.08		Anschlussdeckel W800	Bottom panel W800		n
6	82.7467	0C7307	Dichtung 5mm	Sealing sides 5mm		k l m n
7	1 701 7002	0G2923	Fächerscheibe M5	Fan washer M5		k l m n
8	1 701 2579	0G4020	Sechskantschraube M5x16	Hex bolt M5x16		k l m n
9	83.3728	0G6886	Stellfuß 2" Marine 145-252mm	Adjustable feet 2" Marine 145-252mm		k l m n
10	1 701 5051	0G6753	Fächerscheibe M6	Fan washer M6		k l m n
11	1 701 2600	OKT919	Sechskantschraube M6x12	Hex bolt M6x12		k l m n

