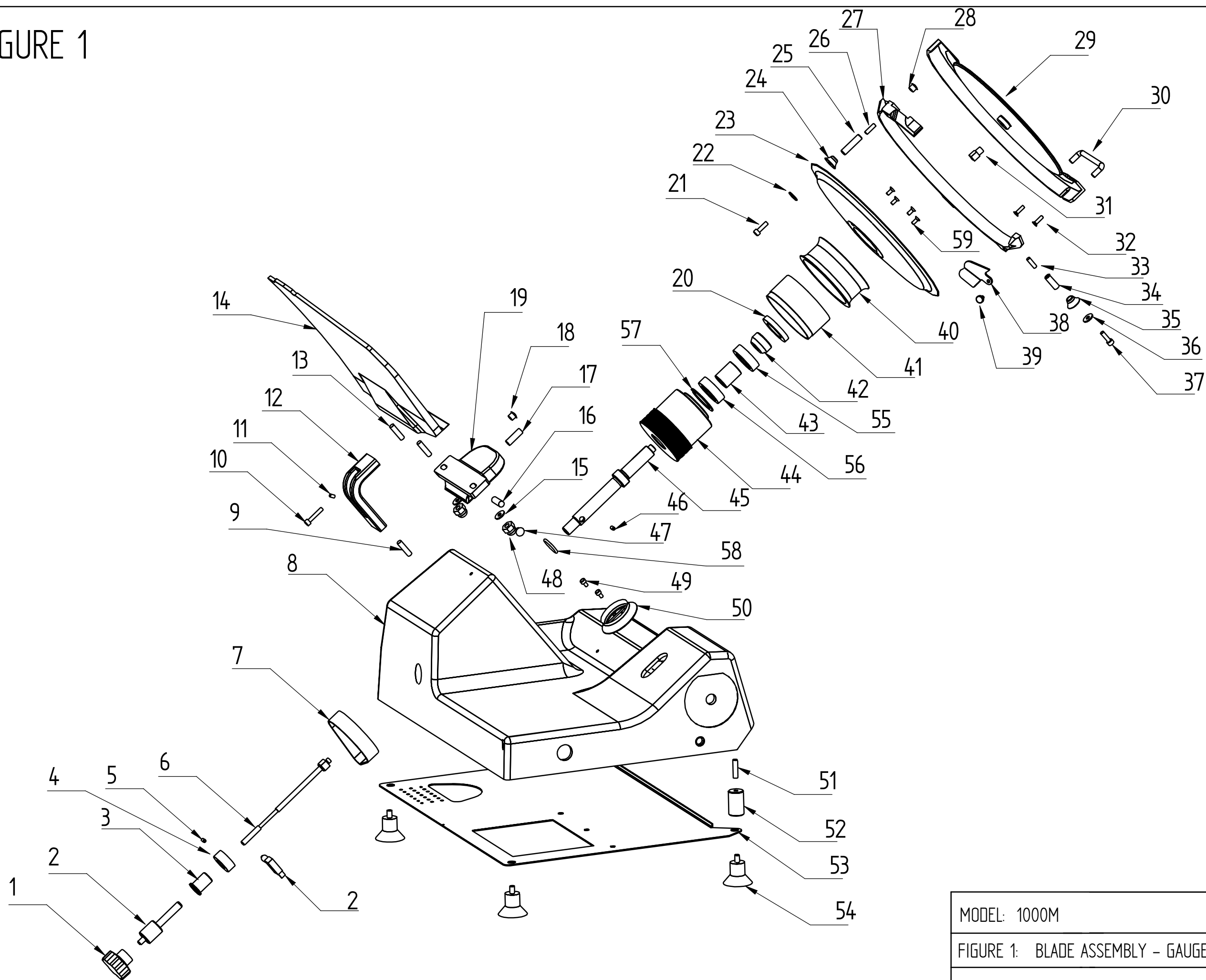


FIGURE 1



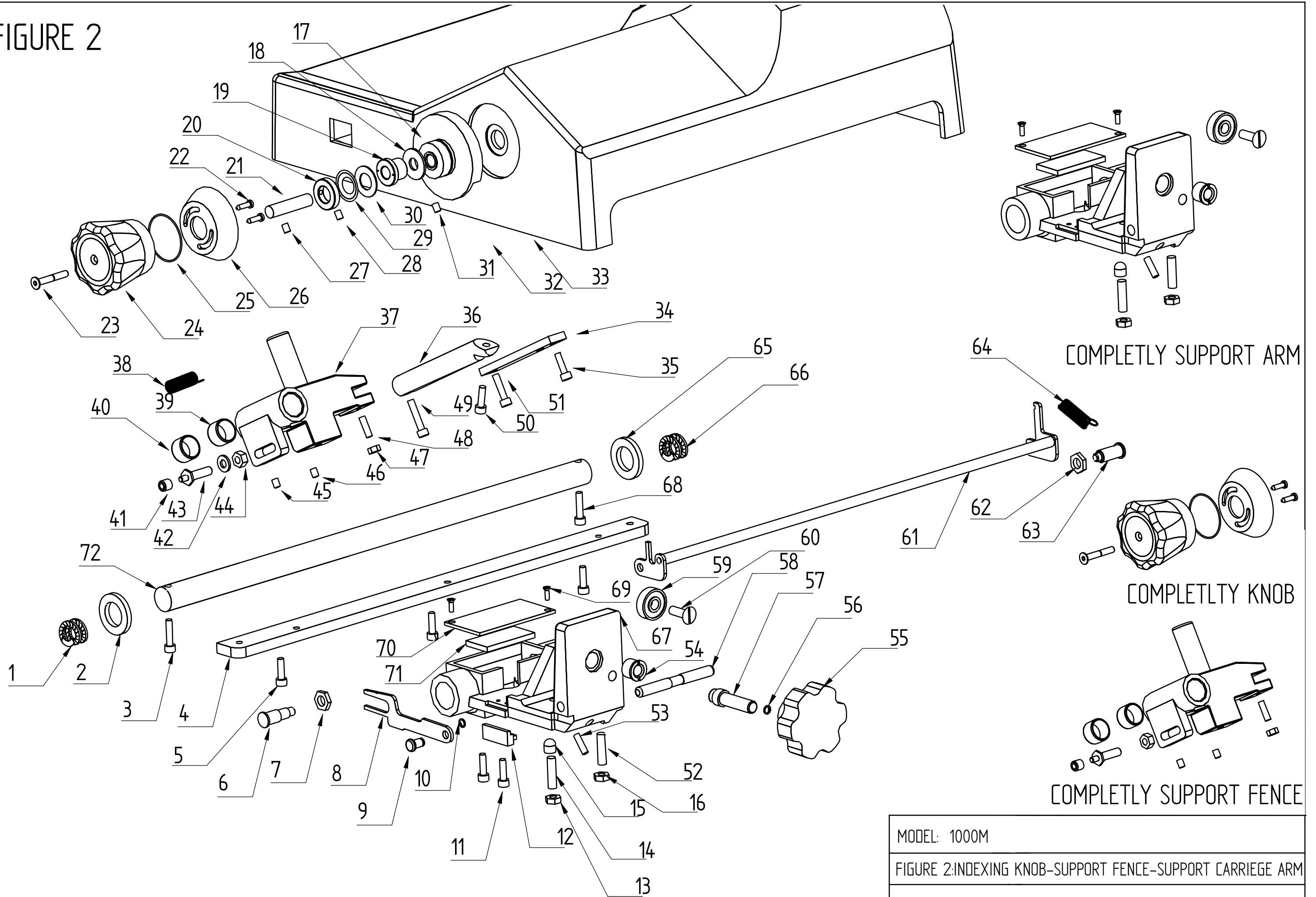
MODEL: 1000M

FIGURE 1: BLADE ASSEMBLY - GAUGE PLATE - BASE - DEFLECTOR

EDITION: 1° DATE 12-12

No	DESCRIPTION	Q.	PART #	NOTE
1	KNOB	1	4090304	
2	SHAFT BLADE	1	4100052	
3	BUSHING LOCK	1	4100056	
4	RING SUPPORT MICRO SWITCH	1	4100818	
5	STUD M5X8	1	UNI 5929 DIN 916	
6	SHAFT COVER BLADE	1	4100682	
7	BELT	1	3030124	
8	HOUSING	1	4020771	
9	SHAFT BRACKET BLADE GUARD	1	4100935	
10	SCREW M5X18	1	UNI 5931 DIN 912	
11	STUD M6X6	1	UNI 5929 DIN 916	
12	BRACKET BLADE GUARD	1	4020322	
13	STUD M8X30	2	UNI 5923 DIN 913	
14	GAUGE PLATE	1	4020723	
15	WASHER M6	2	UNI 6593	
16	STUD M10X16	1	UNI 5929 DIN 916	
17	STUD M10X16	1	UNI 5929 DIN 916	
18	TAP	1	3040127	
19	GAUGE PLATE ADJUSTMENT ARM	1	205V109 + 403E025	
20	SEAL RING	1	3030203	
21	SCREW M5X 18	2	UNI 5931 DIN 912	
22	WASHER M6	4	UNI 6593	
23	BLADE	4	3025111	
24	GASKET	1	4090010	
25	SHAFT SUPPORT BLADE GUARD	1	4101441	
26	STUD M5X20	1	UNI 5929 DIN 916	
27	BLADE GUARD	1	4020462	
27	BLADE GUARD	1	4020804	START 11-2014
28	TAP	1	3040127	
29	COVER BLADE	1	4020178	
30	KNOB	1	4090300	
31	SHAFT CENTER BLADE GUARD	2	4101064	
32	SCREW M4X10	2	UNI 6109 DIN 936	
33	STUD M5X12	2	UNI 5929 DIN 916	
34	SHAFT SUPPORT BLADE GUARD	2	4101434	
35	GASKET	2	4090010	
36	WASHER	1	UNI 6593	
37	SCREW M5X14	1	UNI 5931 DIN 912	
38	DEFLECTOR	2	405BC07	
39	SHAFT LOKING DEFLECTOR	1	4101445	
40	GASKET	1	4090004	
40	GASKET	1	4090001V	START 11-2014
41	RING SUPPORT GASKET	1	4100692	
42	BUSHING CENTER COVER BLADE	4	4101068	
43	SPACER	1	4100153	
44	BLADE SUPPORT	1	4010349	
45	SHAFT SUPPORT BLADE	1	4101114	
46	STUD M6X8	1	UNI 5929 DIN 916	
47	TAP	1	3040127	
48	BLIND NUT M8	2	UNI 5721 DIN 1587	
49	SCREW TCTC M6X10	2	UNI 6107 DIN84-A	
50	GASKET	1	4090003	
51	STUD M8X30	1	UNI 5923 DIN 913	
52	EXTENSION	1	406BA03	
53	BOTTOM	1	405DC75 + 405FC94	
54	FEET	1	3030403	
55	BEARING 6204 2RS	1	3030306	
56	BEARING 6204 2RS	1	3030306	
57	RING LOKING D.47	1	UNI 3654	
58	O-RING	1	3030525	
001	COMPLETLY SUPPORTO BALDE	1	2020804	

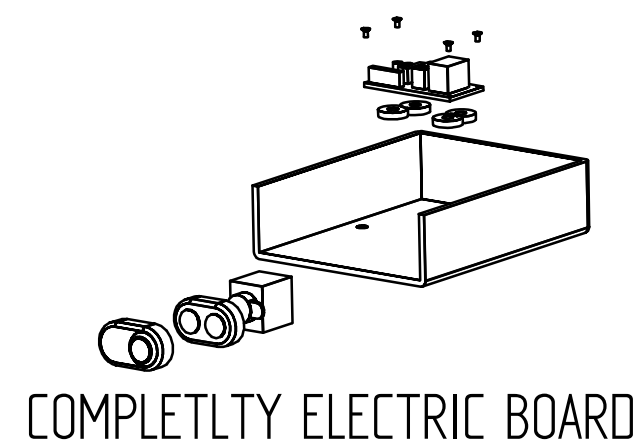
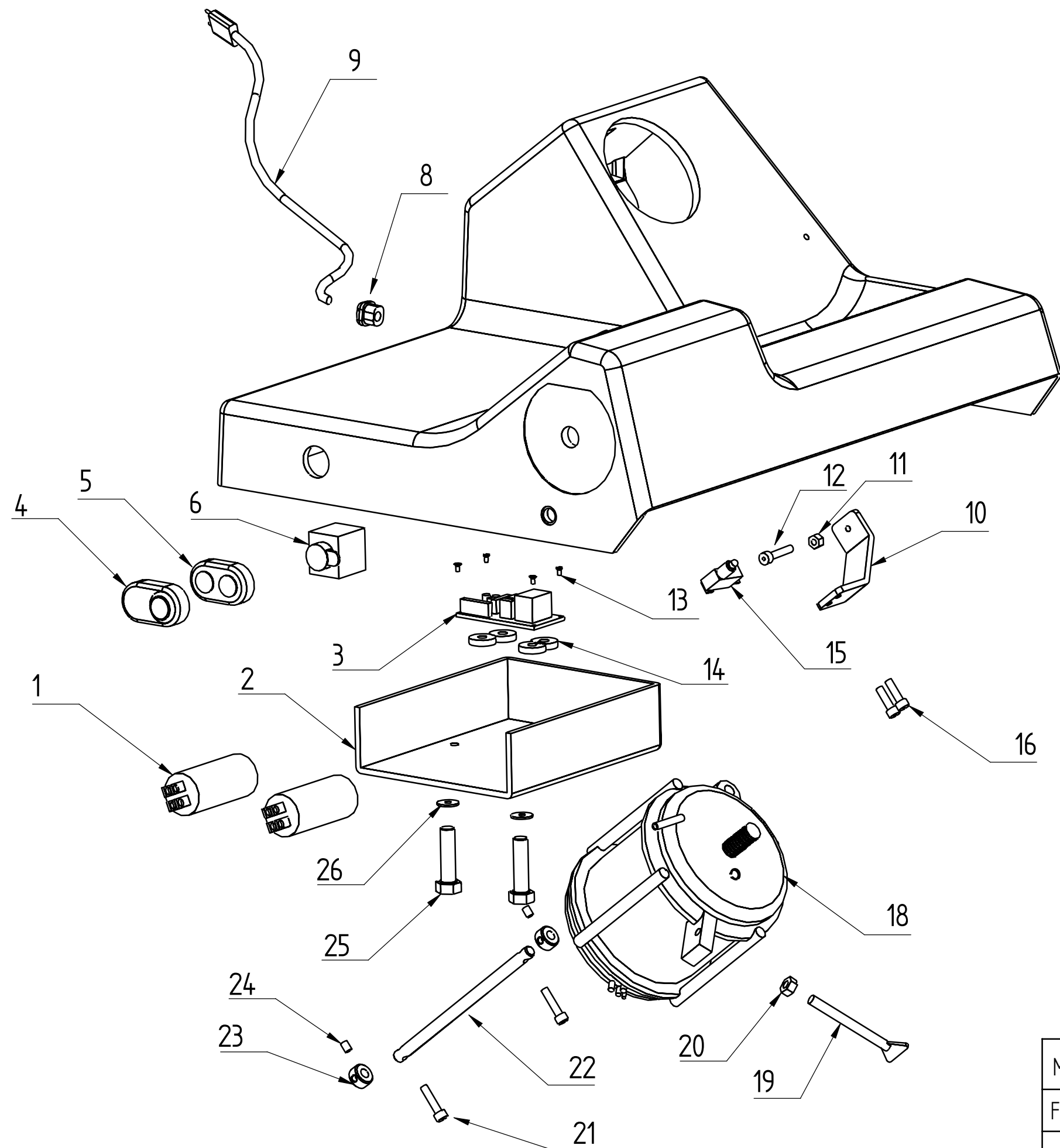
FIGURE 2



MODEL: 1000M
FIGURE 2:INDEXING KNOB-SUPPORT FENCE-SUPPORT CARRIEGE ARM
EDITION: 1° DATE 12-12

No	DESCRIPTION	Q.	PART #	NOTE
1	SPRING	1	3031235	
2	WASHER RUBBER	1	3030514	
3	SCREW M6 X 35	2	UNI 593 DIN 912	
4	RECTANGULAR BAR	1	4070309	
5	SCREW M6 X 16	3	UNI 593 DIN 912	
6	SHAFT SUPPORT RATCHET	1	4100870	
7	SPECIAL NUT	1	4100800	
8	RATCHET TILT SYSTEM	1	405FC06	
9	SHAFT SUPPORT RATCHET TILT SYSTEM	1	4100866	
10	RING FIXING D.7	1	UNI	
11	SCREW M5 X 12	2	UNI 593 DIN 912	
12	DIRECTION RATCHET TILT SYSTEM	1	405CB24	
13	NUT M10	1	UNI 5589 DIN 936	
14	STUD SUPPORT TAP	1	4100066	
15	TAP	1	4100776	
16	NUT M8	1	UNI 5589 DIN 936	
17	CAMME	1	4090163	
18	NYLON WASHER	1	4101470	
19	BUSHING	1	4101443	
20	SPECIAL NUT	1	4101437	
21	INDEXING KNOB SHAFT	1	4101348	
22	SCREW D 4,2 X 13	2	STAINLESS STEEL UNI 6947	
23	SCREW M5x18	1	STAINLESS STEEL UNI 6110 DIN 964	
24	KNOB	1	AVAILABLE IN THE PART# 2V30012	
25	O-RING	1	AVAILABLE IN THE PART# 2V30012	
26	GRADUATED DISK	1	AVAILABLE IN THE PART# 2V30012	
27	STUD	1	4101449	
28	STUD M5X6	1	UNI 5929 DIN 916	
29	SPRING 25 12 0,9	1	DIN 2093	
30	NYLON WASHER	1	4101444	
31	STUD M6X8	1	UNI 5929 DIN 916	
32	SCREW	1	STAINLESS STEEL UNI 6110 DIN 964	
33	WASHER M6	1	4100491	
34	SUPPORT FENCE AJSTMENT	1	405CB32	
35	SCREW M6 x 16	1	UNI 5931 DIN 912	
36	SHAFT ,FENCE ADJUSTMENT	1	4100823	
37	SUPPORT FENCE	1	403E025	
38	SPRING	1	3031236	
39	BUSHING	1	3030809	
40	BUSHING	1	3030809	
41	ROLLER	1	4100525	
42	WASHER M8	1	UNI 6592 DIN 125-A	
43	ROLLER SHAFT	1	4100102	
44	NUT M8	1	UNI 5587	
45	STUD M6 x 6	1	DIN 5929	
46	STUD M6 x 6	1	DIN 5929	
47	NUT M6	1	UNI 5587	
48	STUD	1	4101449	
49	SCREW M6 x 25	1	UNI 5931 DIN 912	
50	SCREW M6 X 18	1	UNI 5931 DIN 912	
51	SCREW M6 x 16	1	UNI 5931 DIN 912	
52	STUD M8 X 12	1	UNI 5929	
53	STUD M6 X 8	1	UNI 5929	
54	BUSHING FIXING ARM	1	4101447	
55	KNOB	1	4090305	
56	RING RADIAL FIXING D.10	1	UNI 7434	
57	SHAFT ARM KNOB	1	4101448	
58	SHAFT SUPPORT ARM TILT SYSTEM	1	4100253	
59	BEARING 6200 2RS	1	3030302	
60	SCREW M10 X 16 + BUSHING BEARING	1	UNI6109 + 4100115	
61	RACHET	1	203V006	
62	SHAFT SUPPORT RATCHET	1	4100870	
63	SPECIAL NUT	1	4100800	
64	SPRING	1	3031266	
65	WASHER RUBBER	1	3030514	
66	SPRING	1	3031235	
67	BUSHING ARM	1	4010632	
68	SCREW M6 X 35	2	UNI 593 DIN 912	
69	SREEW M5 X 10?	2	UNI 6109	
70	CARTER BUSHING	1	4090167	
71	FIBRE	1	A001676	
72	BAR	1	4070209	
001	COMPLETELY SUPPORT ARM	1	2030105	
002	COMPLETELY KNOB	1	2V30004R	
003	COMPLETELY SUPPORT FENCE	1	20500014	

FIGURE 3



MODEL: 1000M

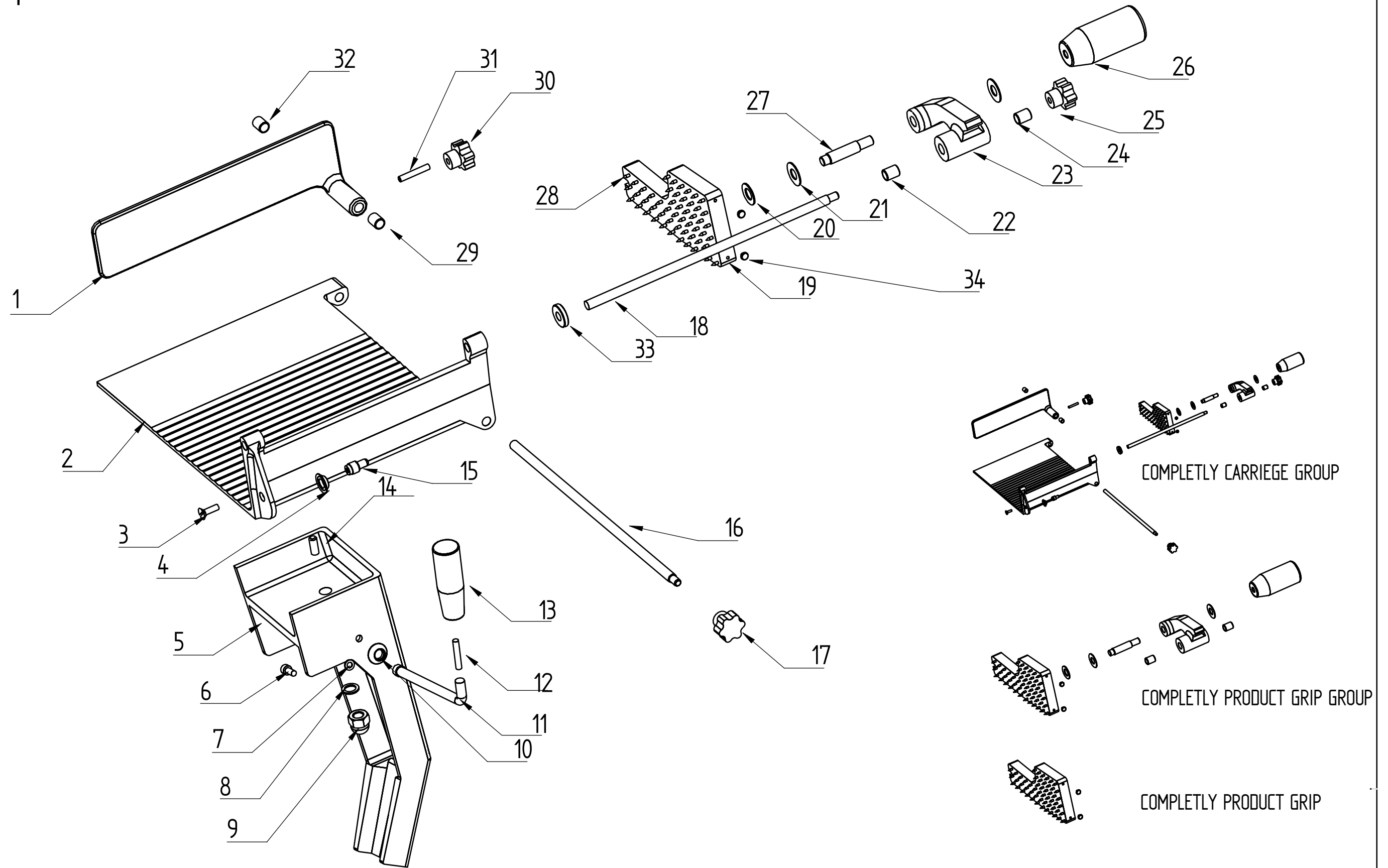
FIGURE 5: MOTOR - CABLE - SWITCH

EDITION: 1° DATE 12-12

"FASTMATIC 330 Gravity Slicers"

No	DESCRIPTION	Q.	PART #	NOTE
1	CAPACITOR	2	3040301	
2	PALSTIC BOX	1	AVAILABLE IN THE PART# 4090100 V220/50-60/1	
3	ELECTRIC BOARD	1	AVAILABLE IN THE PART# 4090100 V220/50-60/1	
4	COVER SWITCH	1	NOT AVAILABLE	
5	SWTCH	1	AVAILABLE IN THE PART# 3040145	
6	CONTACT SWITCH	1	AVAILABLE IN THE PART# 3040145	
8	STRAIN RELIEF	1	3040626	
9	CABLE	1	3040501 V220/50-60/1	
10	BRACKET	1	405CB20	
11	NUT M6	2	UNI 5588	
12	SCREEW M6X30	1	UNI 5931	
13	SCREEW	2	UNI 6954	
14	RUBBER WASHER	2	3030500	
15	MICRO SWITCH	1	3040214	
16	SCREEW M6X12	2	UNI 5931	
18	MOTOR 0,5 HP	1	3010151 V220/50-60/1	
19	SCREEW M8 X 50	1	UNI 5449	
20	NUT M8	1	UNI 5588	
21	SCREEW M5X16	1	UNI 5931	
22	SHAFT MOTOR SUPPORT	1	4100846	
23	BUSHING MOTOR BLOCK	2	4100482	
24	STUD M5X8	2	UNI 5929	
25	SCREEW M6 X 45	2	UNI 5737	
26	WASHER M6	2	UNI 6593	
001	COMPLETLTY ELECTRIC BOARD V220/50-60/1	1	4090100	ED.1 12-12

FIGURE 4



MODEL: 1000M

FIGURE 4: CARRIEGE TRAY AND CARRIEGE TRAY SUPPORT

EDITION: 1° DATE 12-12

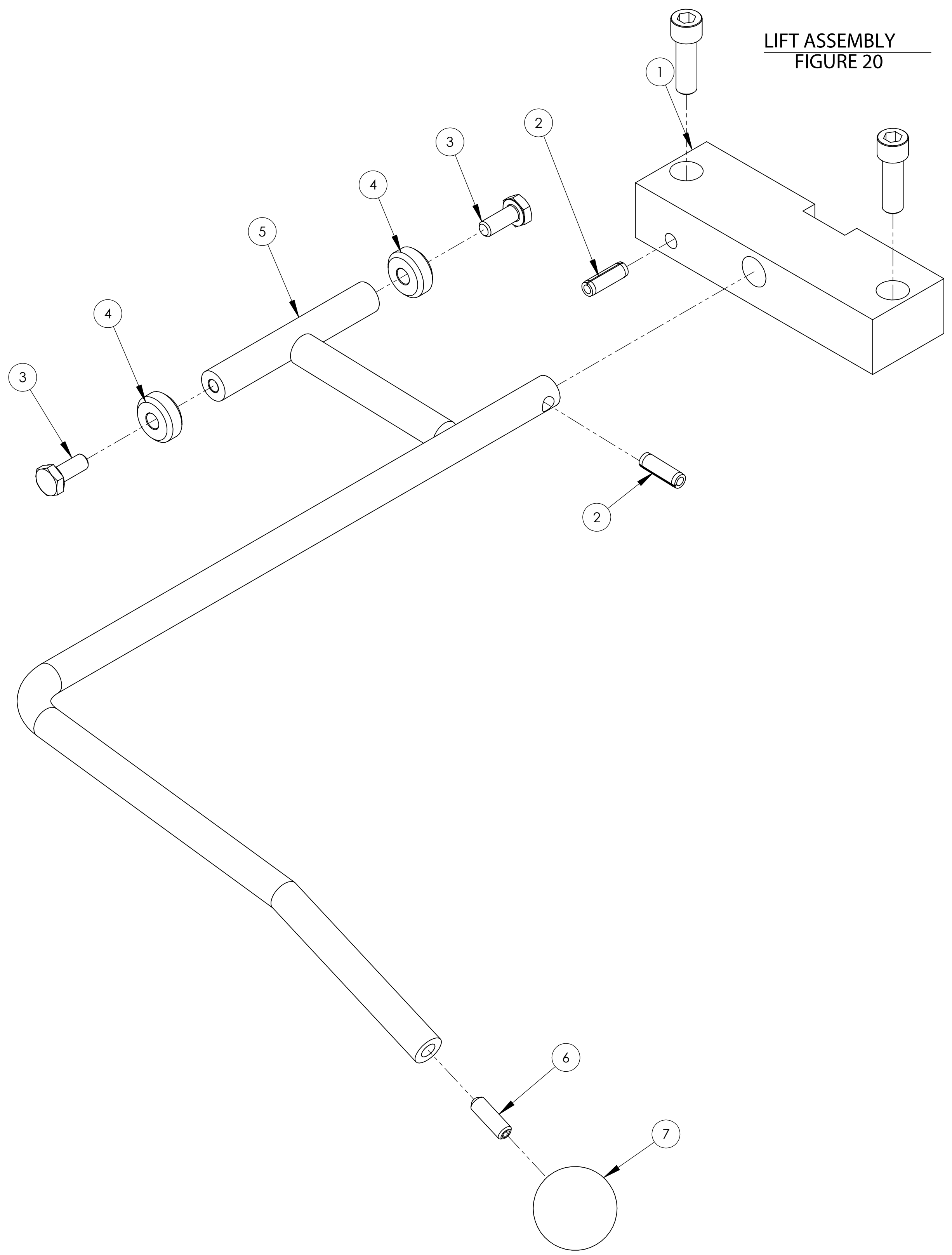
FIGURE 4: CARRIEGE TRAY AND CARRIEGE TRAY SUPPORT

"MODEL FASTMATIC 330 Gravity Slicers"

No	DESCRIPTION	Q.	PART #	NOTE
1	MEET FENCE	1	4020305	
2	CARRIEGE TRAY	1	4020773	
3	SCREEW M5X12	1	STAINLEES STEEL UNI 6109 DIN963	
4	GASKET	1	4090010	
5	CARRIEGE TRAY SUPPORT	1	4020761	
6	SCREEW M6X14	1	GALVANIZED STEEL UNI 5739 DIN 933	
7	WASHER M6	1	C60 UNI 8842-4 DIN 6798-A	
8	WASHER M10	1	GALVANIZED STEEL UNI 6593 DIN 9021	
9	NUT M10	1	GALVANIZED STEEL UNI 5721 DIN 1587	
4	GASKET	1	4090010	
11	LEVER	1	4101433	
12	STUD M6X30	1	STAINLEES STEEL UNI5923 DIN 913	
13	KNOB	1	4090367	
19	PRODUCT GRIP	1	4020760	
20	SPRING	1	4101461	
22	BUSHING	1	3030825	
23	BRACKET	1	4020043	
24	BUSHING	1	3030825	
25	KNOB M8	1	4090302	
26	HEAVY KNOB	1	4100211	
26	PLASTIC BLACK KNOB	1		
27	SHAFT HEAVY KNOB	1	4101499 + 4060141	
28	PINS	19	AVAILABLE IN THE PART# 003	
29	BUSHING	1	3030825	
30	KNOB M8	1	4090302	
31	SETSCREW	1	4100205	
32	BUSHING	1	3030825	
33	POLYURETHANE WASHER	1	3030519	
34	NYLON TAP	9	4100780	

No	DESCRIPTION	Q.	PART #	NOTE
750	PERNO CENTRALE AFFILATOIO	1	4101015	
751	RONDELLA MAGNETE optional	1	4101085	
752	VITE FISS. RONDELLA optional	1	7000629	
753	MAGNETE optional	1	3040702	
754	CORPO AFFILATOIO	1	503A073	
755	BRONZINE AFFILATOIO	2	4100999	
756	PERNI AFFILANTI E LEVAFILO	2	4100997	
757	ANELLI D'ARRESTO	2	7003608	
758	MOLA LEVAFILO	1	3030708	
759	RONDELLA	2	7003806	
760	DADI FISS. MOLE	2	7004006	
761	MOLA AFFILANTE	1	3030711	
762	ANELLO D'ARRESTO	2	7003608	
763	MOLLA BRONZINA	2	3031249	
764	PERNI DI SPINTA	2	4101001	
765	LEVA MOLA AFFILANTE	1	405FC53	
766	VITE FISS. LEVE	2	4101003	
769	MOLLA TRAZIONE	1	3031275	
770	VITE FISS. MOLLA	1	7003734	
771	LEVA MOLA LEVAFILO	1	405FC51	
772	DADO FISS. AFFILATOIO	1	4100103	
773	COPRI AFFILATOIO	1	4020145	
774	RONDELLA	1	7003808	
775	DADO FISS. AFFILATOIO	1	7000483	
776	VOLANTINO FISS. AFFILATOIO	1	4090322	
777	RONDELLA PERNO CENTRALE	1	4100479	
778	PARAPOLVERE	1	4101107	
0175	GRUPPO AFFILATOIO DA N° 754 A N° 772	1	2070409	
0175	GRUPPO AFFILATOIO COMPLETO ALL THE POSITION / TUTTE LE POSIZIONI	1 1	2070409 2070410	

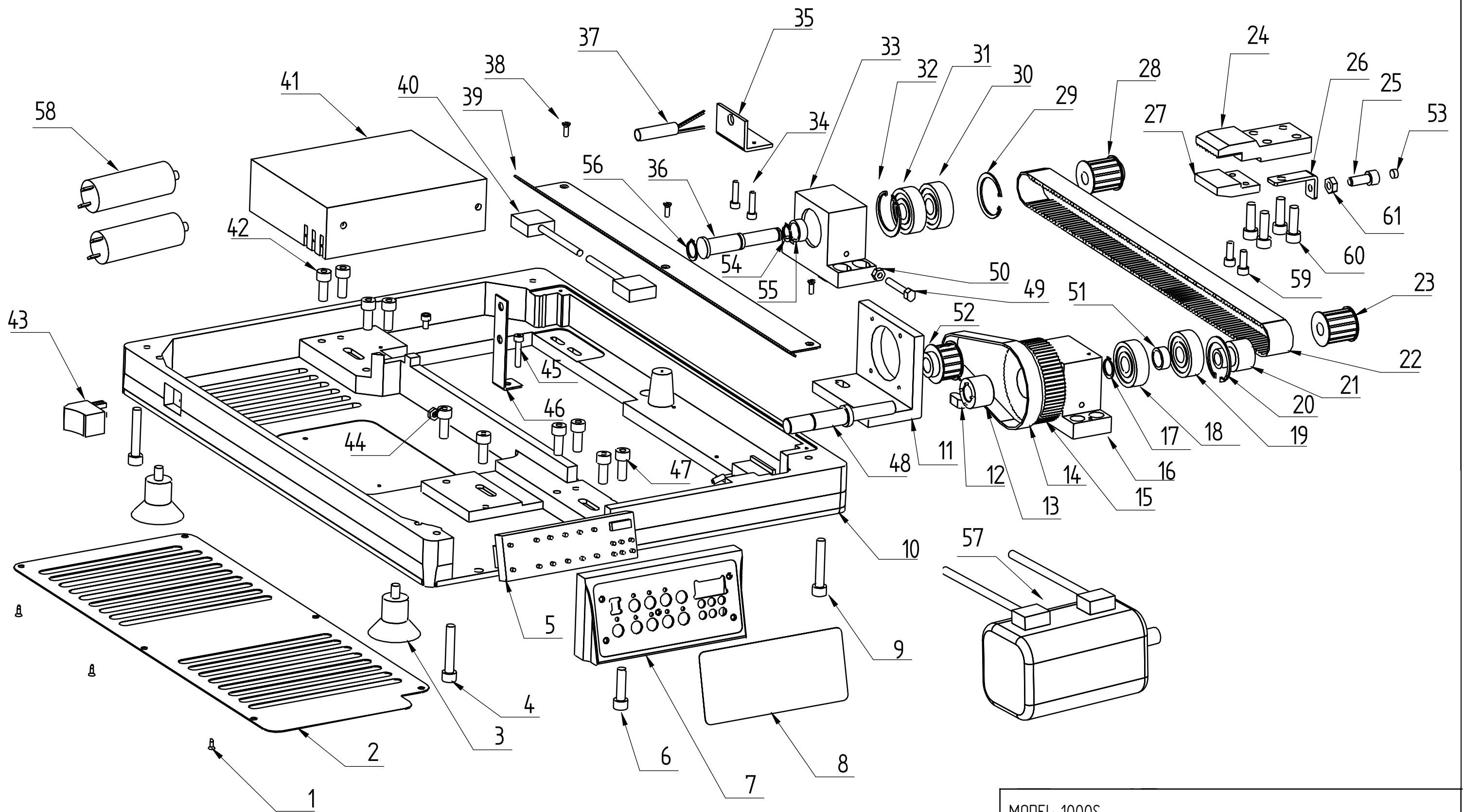
LIFT ASSEMBLY
FIGURE 20



"FASTMATIC 330 Gravity Slicers"

No	DESCRIPTION	Q.	PART #	NOTE
1	LIFT ASSEMBLY SUPPORT	1	405CB89	
2	PIN D.6 X 20	1	UNI 6873	
3	SCREEW M6 X 30	1	UNI 5737	
4	NYLON BEARING	1	4101408	
5	LEVER	1	2V30021	
6	STUD M12 X 25	1	UNI 4766	
7	KNOB	1	4090381	
001	COMPLETELY LIFT ASSEMBLY	1	2V30022R	ED.1 12-12

FIGURE 7



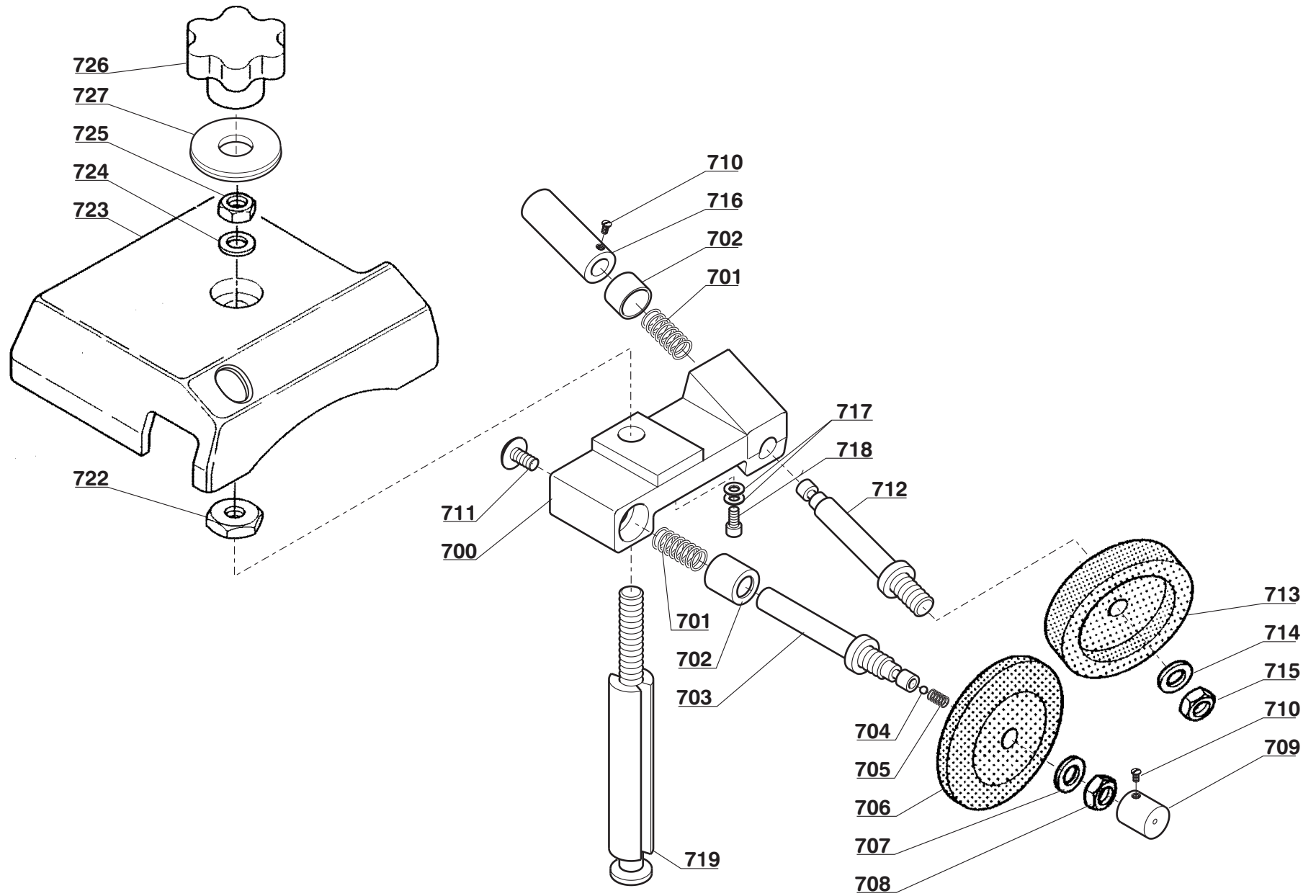
MODEL: 1000S
FIGURE 5: AUTOMATISM - DRIVER - CONTROL PANEL
EDITION: 1° DATE 12-12

No	DESCRIPTION	Q.	PART #	NOTE
1	SCREEW M5X10	6	7900021	
2	BOTTOM COVER	1	405FC74 A	
3	FEET	4	3030400	
4	SCREEW M8X50	4	UNI 5931	
5	CONTROL PANEL ELECTRIC BOARD	1	3040222	
6	SCREEW M8X20	2	UNI 5931	
7	CONTOL PANEL SUPPORT	1	406CB60	
8	CONTROL PANEL LABEL	1	3040191	
9	SCREEW M8X50	4	UNI 5931	
10	BOTTOM SUPPORT AUTOMATISM	1	AVAILABLE IN THE PART# 4020772	
11A	MOTOR BRUSHLESS 220/50-60/1		3010154	
11	MOTOR BRUSHLESS SUPPORT	1	405FC70	
12	KEY 8X7X20	1	UNI 6604-A	
13	SHRINK DISC RCK61	1	4101260	
14	BELT	1	3030136	
15	PULLEY	1	4101245	
16	SUPPORT PULEY FRONT	1	4101248	
17	STOP RING D.15	1	UNI 7435	
18	BEARING 6302 ZZ	1	3030324	
19	BEARING 6302 ZZ	1	3030324	
20	STOP RING D.35	1	UNI 3654	
21	SHRINK DISC RCK 80	1	4101261	
22	BELT AUTOMATISM	1	3030132	
23	FRONT PULLEY	1	4101243	
24	CALIPER TOP DRIVE	1	405CB87	
25	SPECIAL SCREEW	1	4101403	
26	CORNER MOUNT MAGNET	1	405FC93	
27	CALIPER LOVER DRIVE	1	405CB86	
28	PULLEY REAR	1	4101244	
32	STOP RING D.35	1	UNI 3654	
33	SUPPORT PULEY REAR	1	4101247	
34	SCREEW M5X16	2	UNI 5931	
35	CORNER SUPPORT SENSOR LIMIT	1	4101251	
38	SREEW M6X10	3	UNI 6109	
39	LOCKING PLATE	1	405FC73 A	
40	CABLE DRIVE - CONTROL PANEL 220 /50-60/1	1	AVAILABLE IN THE PART# 3040222	
41	DRIVE 220/50- 60 / 1	1	<u>CONTACT THE MANUFACTURER</u>	
42	SCREEW M8X20	4	UNI 5931	
43	GENARAL SWITCH	1	3040184	
44	SCREEW M8X20	2	UNI 5931	
45	SCREEW M6X16	1	UNI 5931	
46	SUPPORT PLATE CAPACITORS	1	405FC83	
47	SCREEW M8X20	4	UNI 5931	
48	SHAFT FRONT PULLEY	1	4101241	
49	SCREEW M6X30	1	UNI 5739	
50	NUT M6	1	UNI 5588	
51	FRONT SPACER	1	4101242	
52	MOTOR PULLEY	1	4101246	
53	MAGNET	1	3040702	
54	STOP RING D.12	1	UNI 3654	
55	LOVER SPACER	1	4101242	
56	STOP RING D.15	1	UNI 3654	
57	BRUSHLESS MOTOR	1	<u>CONTACT THE MANUFACTURER</u>	
58	CAPACITOR 8mF	2	3040316	

ED.1 12-12

ED.1 12-12

700 VS



GRUPPO 700 VS

No	DESCRIZIONE	Q.	MOD. L. 300 VERTICALE
700	CORPO AFFILATOIO	1	403A074
701	MOLLA	2	3031204
702	PARAPOLVERE	2	4100069
703	PERNO LEVAFILO	1	4100273
704	SFERA	2	3031321
705	MOLLA	2	3031205
706	MOLA LEVAFILO	1	3030709
707	RONDELLA	2	3031305
708	DADO	1	7000483
709	PULSANTE LEVAFILO	1	4100625
710	VITE FISS. PULSANTI	2	4100594
711	VITE FISS. PERNO LEVAFILO	1	7900021
712	PERNO AFFILANTE	1	4100275
713	MOLA AFFILANTE	1	3030716
714	RONDELLA	1	7003806
715	DADO	1	7000463
716	PULSANTE AFFILANTE	1	4100625
717	RONDELLA PER VITE	1	7003805
718	VITE DI REGOLAZIONE	1	3031334
719	PERNO CENTRALE AFFILATOIO	1	4101015
722	DADO FISS. AFFILATOIO	1	4100103
723	COPRI AFFILATOIO	1	4020132
724	RONDELLA	1	7003808
725	DADO FISS. AFFILATOIO	1	7000483
726	VOLANTINO FISS. AFFILATOIO	1	4090302
727	RONDELLA VOLANTINO	1	4100503
0170	GRUPPO AFFILATOIO DA N° 700 A N° 718	1	2070103