

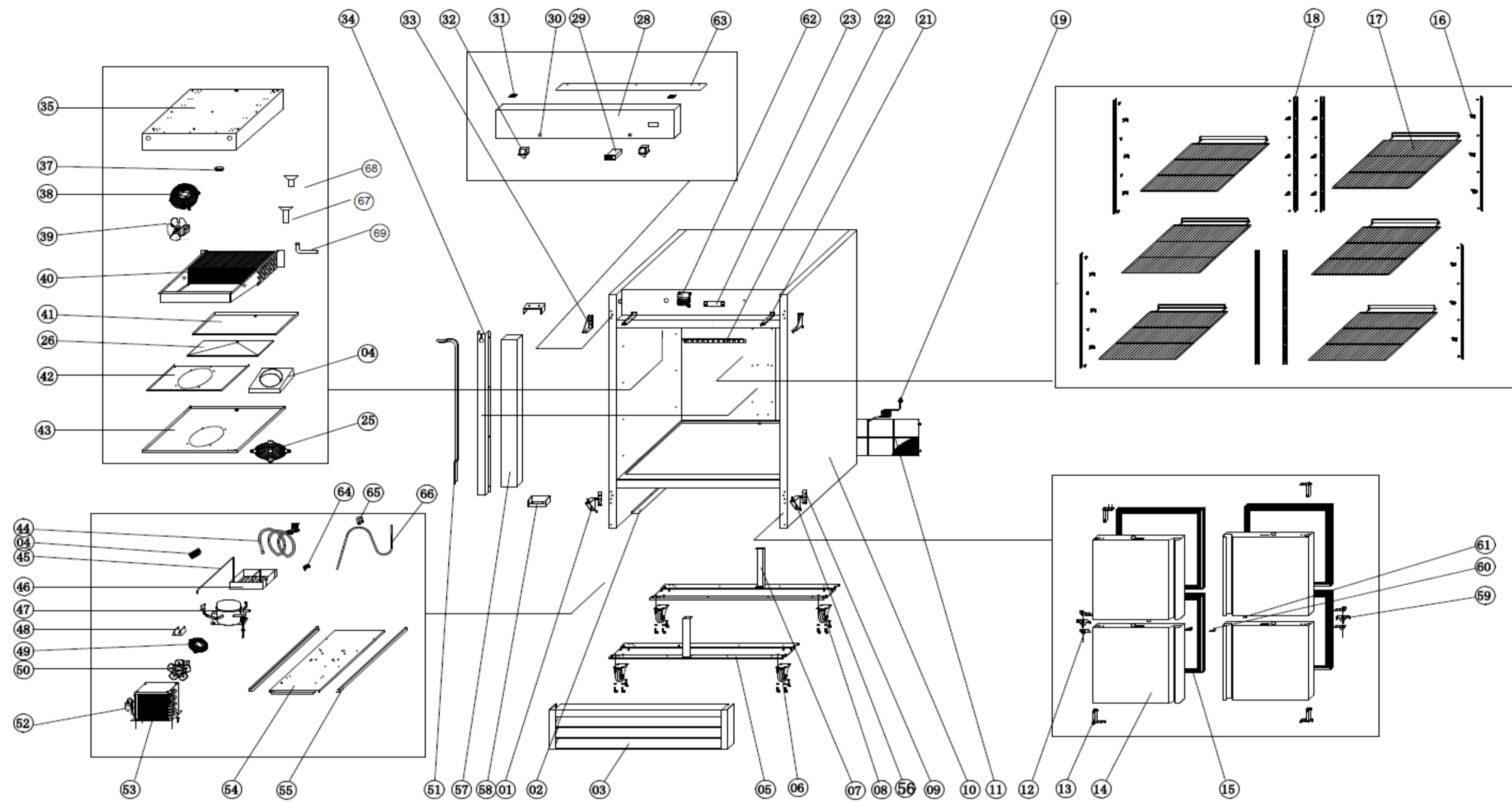


Model: KCHRI54R4HDR
 PNC: 738282
 REV: 4/16/2024

Spare Parts List

| NO | DESCRIPTION | Serial # | QTY | COMPONENT PNC | Model Number | Model PNC |
|-----|---|-----------|-------|---------------|--------------|-----------|
| 1 | Door Hinge /Down Left | ALL | 1PC | 0USDD4 | KCHRI54R4HDR | 738282 |
| 2 | Baffle Plate | ALL | 1PC | 0USL49 | KCHRI54R4HDR | 738282 |
| 3 | Down Panel | ALL | 1PC | 0USF99 | KCHRI54R4HDR | 738282 |
| 4 | Wind Guide Foam | ALL | 1PC | 0USI41 | KCHRI54R4HDR | 738282 |
| 5 | Support Of Unit Board | ALL | 2PCS | 0USJ75 | KCHRI54R4HDR | 738282 |
| 6 | Brake Wheel | ALL | 2PCS | 0USF04 | KCHRI54R4HDR | 738282 |
| 7 | Foundation Plate | ALL | 2PCS | 0USJ76 | KCHRI54R4HDR | 738282 |
| 8 | Normal Wheel | ALL | 2PCS | 0USH64 | KCHRI54R4HDR | 738282 |
| 8a | Castor Mounting Bolt (4-PACK) | ALL | 4PC | 0USC2T | KCHRI54R4HDR | 738282 |
| 8b | Castor Mounting Locking Washer (4-PACK) | ALL | 4PC | 0USC2Z | KCHRI54R4HDR | 738282 |
| 8c | Castor Mounting Flat Washer (4-PACK) | ALL | 4PC | 0USC2Y | KCHRI54R4HDR | 738282 |
| 9 | Washer Of Down Hinge | ALL | 2PCS | 0USI27 | KCHRI54R4HDR | 738282 |
| 10 | Body | ALL | 1PC | N/A | KCHRI54R4HDR | 738282 |
| 11 | Unit Room Cover | ALL | 1PC | 0USI08 | KCHRI54R4HDR | 738282 |
| 11a | LOCATION KNOB | ALL | 2PCS | 0USH46 | KCHRI54R4HDR | 738282 |
| 12 | Down Hinge Axis Jacket | ALL | 4PCS | 0USDCZ | KCHRI54R4HDR | 738282 |
| 13 | Door Spring Hinge | ALL | 4PCS | 0USF84 | KCHRI54R4HDR | 738282 |
| 14 | Door | ALL | 4PCS | 0USDD6 | KCHRI54R4HDR | 738282 |
| 15 | Gasket | ALL | 4PCS | 0USDD5 | KCHRI54R4HDR | 738282 |
| 16 | K Shape Clip | ALL | 24PCS | 0USH19 | KCHRI54R4HDR | 738282 |
| 17 | Shelf | ALL | 6PCS | 0USCOX | KCHRI54R4HDR | 738282 |
| 18 | Shelf Support | ALL | 8PCS | 0USN77 | KCHRI54R4HDR | 738282 |
| 18a | Shelf Support Screw | ALL | 64PCS | 0USM14 | KCHRI54R4HDR | 738282 |
| 19 | Plug | ALL | 1PC | 0USH67 | KCHRI54R4HDR | 738282 |
| 21 | Fixed Clip Of Front Panel | ALL | 2PCS | 0USJ80 | KCHRI54R4HDR | 738282 |
| 22 | Lamp | ALL | 1PC | 0USH23 | KCHRI54R4HDR | 738282 |
| 23 | Led Power Supply | ALL | 1PC | 0USH38 | KCHRI54R4HDR | 738282 |
| 24 | Cable Connector | ALL | 1PC | 0USF09 | KCHRI54R4HDR | 738282 |
| 25 | Fan Grill | ALL | 1PC | 0USDD8 | KCHRI54R4HDR | 738282 |
| 26 | Insulation Board | ALL | 1PC | 0USH20 | KCHRI54R4HDR | 738282 |
| 28 | Front Panel | ALL | 1PC | 0USG83 | KCHRI54R4HDR | 738282 |
| 29 | Thermostat - Full Set | <01021035 | 1PC | 0USDAD | KCHRI54R4HDR | 738282 |
| 29a | Thermostat Contactor | <01021035 | 1PC | 0USH89 | KCHRI54R4HDR | 738282 |
| 29b | Thermostat Display | <01021035 | 1PC | 0USN67 | KCHRI54R4HDR | 738282 |
| 29c | Thermostat components | <01021035 | 1PC | 0USDAA | KCHRI54R4HDR | 738282 |
| 29 | TEMPERATURE CONTROLLER | ≥01021035 | 1PC | 0USDET | KCHRI54R4HDR | 738282 |
| 29a | Inner Chest Temperature Sensor Probe | ALL | 1PC | 0USC4D | KCHRI54R4HDR | 738282 |
| 30 | LOCK (with key) | ALL | 2PCS | 096258 | KCHRI54R4HDR | 738282 |
| 31 | Hinge | ALL | 2PCS | 0USH18 | KCHRI54R4HDR | 738282 |
| 32 | Door Switch | ALL | 2PCS | 0USF86 | KCHRI54R4HDR | 738282 |
| 33 | Door Hinge /Up Left | ALL | 1PC | 0USF71 | KCHRI54R4HDR | 738282 |
| 33a | Door Hinge /Up Right | ALL | 1PC | 0USF72 | KCHRI54R4HDR | 738282 |
| 34 | Suction Pipe Cover | ALL | 1PC | 0USN83 | KCHRI54R4HDR | 738282 |
| 35 | Fixed Board Of Evaporator | <31420037 | 1PC | 0USDEC | KCHRI54R4HDR | 738282 |
| | | ≥31420037 | 1PC | 0USDH1 | KCHRI54R4HDR | 738282 |
| 37 | Sensor Fixed Box | ALL | 1PC | 0USM10 | KCHRI54R4HDR | 738282 |
| 38 | Wall Ring | ALL | 1PC | 0USI24 | KCHRI54R4HDR | 738282 |
| 39 | Circle Fan | ALL | 1PC | 0USF13 | KCHRI54R4HDR | 738282 |
| 39a | EVAPORATOR FAN BLADE | ALL | 1PC | 0USC4K | KCHRI54R4HDR | 738282 |
| 40 | Evaporator | <31420037 | 1PC | 0USG21 | KCHRI54R4HDR | 738282 |
| | | ≥31420037 | 1PC | 0USDJ5 | KCHRI54R4HDR | 738282 |
| 40a | Evaporator Temperature Sensor Probe | ALL | 1PC | 0USC6S | KCHRI54R4HDR | 738282 |
| 41 | Evaporator Water Pan | ALL | 1PC | 0USJ74 | KCHRI54R4HDR | 738282 |
| 42 | Circle Fan Support | ALL | 1PC | 0USF20 | KCHRI54R4HDR | 738282 |
| 43 | Circle Fan Cover | <31420037 | 1PC | 0USK20 | KCHRI54R4HDR | 738282 |

| | | | | | | |
|-----|-------------------------------------|-----------|------|--------|--------------|--------|
| 43 | CIRCUIT BOARD COVER | ≥31420037 | 1PC | 0USDIQ | KCHRI54R4HDR | 738282 |
| 44 | Helix Suction Pipe+Capillary B | ALL | 1PC | 0USH17 | KCHRI54R4HDR | 738282 |
| 45 | Evaporate Pipe | ALL | 1PC | 0USG17 | KCHRI54R4HDR | 738282 |
| 46 | Water Box | ALL | 1PC | 0USI29 | KCHRI54R4HDR | 738282 |
| 47 | Compressor | ALL | 1PC | 0USF28 | KCHRI54R4HDR | 738282 |
| 47a | COMPRESSOR ELECTRICAL COMPONENT SET | ALL | 1PC | 0USDF5 | KCHRI54R4HDR | 738282 |
| 48 | Drier Support | ALL | 1PC | 0USI78 | KCHRI54R4HDR | 738282 |
| 49 | Basket Guard Grills | ALL | 1PC | 0USDIJ | KCHRI54R4HDR | 738282 |
| 50 | Condenser Fan | ALL | 1PC | 0USF41 | KCHRI54R4HDR | 738282 |
| 50a | CONDENSER FAN BLADE | ALL | 1PC | 0USC4J | KCHRI54R4HDR | 738282 |
| 51 | Vertical Suction Pipe+Capillary A | ALL | 1PC | 0USI22 | KCHRI54R4HDR | 738282 |
| 52 | Filter Drier | ALL | 1PC | 0USG66 | KCHRI54R4HDR | 738282 |
| 52a | CAPILLARY | ALL | 1PC | 0USM13 | KCHRI54R4HDR | 738282 |
| 53 | Condenser | ALL | 1PC | 0USF34 | KCHRI54R4HDR | 738282 |
| 54 | Unit Board | ALL | 1PC | 0USJ70 | KCHRI54R4HDR | 738282 |
| 55 | Guide Of Unit Board/Left | ALL | 1PC | 0USJ69 | KCHRI54R4HDR | 738282 |
| 55a | Guide Of Unit Board/Right | ALL | 1PC | 0USN84 | KCHRI54R4HDR | 738282 |
| 56 | Door Hinge /Down Right | ALL | 1PC | 0USDD7 | KCHRI54R4HDR | 738282 |
| 57 | Middle Girder | ALL | 1PC | 0USDD9 | KCHRI54R4HDR | 738282 |
| 58 | Middle Girder Fixer | ALL | 2PCS | 0USH58 | KCHRI54R4HDR | 738282 |
| 59 | Middle Hinge | ALL | 2PCS | 0USDD0 | KCHRI54R4HDR | 738282 |
| 60 | Down Sealing Part Right | ALL | 1PC | 0USDD1 | KCHRI54R4HDR | 738282 |
| 60a | Down Sealing Part Left | ALL | 1PC | 0USDD2 | KCHRI54R4HDR | 738282 |
| 61 | Up Sealing Part | ALL | 2PCS | 0USDD3 | KCHRI54R4HDR | 738282 |
| 62 | Controller Protector box | ALL | 1PC | 0USN72 | KCHRI54R4HDR | 738282 |
| 62a | Controller Protector cover | ALL | 1PC | 0USN73 | KCHRI54R4HDR | 738282 |
| 63 | Top Cover | ALL | 1PC | 0USN89 | KCHRI54R4HDR | 738282 |
| 64 | Drain Fixer | ALL | 1PC | 0USN75 | KCHRI54R4HDR | 738282 |
| 65 | Drain Holder | ALL | 1PC | 0USN86 | KCHRI54R4HDR | 738282 |
| 66 | Drain Pipe | ALL | 1PC | 0USN87 | KCHRI54R4HDR | 738282 |
| 67 | Drain Pipe (A Int) | ALL | 1PC | 096261 | KCHRI54R4HDR | 738282 |
| 68 | DRAIN PIPE(B EXT) | ALL | 1PC | 096263 | KCHRI54R4HDR | 738282 |
| 69 | WATER PIPE | ALL | 1PC | 0USI36 | KCHRI54R4HDR | 738282 |



EXPLODE OF KCHRI54R4HDR