



SpeeDelight Removable Teflon Plate

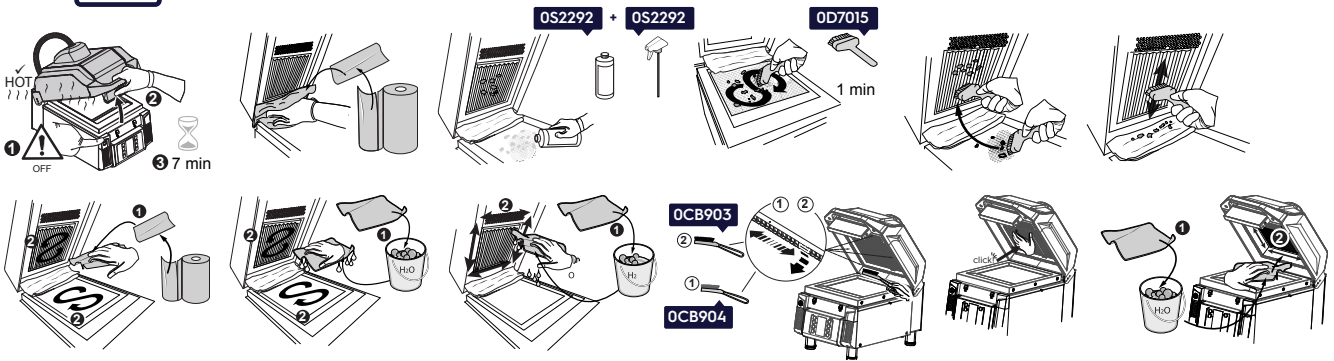
User Maintenance Guide

OPERATIONS

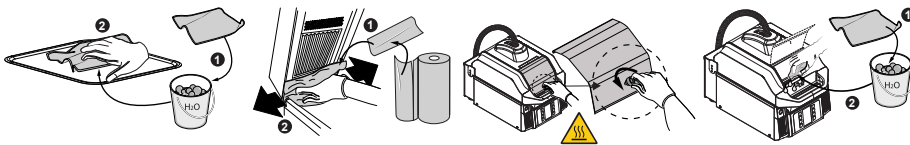
TROUBLESHOOTING

ON-LINE ACCESSORIES

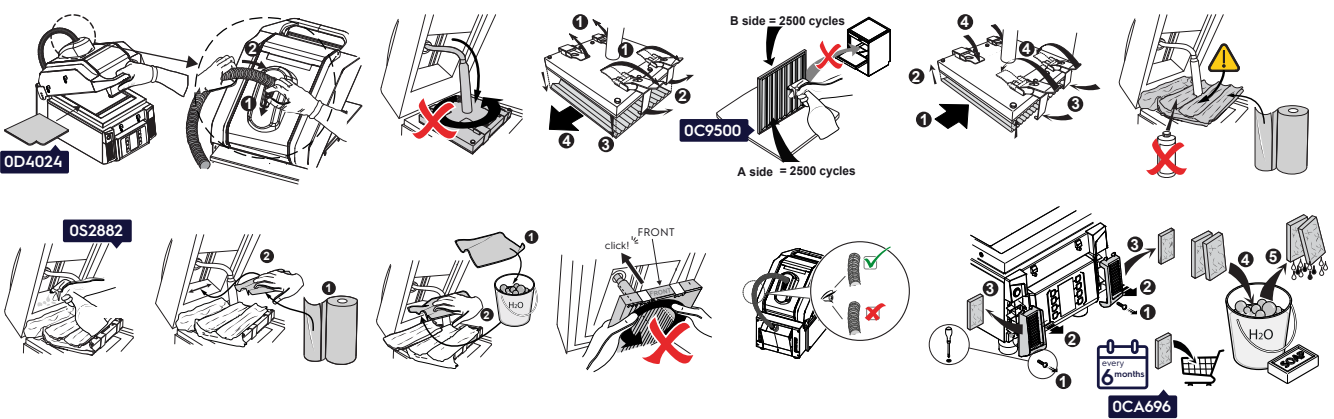
1A **daily** DAILY OPERATIONS INCLUDE **1A** AND **1B**



1B **daily**



2 **1 per week** FOLLOW THIS ORDER FOR WEEKLY OPERATIONS: **1A**, **2** AND **1B**



Cleaning external surfaces



Use Electrolux Professional approved cleaning agents. Damages caused by either lack of cleaning and user maintenance, or by the use of not approved cleaning, rinse and descaling agents, will be excluded by the warranty.

How to clean your SpeeDelight (Video Tutorial)

WWW.YOUTUBE.COM



Scan to have a look and to buy Electrolux Professional accessories

BUY.ELECTROLUXPROFESSIONAL.COM








SpeedDelight Removable Teflon Plate

User Maintenance Guide

OPERATIONS

TROUBLESHOOTING

 ON-LINE ACCESSORIES 

Anomaly / Description	Remedy
Yellow Triangle Icon 	<p>When the display shows the yellow triangle icon switch the appliance OFF and ON. If the same icon shows up again on the display press simultaneously the buttons "1" and "2" for 4 seconds until an error code appears on the display. Inform the Service about the indicated error.</p> <p>INFO: Pressing simultaneously the buttons "1" and "2" activates the alarm LOG on the display. Alarm events are recorded with date and time. Press the arrows buttons to scroll all the alarms. Once selected the required event, press  button to display more information about the occurring problem.</p> 
Red Triangle Icon 	<p>When the appliance is used for too long it may overheat. In this case the display shows a red triangle icon. Wait for the appliance to cool down. In some cases after cooling the display shows the text "Restart". Switch OFF and then ON the appliance.</p> 
The sandwich is not enough or too much cooked	Select another program.
1. The sandwich core temperature is too cold 2. The sandwich core temperature is too hot	1. Increase the time of microwave. If the time of microwave is more than the total time, remember to increase also the total time. 2. Decrease the time of microwaves.
1. The top of the sandwich is burned 2. The top of the sandwich is not enough cooked	1. Decrease the upper heating plate temperature and (or) decrease the total time. Make sure the RTP/Baking Paper is clean and there are no burnt residues and there is no dirt between the upper heating plate and the RTP/Baking Paper. 2. Increase the upper heating plate temperature and (or) increase the total time. Check if the upper plate can move freely (see a few lines below). NOTE: The temperature of the upper heating plate is the same for all the programs.
1. The bottom of the sandwich is burned 2. The bottom of the sandwich is not enough cooked	1. Decrease the bottom glass temperature and (or) decrease the total time. 2. Increase the bottom glass temperature and (or) increase the total time. NOTE: The temperature of the glass is the same for all the programs.
The sandwich is squashed	Carefully try to unlock the tube. WARNING: Risk of burning - cool the machine or use gloves against the heat. Lubricate unlocking mechanism and tube.
The sandwich is squashed	Clean any debris preventing the lid to close. Move lid up/down. Check if motion is straight or not.
The lid does not open completely	Remove dirt/debris from the lid hinging area and tilt the lid up and down.
The upper plate does not move up/down	Carefully try to unlock the tube. WARNING: Risk of burning - cool the machine or use gloves against the heat. Lubricate unlocking mechanism and tube.
The lid conduit is too rigid or damaged	Free the upper plate and turn until the conduit returns to its original flexibility. If the conduit is damaged, stop operating and call Service.
Stains can be seen under the cooking surface	Clean the cooking surface more frequently. Do not use sharp tools removing the debris/dirt from the sealing. Call Service if stains increase.
Glass shows fractures or cracked	Stop operating with the machine: disconnect it and call Service.
Sparks noise comes from the appliance while cooking	Reduce MW time or increase the food load accordingly. Thoroughly clean the machine.
Smell of burnt	Thoroughly clean the appliance and increase the cleaning frequency. If the smell persists, call Service.

For other anomalies

For other anomalies being not reported in the table, first try to switch the machine OFF and ON and check more possible actions in the user manual: if the anomaly persists, clean the machine and call Service